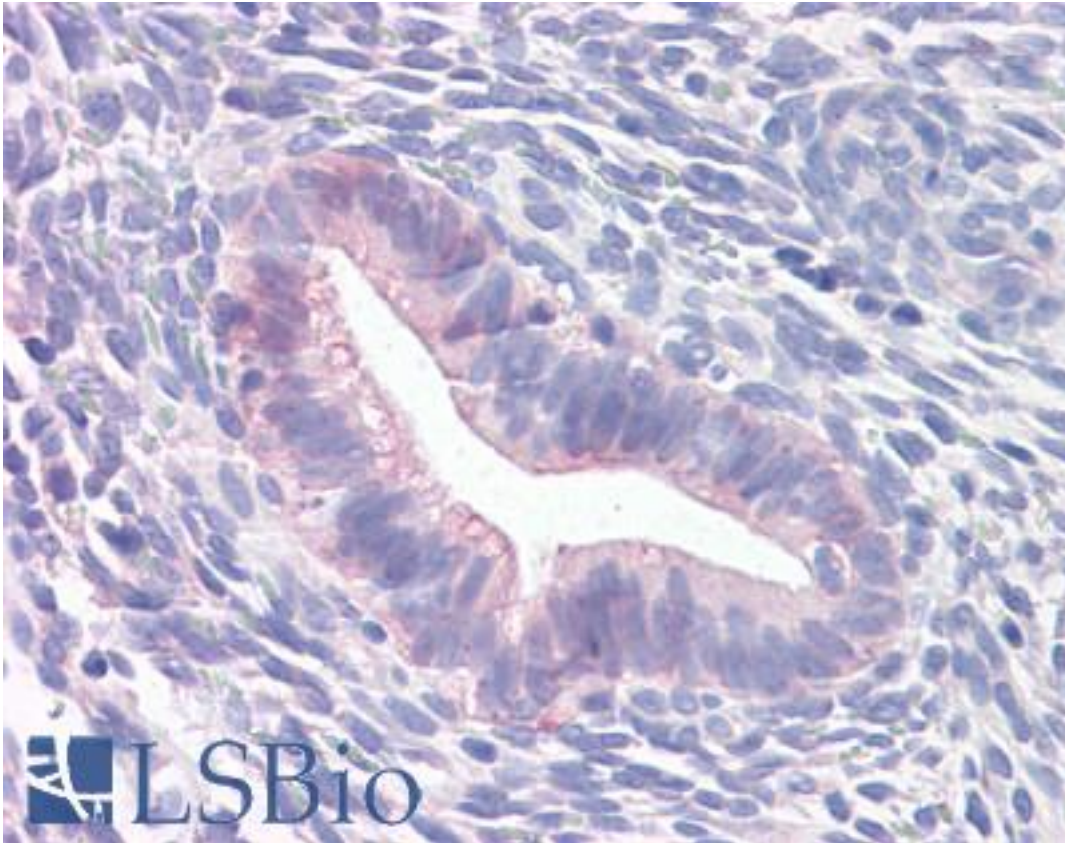


**Prominin 2 / PROM2 Rabbit anti-Human Polyclonal (Internal) Antibody - LS-A9230 - LSBio**

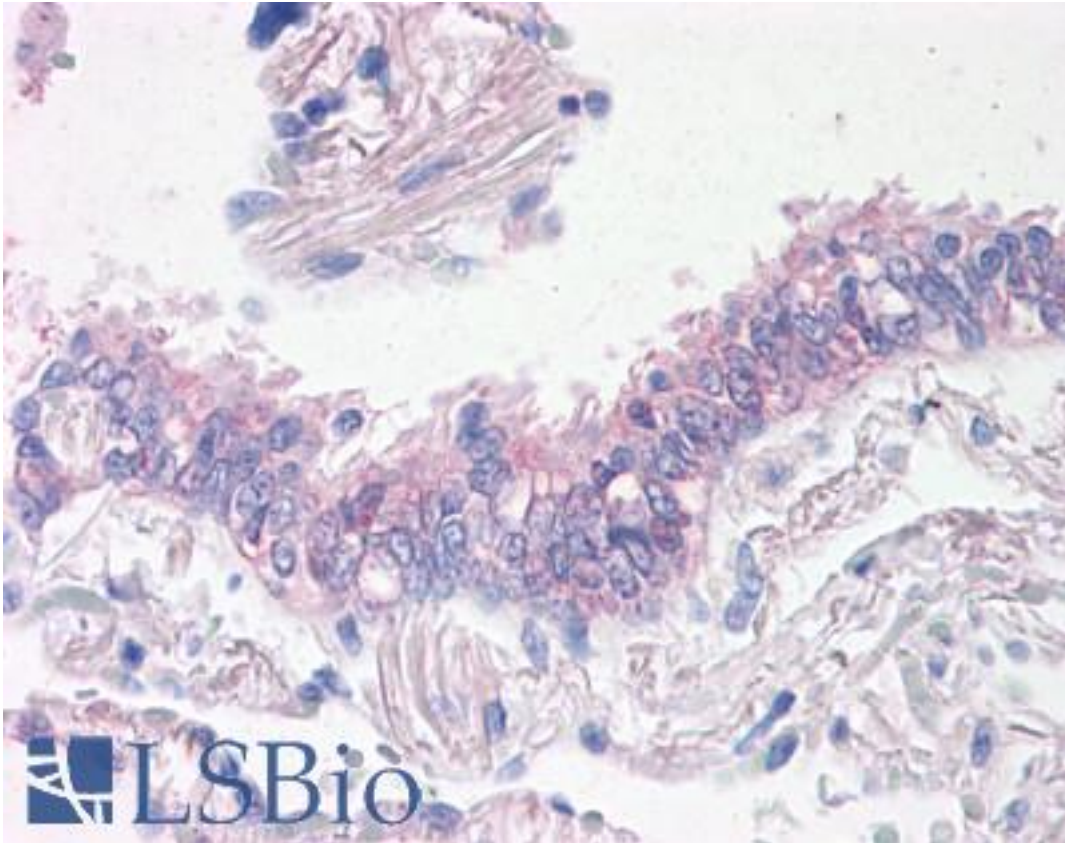
<b>CatalogID:</b>	LS-A9230
<b>Target:</b>	prominin 2 (PROM2)
<b>Synonyms:</b>	PROM2 Antibody, HPROML2 Antibody, PROML2 Antibody, Prominin-like protein 2 Antibody, Prominin-related protein Antibody, PROM-2 Antibody, Prominin 2 Antibody, Prominin-2 Antibody
<b>Host</b>	PROM2 antibody was produced in Rabbit
<b>Clonality:</b>	Polyclonal
<b>Immunogen Species:</b>	Prominin 2 / PROM2 antibody was raised against Human
<b>Antigen Type:</b>	Synthetic peptide
<b>Immunogen:</b>	Prominin 2 / PROM2 antibody was raised against synthetic 16 amino acid peptide from internal region of human PROM2. Percent identity with other species by BLAST analysis: Human (100%); Gorilla, Monkey, Marmoset, Bovine (94%); Pig (88%); Hamster, Horse (81%).
<b>Specificity:</b>	Human PROM2. BLAST analysis of the peptide immunogen showed no homology with other human proteins.
<b>Epitope:</b>	Internal
<b>Reactivity:</b>	Human
<b>Predicted Reactivity:</b>	Gorilla, Monkey, Bovine
<b>Purification:</b>	Immunoaffinity purified
<b>Presentation:</b>	PBS, 0.1% sodium azide.
<b>Recommended Storage:</b>	Short term 4°C, long term aliquot and store at -20°C, avoid freeze thaw cycles.
<b>Uses:</b>	IHC - Paraffin (15 - 20 µg/ml) (Optimal dilution to be determined by the researcher)
<b>Size:</b>	50 µg
<b>Concentration:</b>	1 mg/ml

**Immunohistochemistry Image:**



Anti-PROM2 antibody LS-A9230 IHC of human uterus. Immunohistochemistry of formalin-fixed, paraffin-embedded tissue after heat-induced antigen retrieval.

**Immunohistochemistry Image:**



Anti-PROM2 antibody LS-A9230 IHC of human lung, respiratory epithelium.  
Immunohistochemistry of formalin-fixed, paraffin-embedded tissue after heat-induced antigen retrieval.

**Requested From:**

Japan

Laboratory Reagent For In Vitro Research Use Only

Not for resale without prior written consent from LifeSpan BioSciences, Inc.

Created on 9/23/2014

© 2014 LifeSpan BioSciences