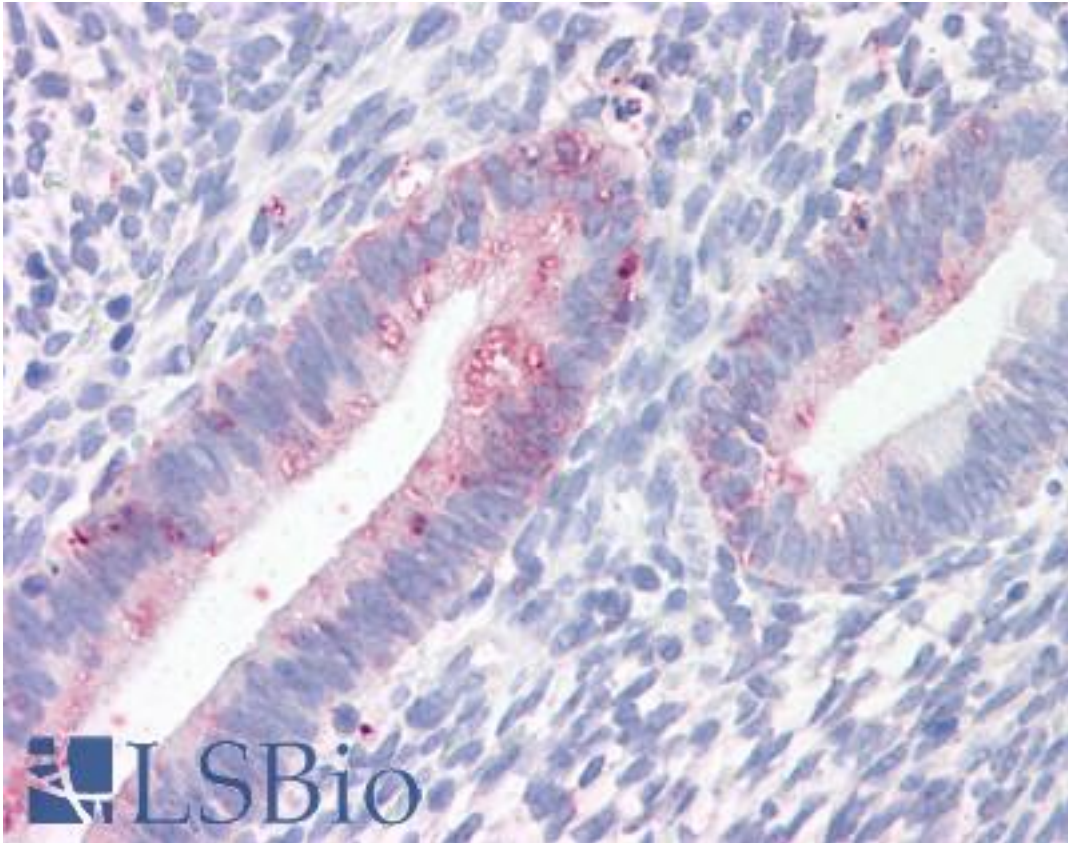


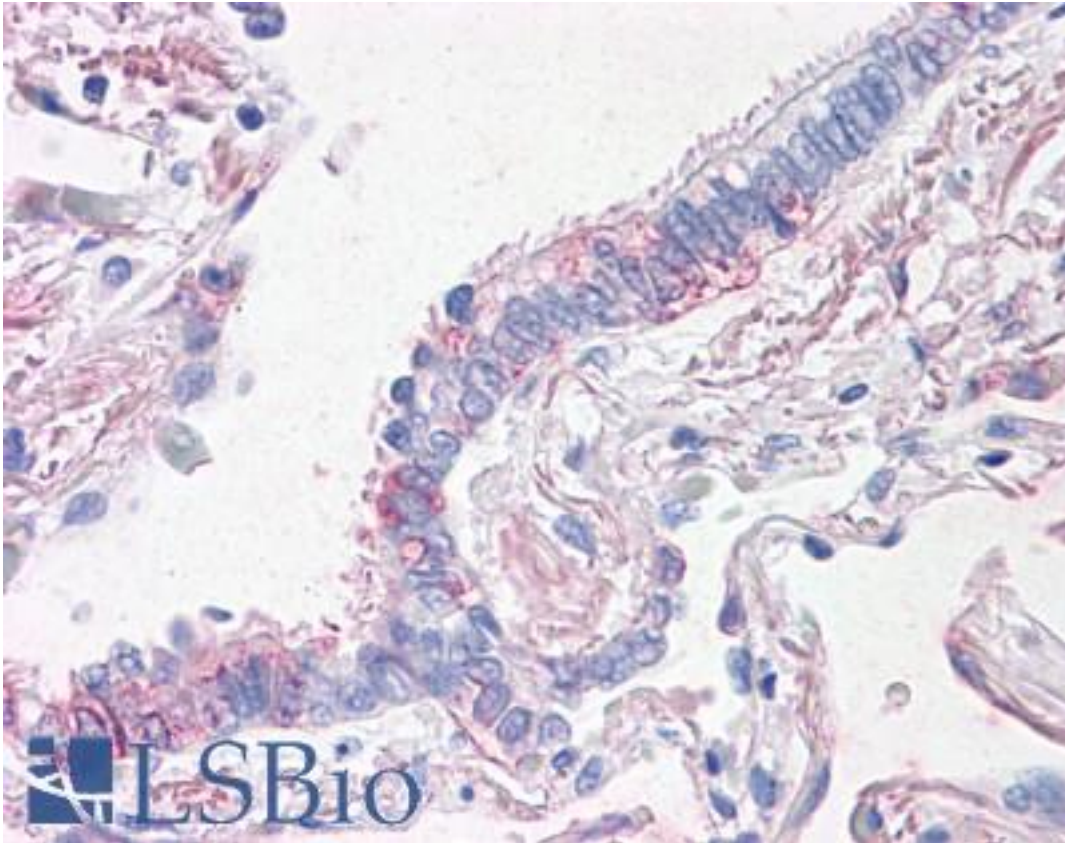
Prominin 2 / PROM2 Rabbit anti-Human Polyclonal (N-Terminus) Antibody - LS-A9227 - LSBio	
CatalogID:	LS-A9227
Target:	prominin 2 (PROM2)
Synonyms:	PROM2 Antibody, HPROML2 Antibody, PROML2 Antibody, Prominin-like protein 2 Antibody, Prominin-related protein Antibody, PROM-2 Antibody, Prominin 2 Antibody, Prominin-2 Antibody
Host	PROM2 antibody was produced in Rabbit
Clonality:	Polyclonal
Immunogen Species:	Prominin 2 / PROM2 antibody was raised against Human
Antigen Type:	Synthetic peptide
Immunogen:	Prominin 2 / PROM2 antibody was raised against synthetic 16 amino acid peptide from N-terminus of human PROM2. Percent identity with other species by BLAST analysis: Human, Gorilla, Monkey, Marmoset (100%); Bovine, Horse (94%); Gibbon, Bat, Rabbit (88%); Hamster, Elephant (81%).
Specificity:	Human PROM2. BLAST analysis of the peptide immunogen showed no homology with other human proteins.
Epitope:	N-Terminus
Reactivity:	Human, Gorilla, Monkey
Predicted Reactivity:	Bovine, Horse
Purification:	Immunoaffinity purified
Presentation:	PBS, 0.1% sodium azide.
Recommended Storage:	Short term 4°C, long term aliquot and store at -20°C, avoid freeze thaw cycles.
Uses:	IHC - Paraffin (15 - 20 µg/ml) (Optimal dilution to be determined by the researcher)
Size:	50 µg
Concentration:	0.5 mg/ml

Immunohistochemistry Image:



Anti-PROM2 antibody LS-A9227 IHC of human uterus. Immunohistochemistry of formalin-fixed, paraffin-embedded tissue after heat-induced antigen retrieval.

Immunohistochemistry Image:



Anti-PROM2 antibody LS-A9227 IHC of human lung, respiratory epithelium.
Immunohistochemistry of formalin-fixed, paraffin-embedded tissue after heat-induced antigen retrieval.

Requested From:

Japan

Laboratory Reagent For In Vitro Research Use Only

Not for resale without prior written consent from LifeSpan BioSciences, Inc.

Created on 9/23/2014

© 2014 LifeSpan BioSciences