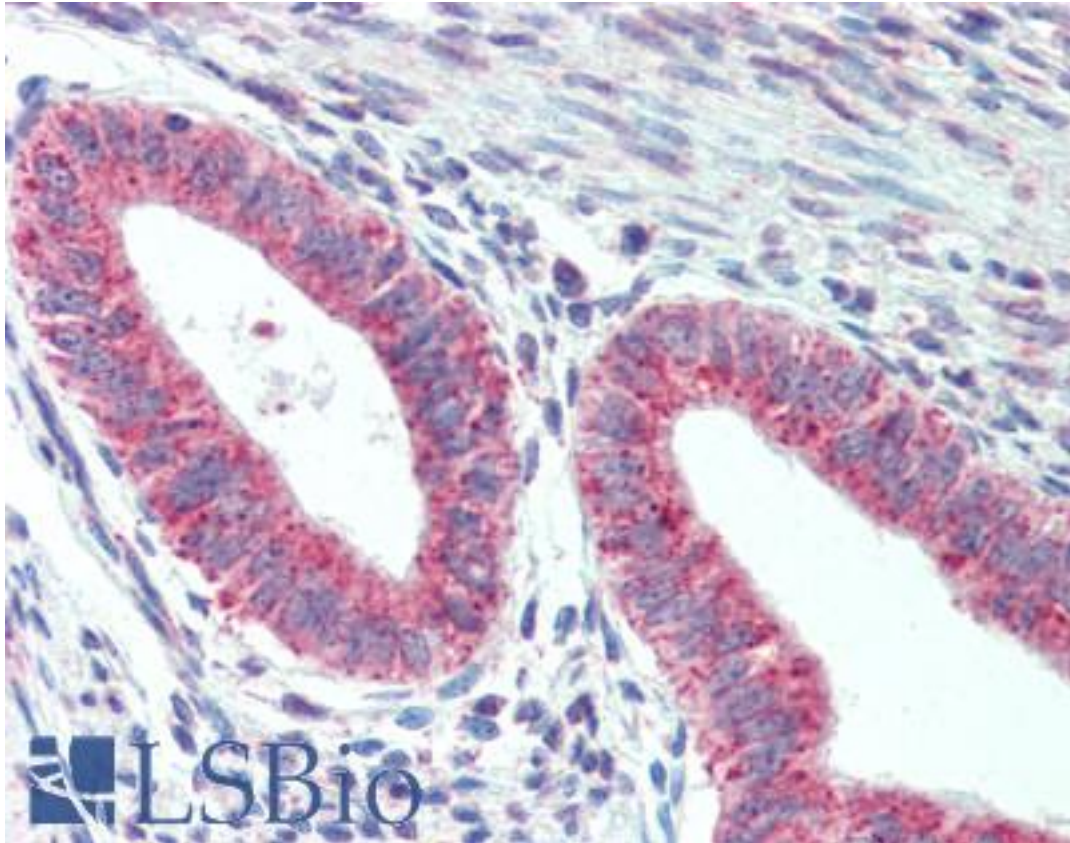


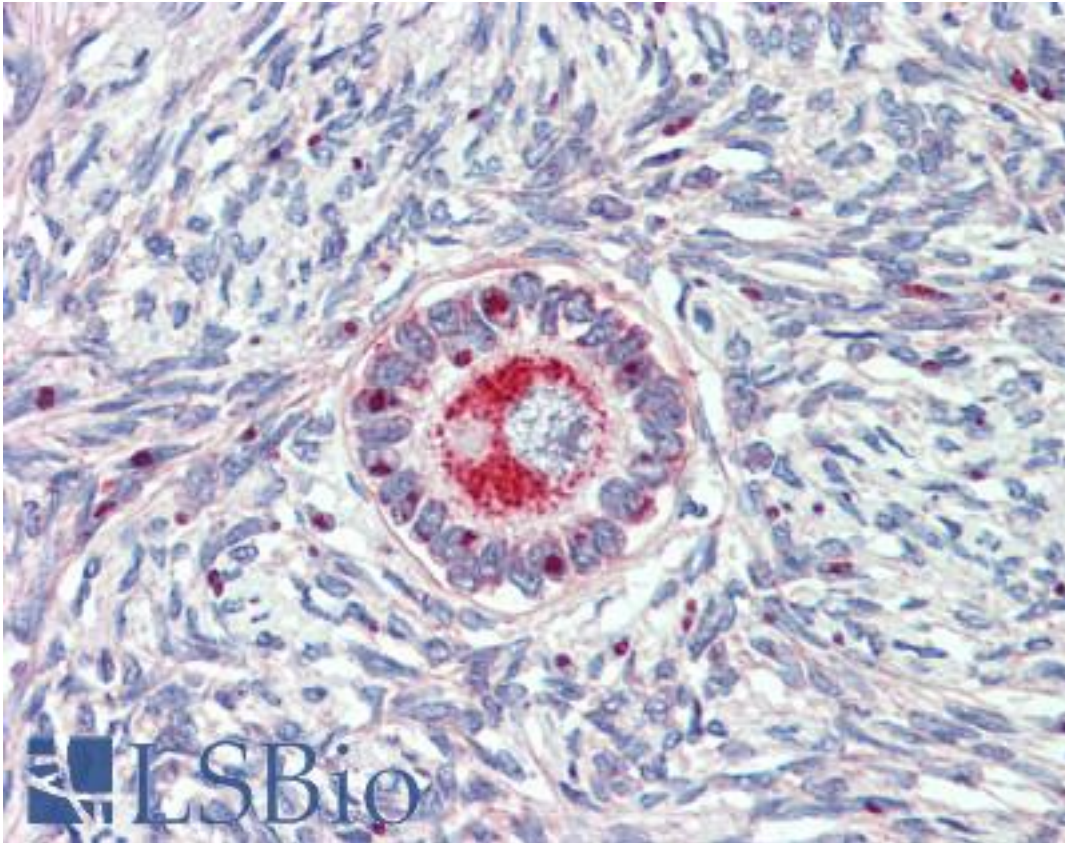
TM9SF1 Rabbit anti-Human Polyclonal (Internal) Antibody - LS-A9225 - LSBio	
CatalogID:	LS-A9225
Target:	transmembrane 9 superfamily member 1 (TM9SF1)
Synonyms:	TM9SF1 Antibody, HMP70 Antibody, MP70 protein family member Antibody, MP70 Antibody
Host	TM9SF1 antibody was produced in Rabbit
Clonality:	Polyclonal
Immunogen Species:	TM9SF1 antibody was raised against Human
Antigen Type:	Synthetic peptide
Immunogen:	TM9SF1 antibody was raised against synthetic 18 amino acid peptide from internal region of human TM9SF1. Percent identity with other species by BLAST analysis: Human, Chimpanzee, Gorilla, Orangutan, Gibbon, Monkey, Marmoset, Panda, Bovine, Horse, Pig (100%); Mouse, Rat, Hamster, Guinea pig (94%); Elephant (89%); Opossum (83%).
Specificity:	Human TM9SF1. BLAST analysis of the peptide immunogen showed no homology with other human proteins.
Epitope:	Internal
Reactivity:	Human, Chimpanzee, Gorilla, Orangutan, Gibbon, Monkey, Bovine, Horse, Pig
Predicted Reactivity:	Mouse, Rat, Guinea pig, Hamster
Purification:	Immunoaffinity purified
Presentation:	PBS, 0.1% sodium azide.
Recommended Storage:	Long term: -70°C; Short term: +4°C
Usage Summary:	Immunohistochemistry: LS-A9225 was validated for use in immunohistochemistry on a panel of 21 formalin-fixed, paraffin-embedded (FFPE) human tissues after heat induced antigen retrieval in pH 6.0 citrate buffer. After incubation with the primary antibody, slides were incubated with biotinylated secondary antibody, followed by alkaline phosphatase-streptavidin and chromogen. The stained slides were evaluated by a pathologist to confirm staining specificity. The optimal working concentration for LS-A9225 was determined to be 10 ug/ml.
Uses:	IHC - Paraffin (10 µg/ml) (Optimal dilution to be determined by the researcher)
Size:	50 µg
Concentration:	1 mg/ml

Immunohistochemistry Image:



Anti-TM9SF1 antibody LS-A9225 IHC of human uterus. Immunohistochemistry of formalin-fixed, paraffin-embedded tissue after heat-induced antigen retrieval.

Immunohistochemistry Image:



Anti-TM9SF1 antibody LS-A9225 IHC of human ovary. Immunohistochemistry of formalin-fixed, paraffin-embedded tissue after heat-induced antigen retrieval.

Requested From:

Japan

Laboratory Reagent For In Vitro Research Use Only

Not for resale without prior written consent from LifeSpan BioSciences, Inc.

Created on 9/23/2014

© 2014 LifeSpan BioSciences