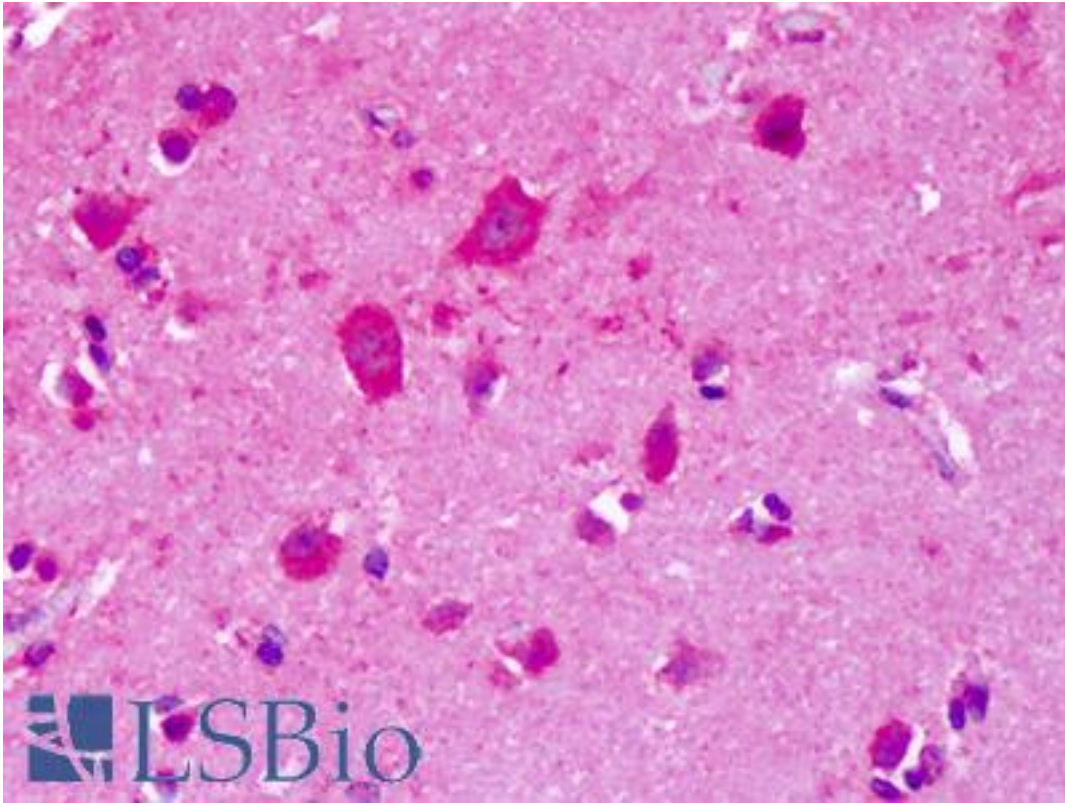


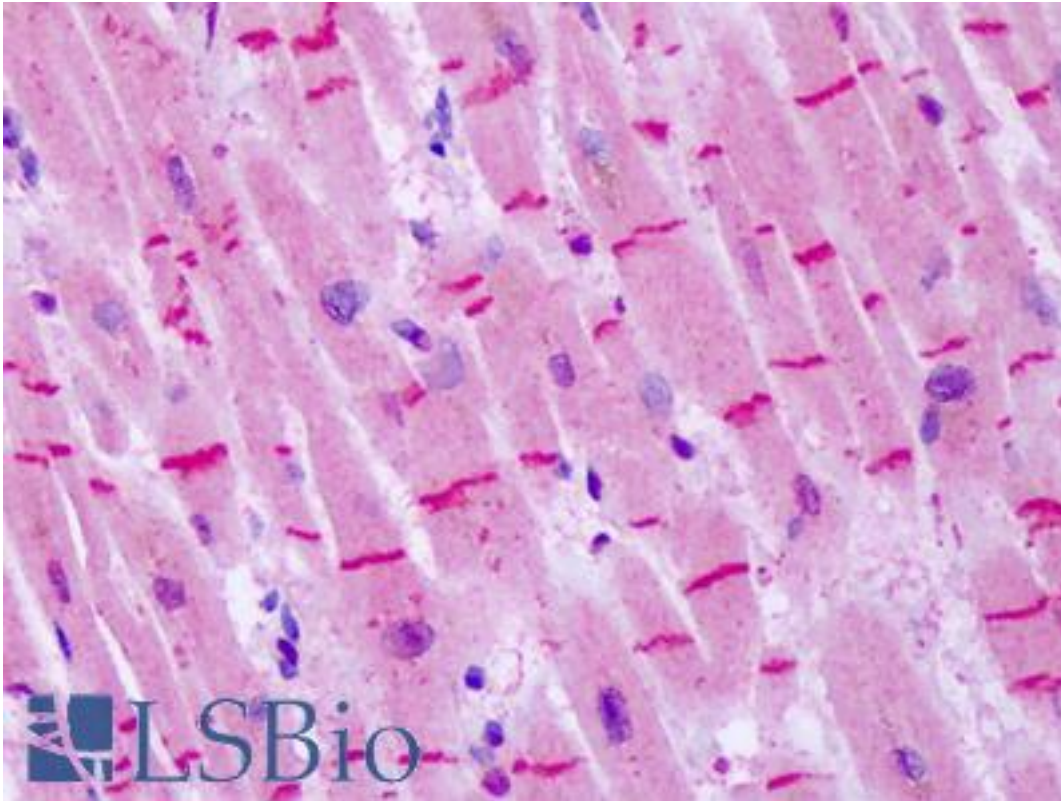
GRM8 / MGLUR8 Rabbit anti-Human Polyclonal (N-Terminus) Antibody - LS-A922 - LSBio	
CatalogID:	LS-A922
Target:	glutamate receptor, metabotropic 8 (GRM8)
Synonyms:	GRM8 Antibody, GLUR8 Antibody, GPRC1H Antibody, MGlu8 Antibody, MGLUR8 Antibody
Family / Subfamily:	GPCR / Metabotropic glutamate
Host	GRM8 antibody was produced in Rabbit
Clonality:	Polyclonal
Immunogen Species:	GRM8 / MGLUR8 antibody was raised against Human
Antigen Type:	Synthetic peptide
Immunogen:	GRM8 / MGLUR8 antibody was raised against synthetic 16 amino acid peptide from N-terminal extracellular domain of human GRM8 / MGLUR8. Percent identity with other species by BLAST analysis: Human, Chimpanzee, Baboon, Monkey, Galago, Marmoset, Mouse, Rat, Shrew, Sheep, Hamster, Panda, Dog, Bat, Rabbit, Horse, Opossum, Chicken, Armadillo, Platypus (100%); Pufferfish (94%); Zebrafish (81%).
Specificity:	Human GRM8 / MGLUR8. BLAST analysis of the peptide immunogen showed no homology with other human proteins, except GRM7 (56%).
Epitope:	N-Terminus
Reactivity:	Human, Chimpanzee, Monkey, Mouse, Rat, Bat, Dog, Hamster, Horse, Rabbit, Sheep, Chicken
Purification:	Immunoaffinity purified
Presentation:	PBS, 0.1% sodium azide.
Recommended Storage:	Long term: -70°C; Short term: +4°C
Uses:	IHC - Paraffin (6 µg/ml), ICC (Optimal dilution to be determined by the researcher)
Size:	50 µg
Concentration:	1 mg/ml

Immunohistochemistry Image:



Anti-GRM8 / MGLUR8 antibody IHC of human brain, cortex. Immunohistochemistry of formalin-fixed, paraffin-embedded tissue after heat-induced antigen retrieval. Antibody LS-A922 dilution 6 ug/ml.

Immunohistochemistry Image:



Anti-GRM8 / MGLUR8 antibody IHC of human heart. Immunohistochemistry of formalin-fixed, paraffin-embedded tissue after heat-induced antigen retrieval. Antibody LS-A922 dilution 6 ug/ml.

Requested From:

Japan

Laboratory Reagent For In Vitro Research Use Only

Not for resale without prior written consent from LifeSpan BioSciences, Inc.

Created on 9/23/2014

© 2014 LifeSpan BioSciences