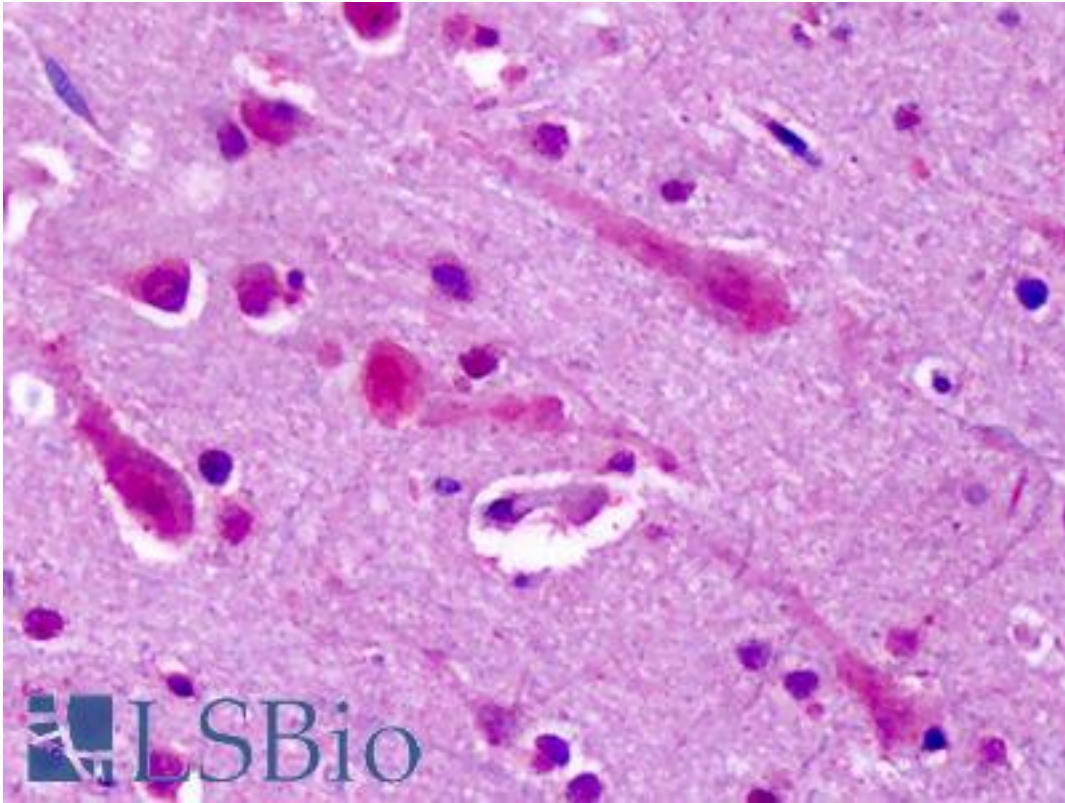


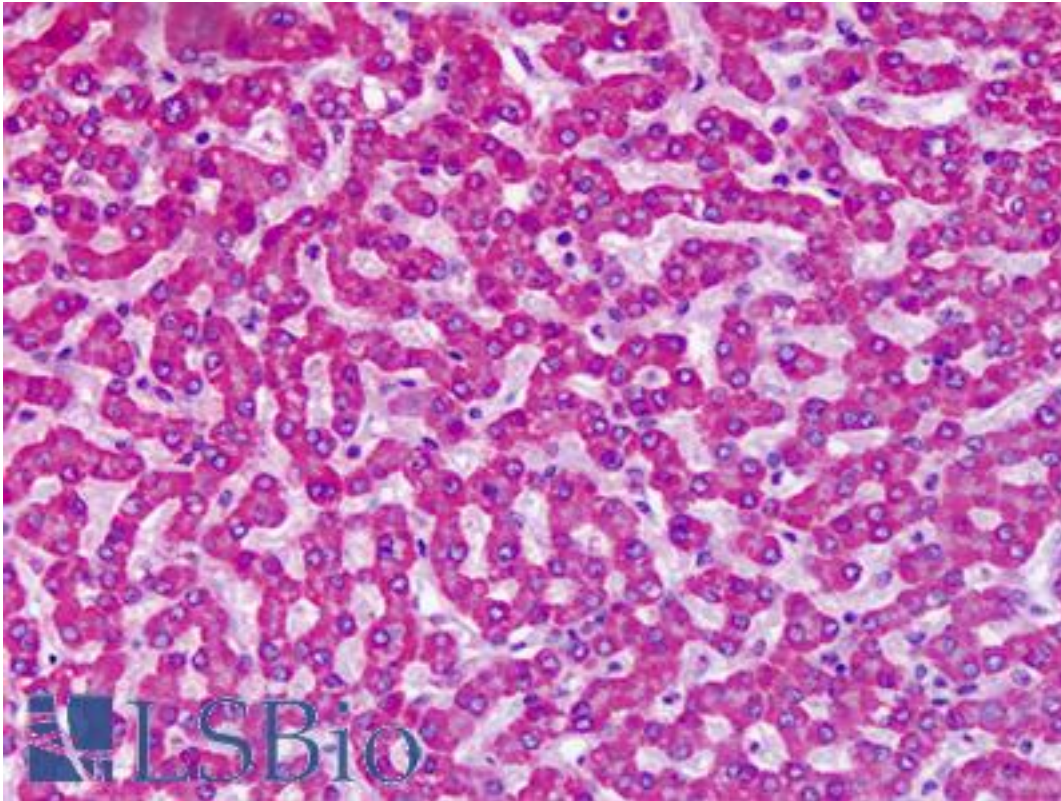
GRM7 / MGLUR7 Rabbit anti-Human Polyclonal (N-Terminus) Antibody - LS-A918 - LSBio	
CatalogID:	LS-A918
Target:	glutamate receptor, metabotropic 7 (GRM7)
Synonyms:	GRM7 Antibody, GLUR7 Antibody, MGLU7 Antibody, MGLUR7 Antibody, GPRC1G Antibody
Family / Subfamily:	GPCR / Metabotropic glutamate
Host	GRM7 antibody was produced in Rabbit
Clonality:	Polyclonal
Immunogen Species:	GRM7 / MGLUR7 antibody was raised against Human
Antigen Type:	Synthetic peptide
Immunogen:	GRM7 / MGLUR7 antibody was raised against synthetic 16 amino acid peptide from N-terminal extracellular domain of human GRM7 / MGLUR7. Percent identity with other species by BLAST analysis: Human, Chimpanzee, Gorilla, Orangutan, Gibbon, Monkey, Marmoset, Mouse, Rat, Bovine, Dog, Horse, Rabbit, Opossum, Turkey, Chicken (100%).
Specificity:	Human GRM7 / MGLUR7. BLAST analysis of the peptide immunogen showed no homology with other human proteins, except GRM4 (50%).
Epitope:	N-Terminus
Reactivity:	Human, Chimpanzee, Gorilla, Orangutan, Gibbon, Monkey, Mouse, Rat, Bovine, Dog, Horse, Rabbit, Chicken
Purification:	Immunoaffinity purified
Presentation:	PBS, 0.1% sodium azide.
Recommended Storage:	Long term: -70°C; Short term: +4°C
Uses:	IHC - Paraffin (4 - 6 µg/ml) (Optimal dilution to be determined by the researcher)
Size:	50 µg
Concentration:	1 mg/ml

Immunohistochemistry Image:



Anti-GRM7 / MGLUR7 antibody IHC of human brain, cortex. Immunohistochemistry of formalin-fixed, paraffin-embedded tissue after heat-induced antigen retrieval. Antibody LS-A918 dilution 4-6 ug/ml.

Immunohistochemistry Image:



Anti-GRM7 / MGLUR7 antibody IHC of human liver. Immunohistochemistry of formalin-fixed, paraffin-embedded tissue after heat-induced antigen retrieval. Antibody LS-A918 dilution 4-6 ug/ml.

Requested From:

Japan

Laboratory Reagent For In Vitro Research Use Only

Not for resale without prior written consent from LifeSpan BioSciences, Inc.

Created on 9/23/2014

© 2014 LifeSpan BioSciences