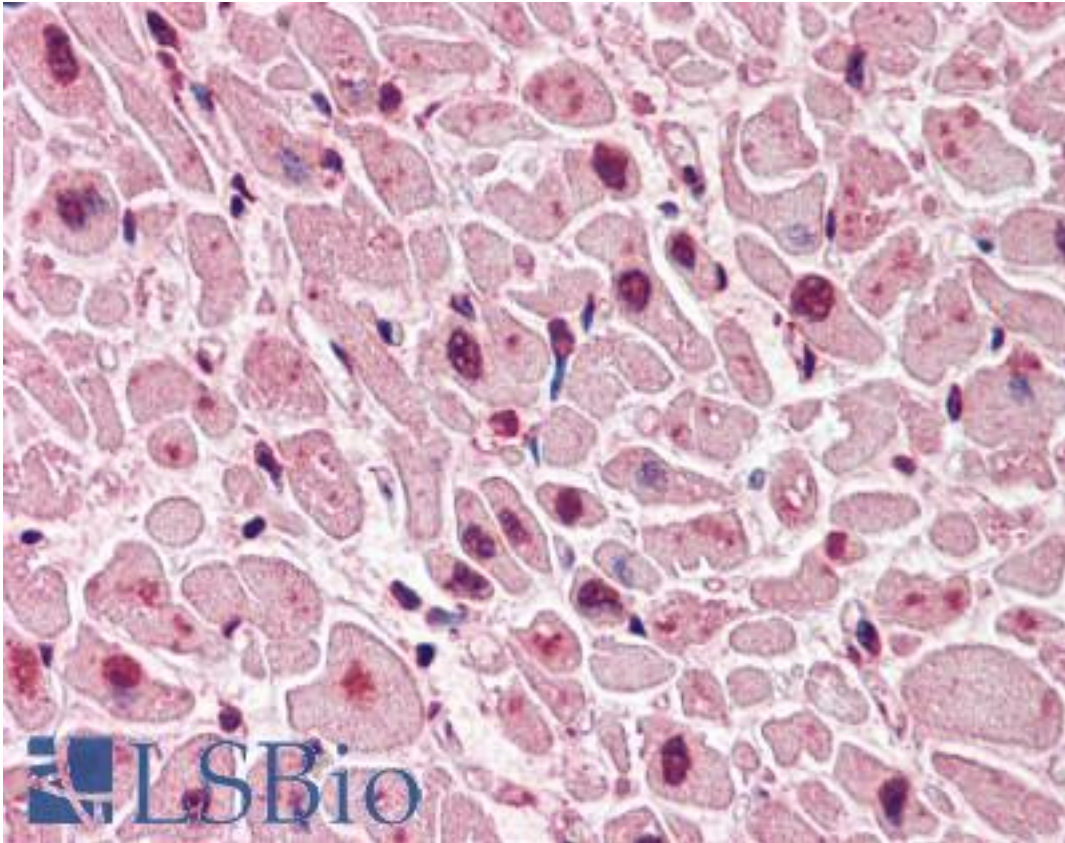


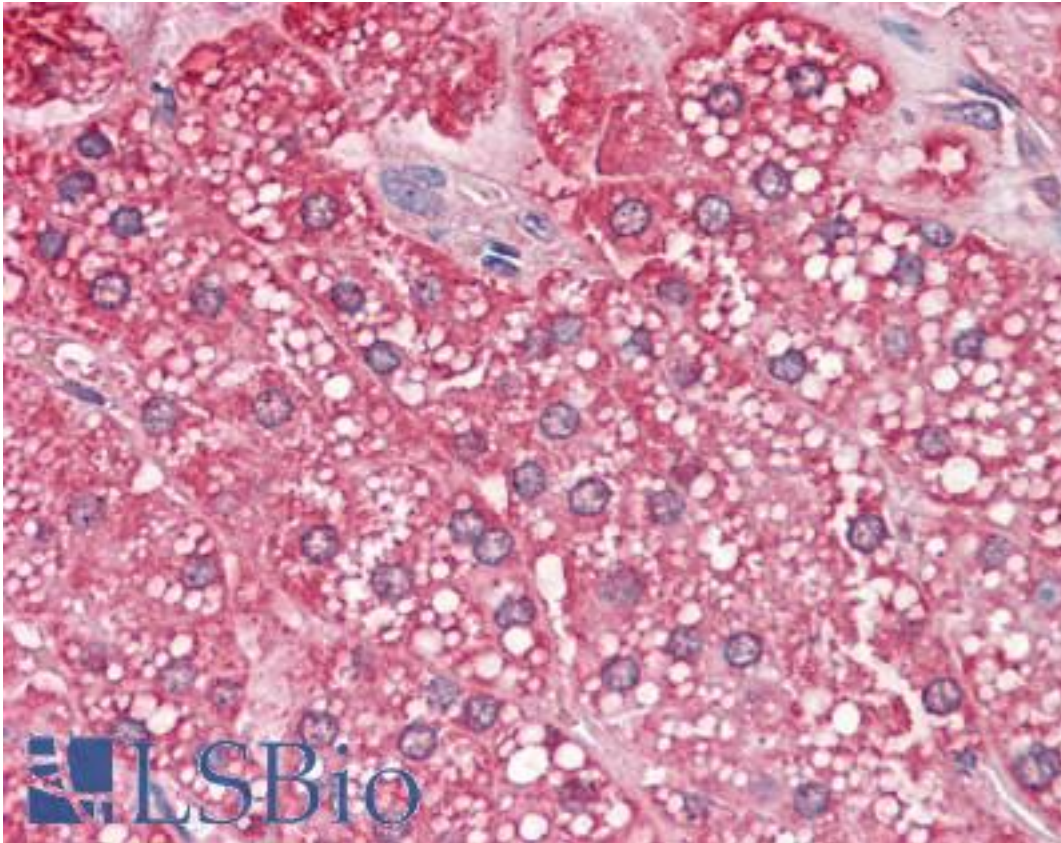
QSOX2 Rabbit anti-Human Polyclonal (Internal) Antibody - LS-A9142 - LSBio	
CatalogID:	LS-A9142
Target:	Quiescin Q6 Sulfhydryl Oxidase 2 (QSOX2)
Synonyms:	QSOX2 Antibody, Quiescin Q6-like protein 1 Antibody, SOXN Antibody, Sulfhydryl oxidase 2 Antibody, QSCN6L1 Antibody, Quiescin Q6-like 1 Antibody
Host	QSOX2 antibody was produced in Rabbit
Clonality:	Polyclonal
Immunogen Species:	QSOX2 antibody was raised against Human
Antigen Type:	Synthetic peptide
Immunogen:	QSOX2 antibody was raised against synthetic 20 amino acid peptide from internal region of human QSOX2. Percent identity with other species by BLAST analysis: Human, Gorilla, Gibbon, Monkey, Mouse, Bat, Horse (100%); Rat, Bovine (95%); Dog, Hamster (90%); Panda, Opossum (85%); Turkey, Chicken (80%).
Specificity:	Human QSOX2. BLAST analysis of the peptide immunogen showed no homology with other human proteins.
Epitope:	Internal
Reactivity:	Human, Gorilla, Gibbon, Monkey, Mouse, Bat, Horse
Predicted Reactivity:	Rat, Bovine, Dog, Hamster
Purification:	Immunoaffinity purified
Presentation:	PBS, 0.1% sodium azide.
Recommended Storage:	Long term: -70°C; Short term: +4°C
Uses:	IHC - Paraffin (20 µg/ml) (Optimal dilution to be determined by the researcher)
Size:	50 µg
Concentration:	1 mg/ml

Immunohistochemistry Image:



Anti-QSOX2 antibody LS-A9142 IHC of human heart. Immunohistochemistry of formalin-fixed, paraffin-embedded tissue after heat-induced antigen retrieval.

Immunohistochemistry Image:



Anti-QSOX2 antibody LS-A9142 IHC of human adrenal. Immunohistochemistry of formalin-fixed, paraffin-embedded tissue after heat-induced antigen retrieval.

Requested From:

Japan

Laboratory Reagent For In Vitro Research Use Only

Not for resale without prior written consent from LifeSpan BioSciences, Inc.

Created on 9/23/2014

© 2014 LifeSpan BioSciences