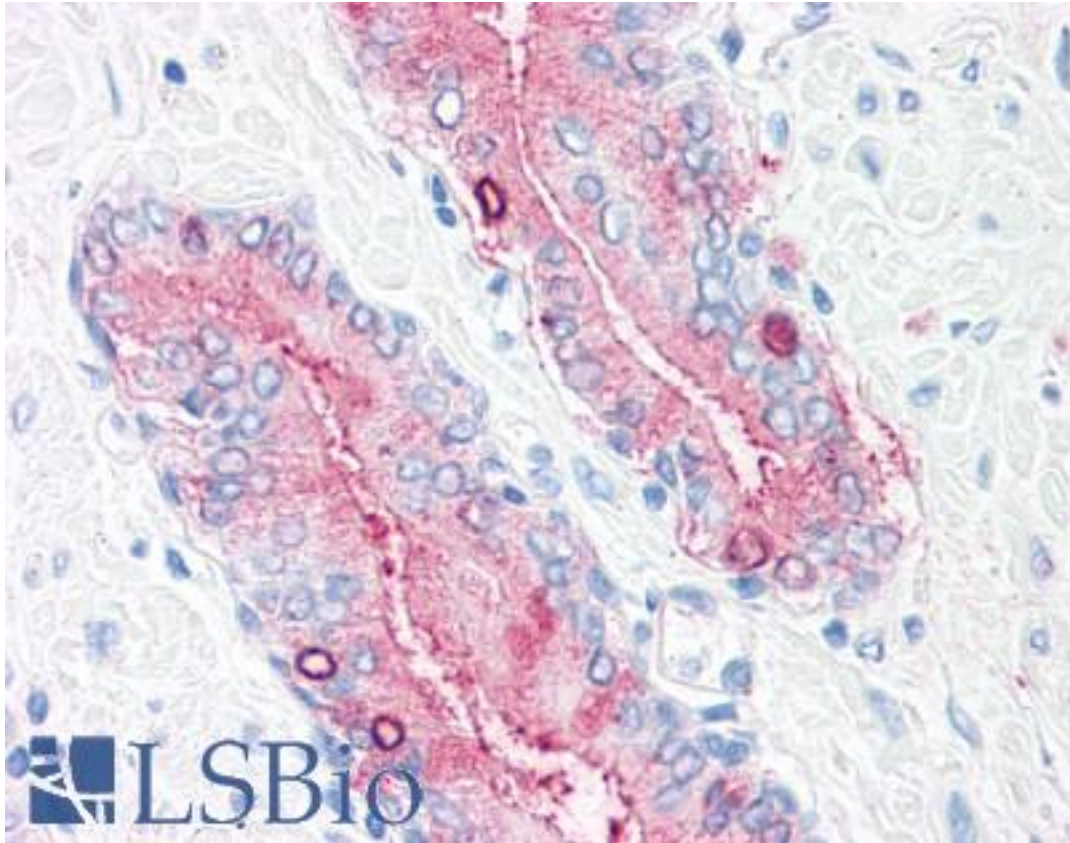


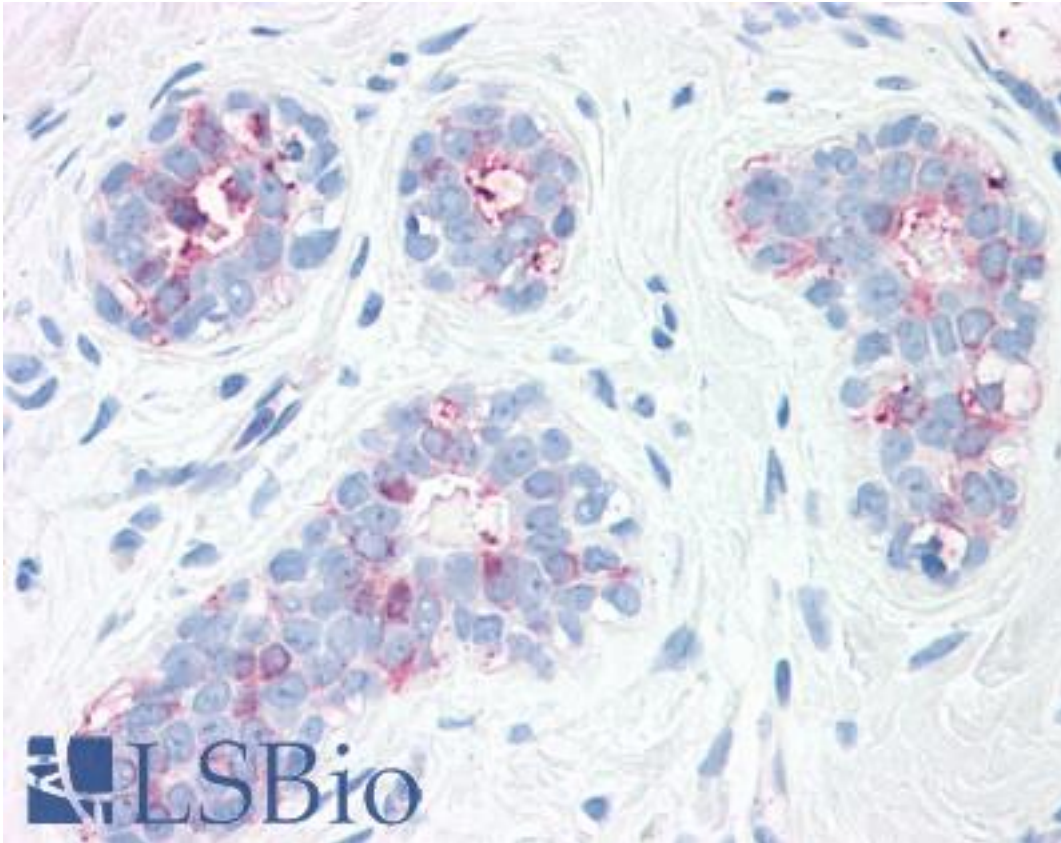
SYNGR2 / Synaptogyrin 2 Rabbit anti-Human Polyclonal (Internal) Antibody - LS-A9135 - LSBio	
CatalogID:	LS-A9135
Target:	synaptogyrin 2 (SYNGR2)
Synonyms:	SYNGR2 Antibody, Cellugyrin Antibody, Synaptogyrin 2 Antibody, Synaptogyrin-2 Antibody
Host	SYNGR2 antibody was produced in Rabbit
Clonality:	Polyclonal
Immunogen Species:	SYNGR2 / Synaptogyrin 2 antibody was raised against Human
Antigen Type:	Synthetic peptide
Immunogen:	SYNGR2 / Synaptogyrin 2 antibody was raised against synthetic 18 amino acid peptide from internal region of human SYNGR2 / Synaptogyrin 2. Percent identity with other species by BLAST analysis: Human, Orangutan, Gibbon, Monkey, Mouse, Rat, Hamster, Panda, Bovine, Horse (100%); Marmoset, Elephant, Guinea pig (94%); Galago, Dog, Rabbit (89%); Opossum (83%).
Specificity:	Human SYNGR2 / Synaptogyrin 2. BLAST analysis of the peptide immunogen showed no homology with other human proteins.
Epitope:	Internal
Reactivity:	Human, Orangutan, Gibbon, Mouse, Rat, Bovine, Hamster, Horse
Predicted Reactivity:	Monkey, Guinea pig
Purification:	Immunoaffinity purified
Presentation:	PBS, 0.1% sodium azide.
Recommended Storage:	Long term: -70°C; Short term: +4°C
Usage Summary:	Immunohistochemistry with formalin-fixed paraffin-embedded tissues requires pretreatment with Proteinase K.
Uses:	IHC - Paraffin (15 - 20 µg/ml) (Optimal dilution to be determined by the researcher)
Size:	50 µg
Concentration:	1 mg/ml

Immunohistochemistry Image:



Anti-SYNGR2 / Synaptogyrin 2 antibody LS-A9135 IHC of human, prostate.
Immunohistochemistry of formalin-fixed, paraffin-embedded tissue after heat-induced antigen retrieval.

Immunohistochemistry Image:



Anti-SYNGR2 / Synaptogyrin 2 antibody LS-A9135 IHC of human, breast.
Immunohistochemistry of formalin-fixed, paraffin-embedded tissue after heat-induced antigen retrieval.

Requested From:

Japan

Laboratory Reagent For In Vitro Research Use Only

Not for resale without prior written consent from LifeSpan BioSciences, Inc.

Created on 9/23/2014

© 2014 LifeSpan BioSciences