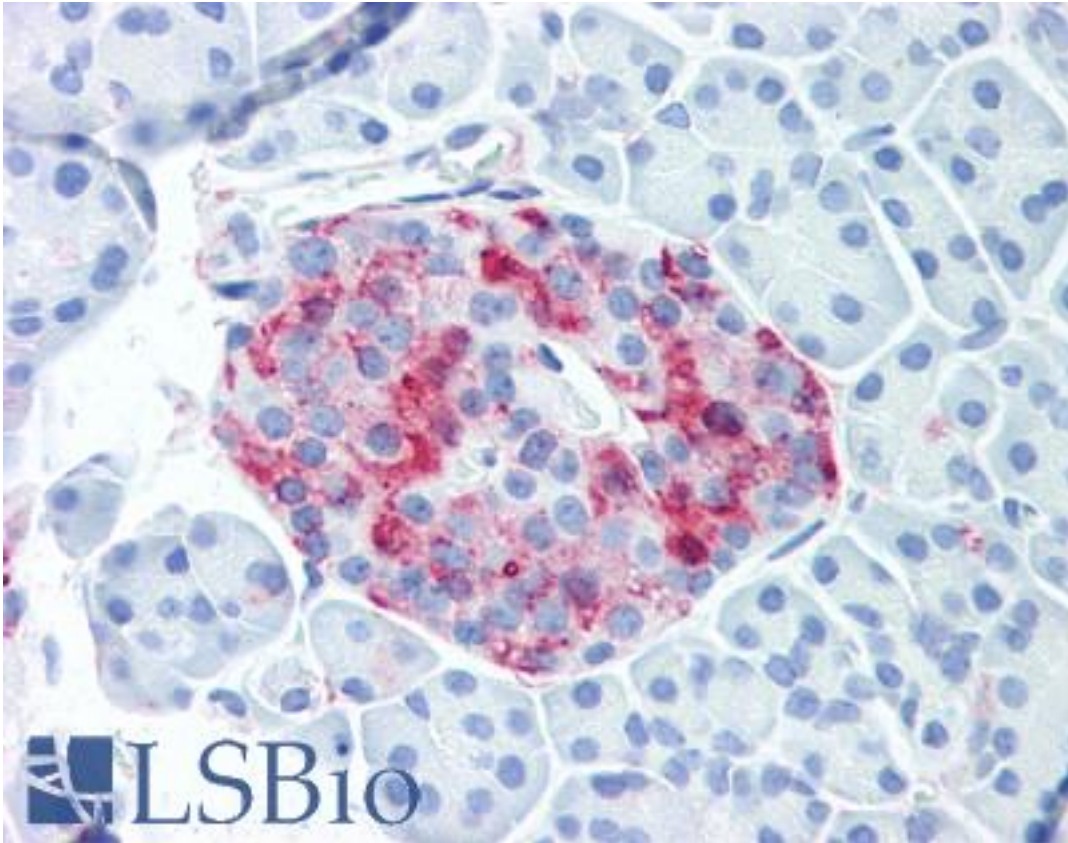


WNT10A Rabbit anti-Human Polyclonal (Internal) Antibody - LS-A9076 - LSBio	
CatalogID:	LS-A9076
Target:	wingless-type MMTV integration site family, member 10A (WNT10A)
Synonyms:	WNT10A Antibody, SSPS Antibody, STHAG4 Antibody, OODD Antibody, Protein Wnt-10a Antibody
Family / Subfamily:	WNT / not assigned-WNT
Host	WNT10A antibody was produced in Rabbit
Clonality:	Polyclonal
Immunogen Species:	WNT10A antibody was raised against Human
Antigen Type:	Synthetic peptide
Immunogen:	WNT10A antibody was raised against synthetic 18 amino acid peptide from internal region of human WNT10A. Percent identity with other species by BLAST analysis: Human, Gorilla, Gibbon, Monkey, Marmoset, Mouse, Rat, Hamster, Panda, Bovine, Dog, Rabbit (100%); Elephant, Bat (94%); Chicken (89%); Opossum, Turkey, Lizard, Xenopus, Stickleback, Pufferfish (83%).
Specificity:	Human WNT10A. BLAST analysis of the peptide immunogen showed no homology with other human proteins.
Epitope:	Internal
Reactivity:	Human, Gorilla, Gibbon, Monkey, Mouse, Rat, Bovine, Dog, Hamster, Rabbit
Predicted Reactivity:	Bat
Purification:	Immunoaffinity purified
Presentation:	PBS, 0.1% sodium azide.
Recommended Storage:	Long term: -70°C; Short term: +4°C
Uses:	IHC - Paraffin (5 µg/ml) (Optimal dilution to be determined by the researcher)
Size:	50 µg

Immunohistochemistry Image:



Anti-WNT10A antibody LS-A9076 IHC of human pancreatic islet. Immunohistochemistry of formalin-fixed, paraffin-embedded tissue after heat-induced antigen retrieval.

Requested From:

Japan

Laboratory Reagent For In Vitro Research Use Only

Not for resale without prior written consent from LifeSpan BioSciences, Inc.

Created on 9/23/2014

© 2014 LifeSpan BioSciences