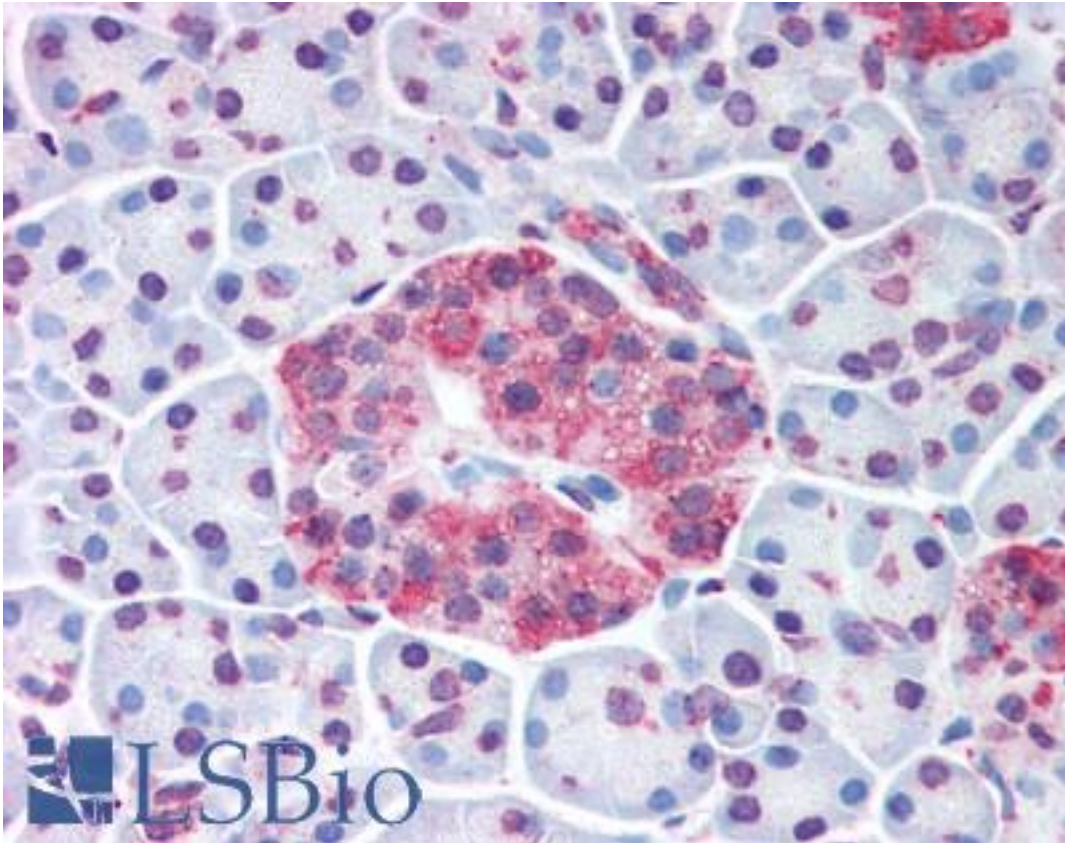


WNT10A Rabbit anti-Human Polyclonal (Internal) Antibody - LS-A9075 - LSBio	
CatalogID:	LS-A9075
Target:	wingless-type MMTV integration site family, member 10A (WNT10A)
Synonyms:	WNT10A Antibody, SSPS Antibody, STHAG4 Antibody, OODD Antibody, Protein Wnt-10a Antibody
Family / Subfamily:	WNT / not assigned-WNT
Host	WNT10A antibody was produced in Rabbit
Clonality:	Polyclonal
Immunogen Species:	WNT10A antibody was raised against Human
Antigen Type:	Synthetic peptide
Immunogen:	WNT10A antibody was raised against synthetic 16 amino acid peptide from internal region of human WNT10A. Percent identity with other species by BLAST analysis: Human, Gorilla, Gibbon, Monkey, Marmoset, Dog, Bovine, Bat, Elephant, Panda, Rabbit (100%); Rat, Hamster, Opossum (94%).
Specificity:	Human WNT10A. BLAST analysis of the peptide immunogen showed no homology with other human proteins, except PTPRD (44%).
Epitope:	Internal
Reactivity:	Human, Gorilla, Gibbon, Monkey, Bat, Bovine, Dog, Rabbit
Predicted Reactivity:	Rat, Hamster
Purification:	Immunoaffinity purified
Presentation:	PBS, 0.1% sodium azide.
Recommended Storage:	Long term: -70°C; Short term: +4°C
Usage Summary:	Immunohistochemistry: LS-A9075 was validated for use in immunohistochemistry on a panel of 21 formalin-fixed, paraffin-embedded (FFPE) human tissues after heat induced antigen retrieval in pH 6.0 citrate buffer. After incubation with the primary antibody, slides were incubated with biotinylated secondary antibody, followed by alkaline phosphatase-streptavidin and chromogen. The stained slides were evaluated by a pathologist to confirm staining specificity. The optimal working concentration for LS-A9075 was determined to be 10 ug/ml.
Uses:	IHC - Paraffin (10 µg/ml) (Optimal dilution to be determined by the researcher)
Size:	50 µg
Concentration:	1 mg/ml

Immunohistochemistry Image:



Anti-WNT10A antibody LS-A9075 IHC of human pancreatic islet. Immunohistochemistry of formalin-fixed, paraffin-embedded tissue after heat-induced antigen retrieval.

Requested From:

Japan

Laboratory Reagent For In Vitro Research Use Only

Not for resale without prior written consent from LifeSpan BioSciences, Inc.

Created on 9/23/2014

© 2014 LifeSpan BioSciences