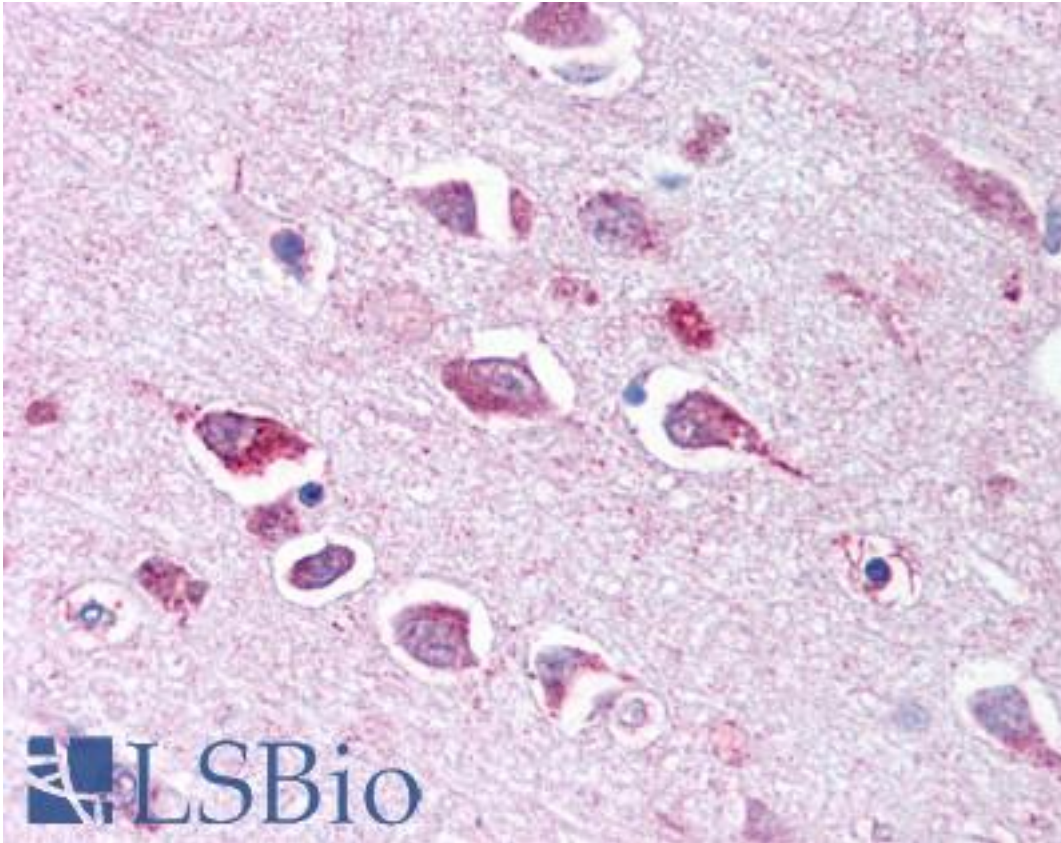


TLL2 Rabbit anti-Human Polyclonal (CUB 2 Domain) Antibody - LS-A9072 - LSBio	
<b>CatalogID:</b>	LS-A9072
<b>Target:</b>	tolloid-like 2 (TLL2)
<b>Synonyms:</b>	TLL2 Antibody, MTLL-2 Antibody, KIAA0932 Antibody, Tolloid-like 2 Antibody, Tolloid-like protein 2 Antibody
<b>Family / Subfamily:</b>	Protease / Metallopeptidase M12A
<b>Host</b>	TLL2 antibody was produced in Rabbit
<b>Clonality:</b>	Polyclonal
<b>Immunogen Species:</b>	TLL2 antibody was raised against Human
<b>Antigen Type:</b>	Synthetic peptide
<b>Immunogen:</b>	TLL2 antibody was raised against synthetic 13 amino acid peptide from CUB 2 domain human TLL2. Percent identity with other species by BLAST analysis: Human, Gibbon, Monkey, Galago, Marmoset, Rat, Dog, Bat, Pig (100%); Gorilla, Hamster, Panda (92%); Mouse, Horse (85%).
<b>Specificity:</b>	Human TLL2. BLAST analysis of the peptide immunogen showed no homology with other human proteins.
<b>Epitope:</b>	CUB 2 Domain
<b>Reactivity:</b>	Human, Gibbon, Monkey, Rat, Bat, Dog, Pig
<b>Predicted Reactivity:</b>	Gorilla, Hamster
<b>Purification:</b>	Immunoaffinity purified
<b>Presentation:</b>	PBS, 0.1% sodium azide.
<b>Recommended Storage:</b>	Long term: -70°C; Short term: +4°C
<b>Uses:</b>	IHC - Paraffin (20 µg/ml) (Optimal dilution to be determined by the researcher)
<b>Size:</b>	50 µg
<b>Concentration:</b>	1 mg/ml

**Immunohistochemistry Image:**



Anti-TLL2 antibody LS-A9072 IHC of human brain, neurons and glia. Immunohistochemistry of formalin-fixed, paraffin-embedded tissue after heat-induced antigen retrieval.

**Requested From:**

Japan

Laboratory Reagent For In Vitro Research Use Only

Not for resale without prior written consent from LifeSpan BioSciences, Inc.

Created on 9/23/2014

© 2014 LifeSpan BioSciences