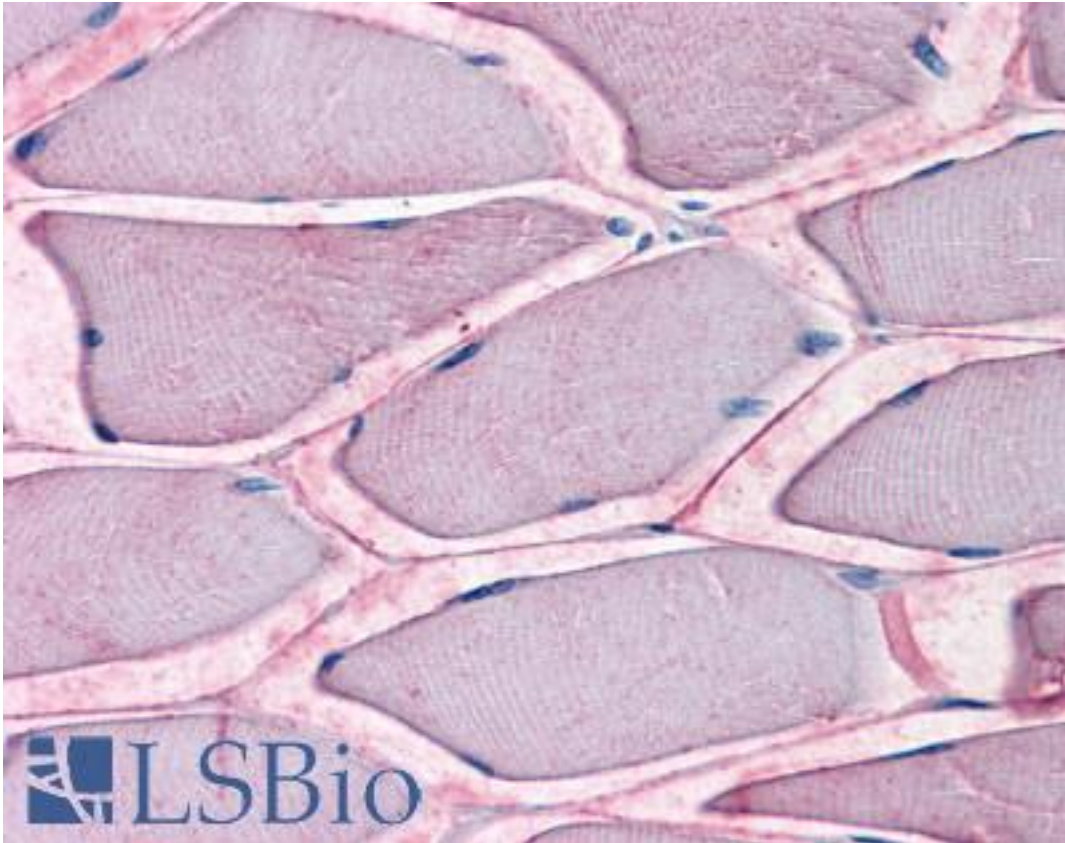


SLC1A5 / ASCT2 Rabbit anti-Human Polyclonal (Internal) Antibody - LS-A9043 - LSBio

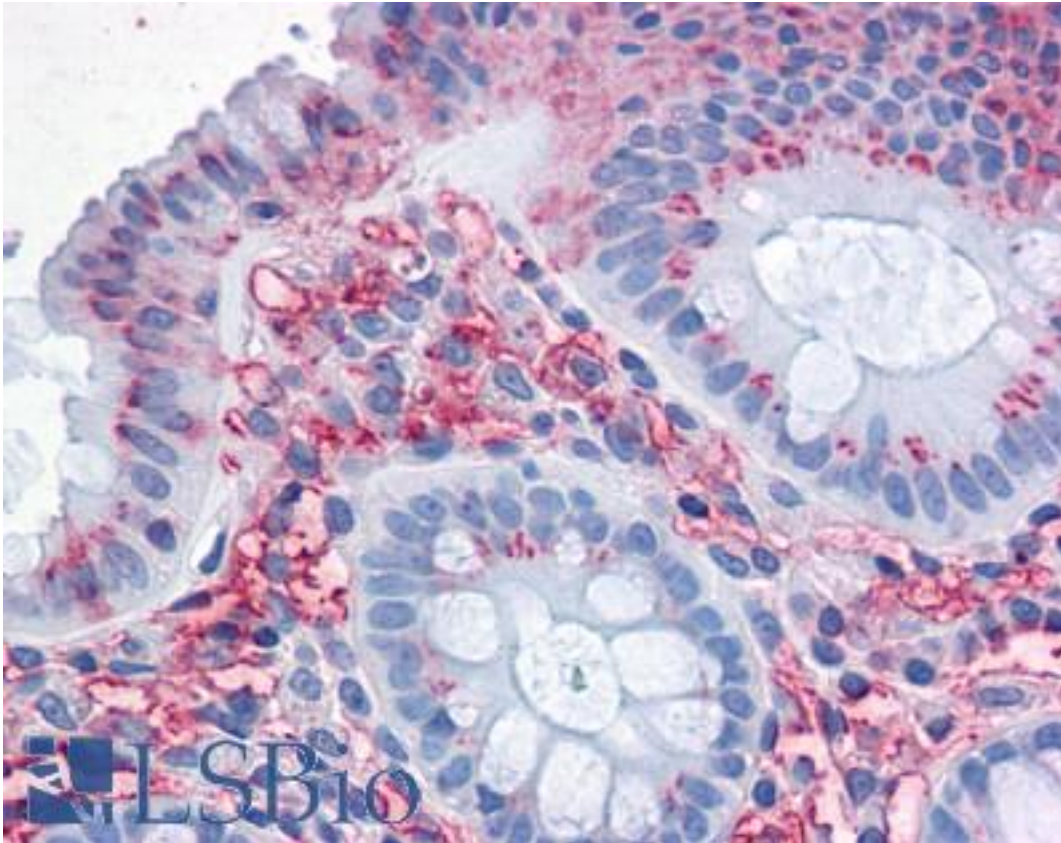
| | |
|------------------------------|-------------------------------------------------------------------------------------------------------------------------------------------------------------------------------------------------------------------------------------------|
| CatalogID: | LS-A9043 |
| Target: | solute carrier family 1 (neutral amino acid transporter), member 5 (SLC1A5) |
| Synonyms: | SLC1A5 Antibody, ATBO Antibody, ASCT2 Antibody, ATB0 Antibody, Baboon M7 virus receptor Antibody, AAAT Antibody, M7VS1 Antibody, M7V1 Antibody, R16 Antibody, RDRC Antibody, RD114 virus receptor Antibody, RDR Antibody, ATB(0) Antibody |
| Family / Subfamily: | Transporter / Sodium:dicarboxylate symporter |
| Host | SLC1A5 antibody was produced in Rabbit |
| Clonality: | Polyclonal |
| Immunogen Species: | SLC1A5 / ASCT2 antibody was raised against Human |
| Antigen Type: | Synthetic peptide |
| Immunogen: | SLC1A5 / ASCT2 antibody was raised against synthetic 17 amino acid peptide from internal region of human SLC1A5. Percent identity with other species by BLAST analysis: Human, Gorilla, Monkey (100%); Gibbon (94%). |
| Specificity: | Human SLC1A5. BLAST analysis of the peptide immunogen showed no homology with other human proteins. |
| Epitope: | Internal |
| Reactivity: | Human, Gorilla, Monkey |
| Predicted Reactivity: | Gibbon |
| Purification: | Immunoaffinity purified |
| Presentation: | PBS, 0.1% sodium azide. |
| Recommended Storage: | Short term 4°C, long term aliquot and store at -20°C, avoid freeze thaw cycles. |
| Uses: | IHC - Paraffin (15 - 20 µg/ml) (Optimal dilution to be determined by the researcher) |
| Size: | 50 µg |
| Concentration: | 1 mg/ml |

Immunohistochemistry Image:



Anti-SLC1A5 antibody LS-A9043 IHC of human skeletal muscle. Immunohistochemistry of formalin-fixed, paraffin-embedded tissue after heat-induced antigen retrieval.

Immunohistochemistry Image:



Anti-SLC1A5 antibody LS-A9043 IHC of human colon. Immunohistochemistry of formalin-fixed, paraffin-embedded tissue after heat-induced antigen retrieval.

Requested From:

Japan

Laboratory Reagent For In Vitro Research Use Only

Not for resale without prior written consent from LifeSpan BioSciences, Inc.

Created on 9/23/2014

© 2014 LifeSpan BioSciences