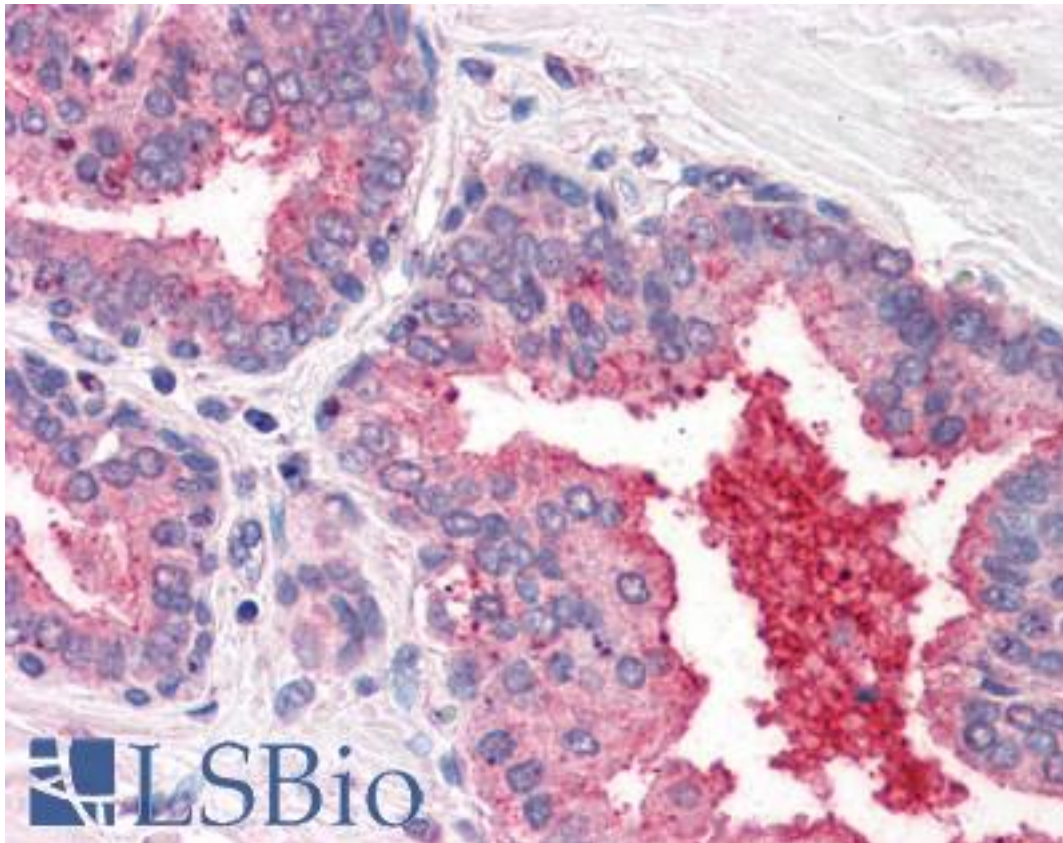


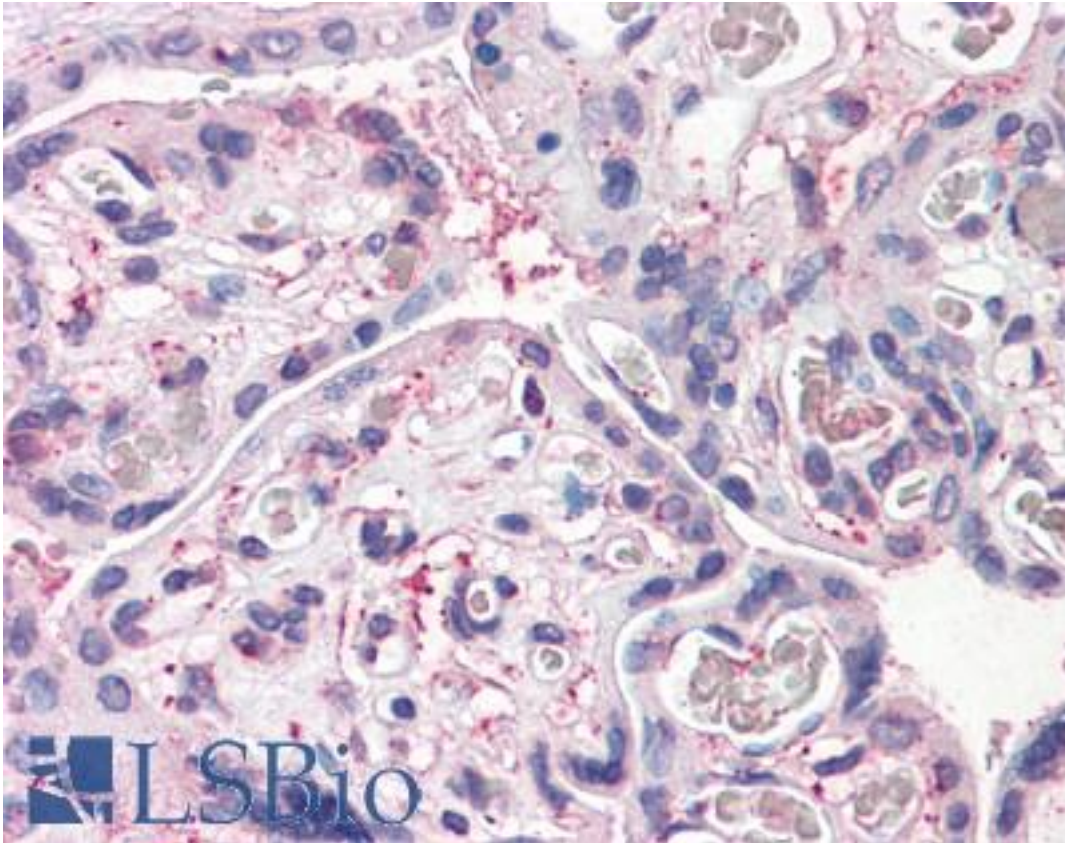
DPP4 / CD26 Rabbit anti-Human Polyclonal (N-Terminus) Antibody - LS-A9025 - LSBio	
<b>CatalogID:</b>	LS-A9025
<b>Target:</b>	dipeptidyl-peptidase 4 (DPP4)
<b>Synonyms:</b>	DPP4 Antibody, ADCP-2 Antibody, ADABP Antibody, Dipeptidyl peptidase IV Antibody, Dipeptidyl-peptidase 4 Antibody, DPPIV Antibody, ADCP2 Antibody, T-cell activation antigen CD26 Antibody, CD26 Antibody, CD26 antigen Antibody, Dipeptidyl peptidase 4 Antibody, Dipeptidylpeptidase 4 Antibody, DPP IV Antibody, TP103 Antibody
<b>Family / Subfamily:</b>	Protease / Serine S9B
<b>Host</b>	DPP4 antibody was produced in Rabbit
<b>Clonality:</b>	Polyclonal
<b>Immunogen Species:</b>	DPP4 / CD26 antibody was raised against Human
<b>Antigen Type:</b>	Synthetic peptide
<b>Immunogen:</b>	DPP4 / CD26 antibody was raised against synthetic 18 amino acid peptide from N-Terminus of human CD26. Percent identity with other species by BLAST analysis: Human, Chimpanzee, Gorilla, Gibbon, Monkey (100%); Orangutan, Galago, Marmoset, Horse (94%); Elephant, Dog, Pig (89%); Panda, Cat (83%).
<b>Specificity:</b>	Human CD26. BLAST analysis of the peptide immunogen showed no homology with other human proteins.
<b>Epitope:</b>	N-Terminus
<b>Reactivity:</b>	Human, Chimpanzee, Gorilla, Gibbon
<b>Predicted Reactivity:</b>	Orangutan, Monkey, Horse
<b>Purification:</b>	Immunoaffinity purified
<b>Presentation:</b>	PBS, 0.1% sodium azide.
<b>Recommended Storage:</b>	Long term: -70°C; Short term: +4°C
<b>Uses:</b>	IHC - Paraffin (15 - 20 µg/ml) (Optimal dilution to be determined by the researcher)
<b>Size:</b>	50 µg
<b>Concentration:</b>	1 mg/ml

**Immunohistochemistry Image:**



Anti-CD26 antibody LS-A9025 IHC of human prostate. Immunohistochemistry of formalin-fixed, paraffin-embedded tissue after heat-induced antigen retrieval.

**Immunohistochemistry Image:**



Anti-CD26 antibody LS-A9025 IHC of human placenta. Immunohistochemistry of formalin-fixed, paraffin-embedded tissue after heat-induced antigen retrieval.

**Requested From:**

Japan

Laboratory Reagent For In Vitro Research Use Only

Not for resale without prior written consent from LifeSpan BioSciences, Inc.

Created on 9/23/2014

© 2014 LifeSpan BioSciences