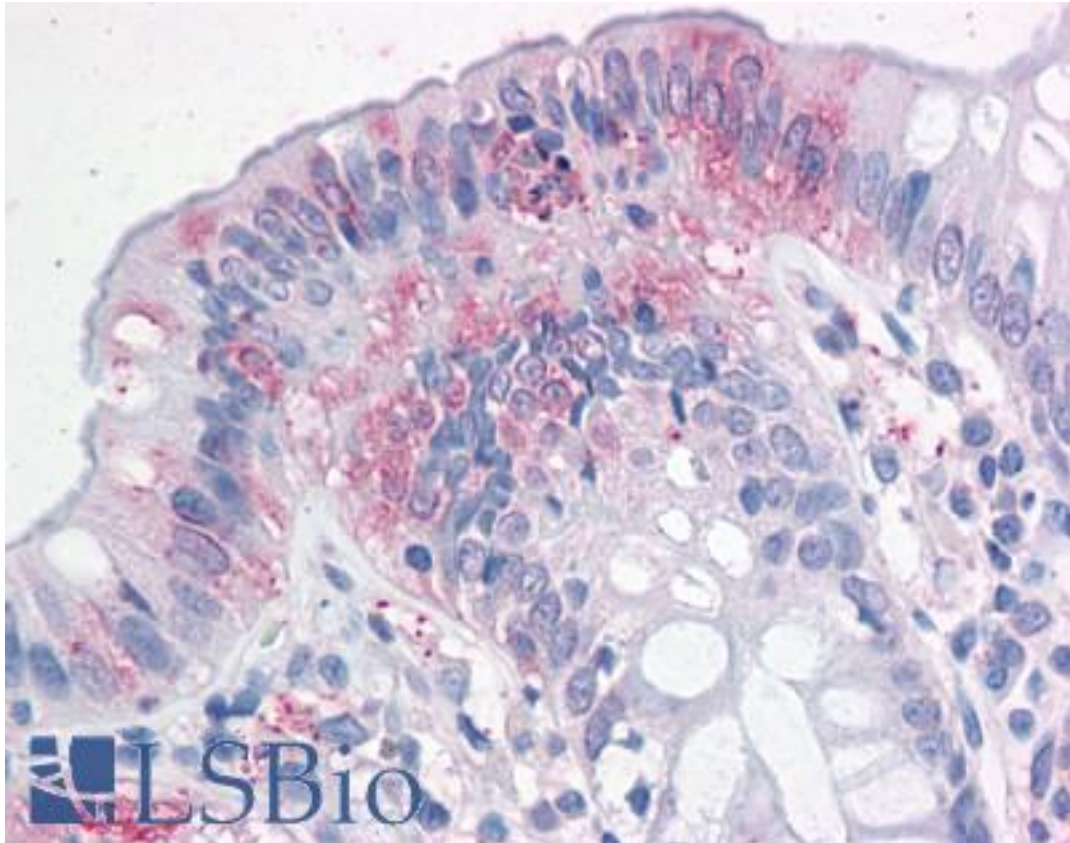


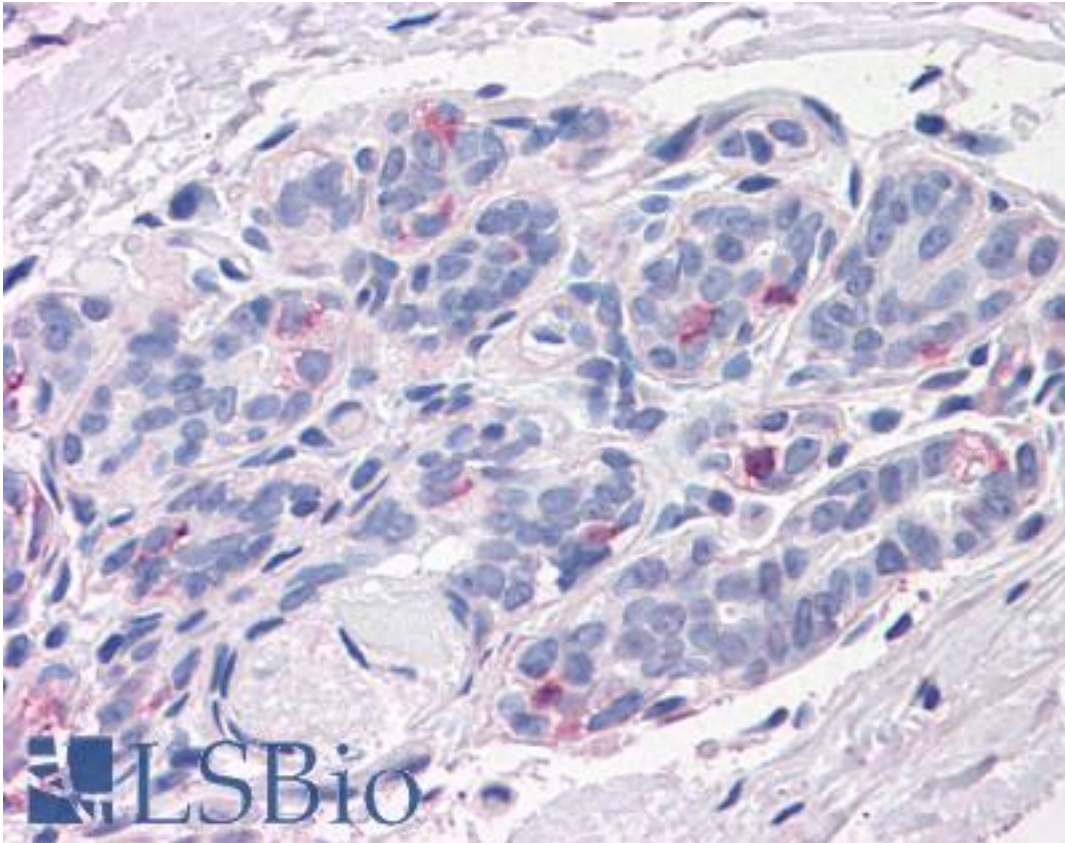
NPTN / SDR1 Rabbit anti-Human Polyclonal (N-Terminus) Antibody - LS-A9023 - LSBio	
<b>CatalogID:</b>	LS-A9023
<b>Target:</b>	neuroplastin (NPTN)
<b>Synonyms:</b>	NPTN Antibody, gp65 Antibody, gp55 Antibody, Np55 Antibody, Np65 Antibody, SDR-1 Antibody, SDR1 Antibody, Neuroplastin Antibody, SDFR1 Antibody
<b>Host</b>	NPTN antibody was produced in Rabbit
<b>Clonality:</b>	Polyclonal
<b>Immunogen Species:</b>	NPTN / SDR1 antibody was raised against Human
<b>Antigen Type:</b>	Synthetic peptide
<b>Immunogen:</b>	NPTN / SDR1 antibody was raised against synthetic 16 amino acid peptide from N-terminus of human NPTN. Percent identity with other species by BLAST analysis: Human, Gorilla, Gibbon, Monkey, Marmoset, Rabbit (100%); Rat, Panda, Opossum (94%); Mouse, Bat, Dog, Bovine, Elephant, Pig (88%); Horse (81%).
<b>Specificity:</b>	Human NPTN. BLAST analysis of the peptide immunogen showed no homology with other human proteins.
<b>Epitope:</b>	N-Terminus
<b>Reactivity:</b>	Human, Gorilla, Gibbon, Monkey, Rabbit
<b>Predicted Reactivity:</b>	Rat
<b>Purification:</b>	Immunoaffinity purified
<b>Presentation:</b>	PBS, 0.1% sodium azide.
<b>Recommended Storage:</b>	Short term 4°C, long term aliquot and store at -20°C, avoid freeze thaw cycles.
<b>Uses:</b>	IHC - Paraffin (15 - 20 µg/ml) (Optimal dilution to be determined by the researcher)
<b>Size:</b>	50 µg
<b>Concentration:</b>	1 mg/ml

**Immunohistochemistry Image:**



Anti-NPTN antibody LS-A9023 IHC of human colon. Immunohistochemistry of formalin-fixed, paraffin-embedded tissue after heat-induced antigen retrieval.

**Immunohistochemistry Image:**



Anti-NPTN antibody LS-A9023 IHC of human breast. Immunohistochemistry of formalin-fixed, paraffin-embedded tissue after heat-induced antigen retrieval.

**Requested From:**

Japan

Laboratory Reagent For In Vitro Research Use Only

Not for resale without prior written consent from LifeSpan BioSciences, Inc.

Created on 9/23/2014

© 2014 LifeSpan BioSciences