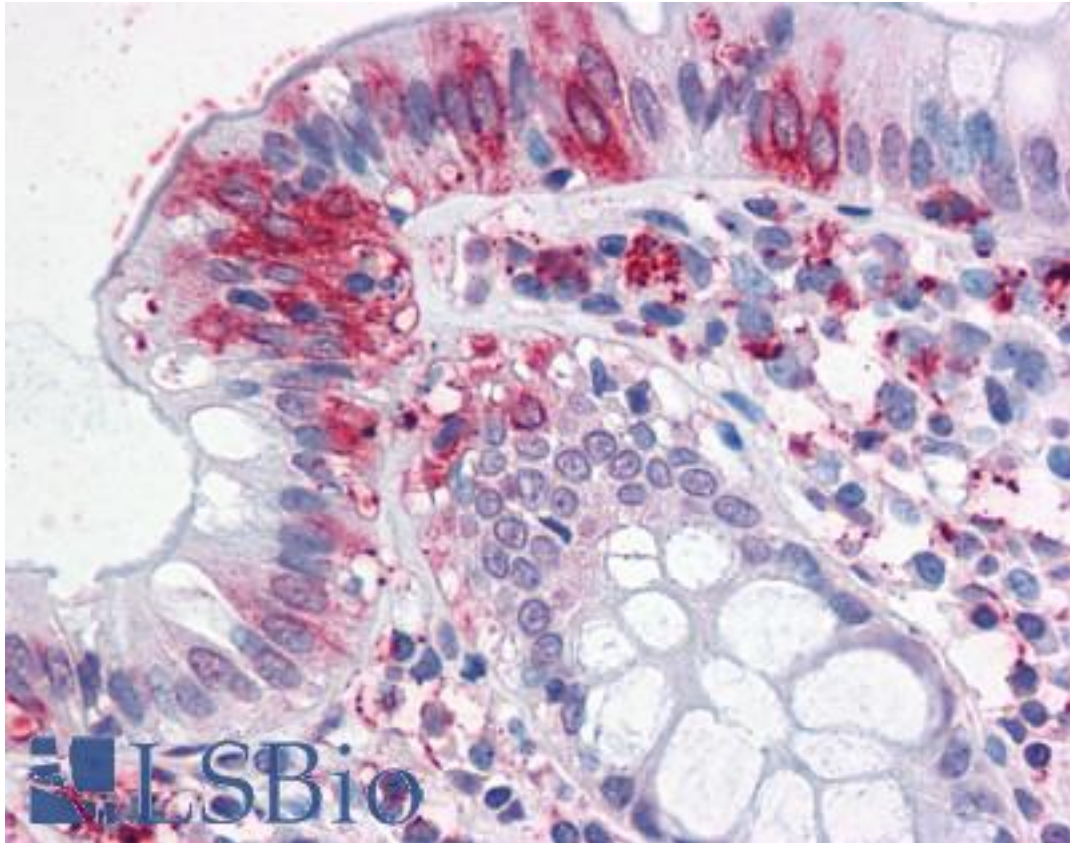


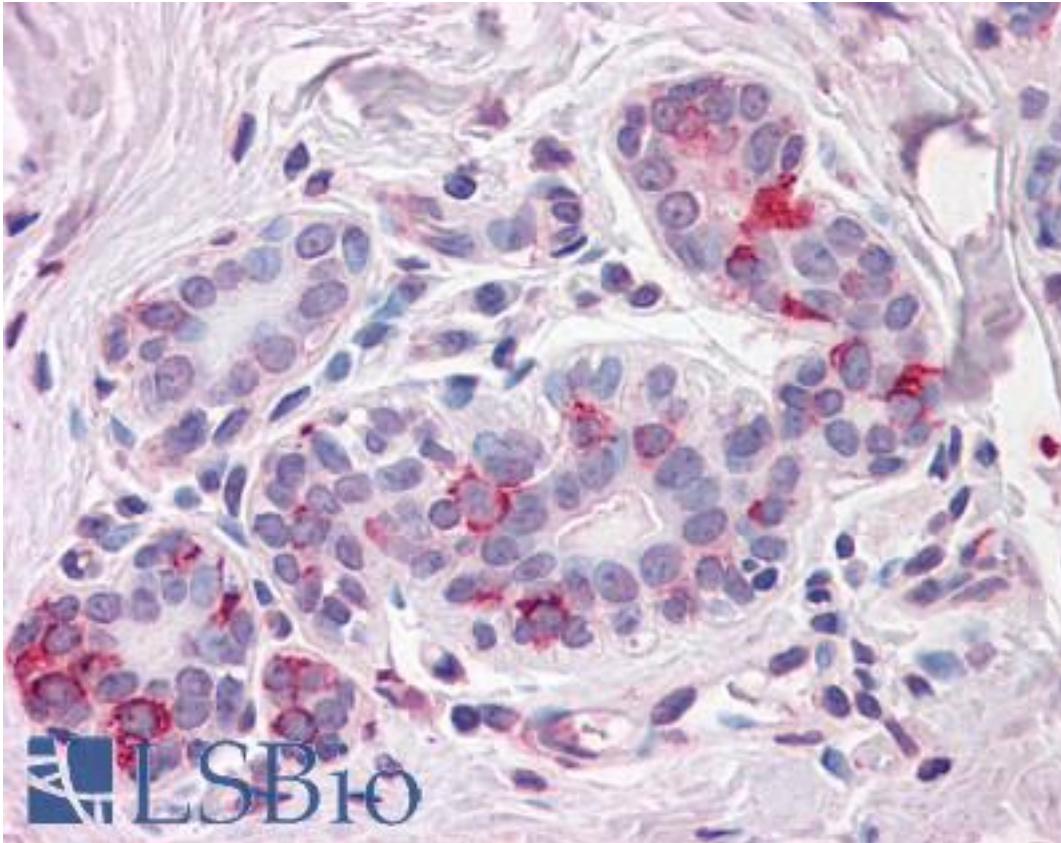
NPTN / SDR1 Rabbit anti-Human Polyclonal (Internal) Antibody - LS-A9022 - LSBio	
CatalogID:	LS-A9022
Target:	neuroplastin (NPTN)
Synonyms:	NPTN Antibody, gp65 Antibody, gp55 Antibody, Np55 Antibody, Np65 Antibody, SDR-1 Antibody, SDR1 Antibody, Neuroplastin Antibody, SDR1 Antibody
Host	NPTN antibody was produced in Rabbit
Clonality:	Polyclonal
Immunogen Species:	NPTN / SDR1 antibody was raised against Human
Antigen Type:	Synthetic peptide
Immunogen:	NPTN / SDR1 antibody was raised against synthetic 19 amino acid peptide from internal region of human NPTN. Percent identity with other species by BLAST analysis: Human, Chimpanzee, Gorilla, Orangutan, Gibbon, Monkey, Galago, Marmoset, Mouse, Rat, Hamster, Elephant, Panda, Dog, Bat, Bovine, Horse, Rabbit, Pig, Guinea pig (100%); Opossum, Turkey, Zebra finch, Chicken, Platypus, Lizard (89%); Salmon, Stickleback, Pufferfish (84%).
Specificity:	Human NPTN. BLAST analysis of the peptide immunogen showed no homology with other human proteins.
Epitope:	Internal
Reactivity:	Human, Chimpanzee, Gorilla, Orangutan, Gibbon, Monkey, Mouse, Rat, Bat, Bovine, Dog, Guinea pig, Hamster, Horse, Pig, Rabbit
Purification:	Immunoaffinity purified
Presentation:	PBS, 0.1% sodium azide.
Recommended Storage:	Long term: -70°C; Short term: +4°C
Uses:	IHC - Paraffin (15 - 20 µg/ml) (Optimal dilution to be determined by the researcher)
Size:	50 µg
Concentration:	1 mg/ml

Immunohistochemistry Image:



Anti-NPTN antibody LS-A9022 IHC of human colon. Immunohistochemistry of formalin-fixed, paraffin-embedded tissue after heat-induced antigen retrieval.

Immunohistochemistry Image:



Anti-NPTN antibody LS-A9022 IHC of human breast. Immunohistochemistry of formalin-fixed, paraffin-embedded tissue after heat-induced antigen retrieval.

Requested From:

Japan

Laboratory Reagent For In Vitro Research Use Only

Not for resale without prior written consent from LifeSpan BioSciences, Inc.

Created on 9/23/2014

© 2014 LifeSpan BioSciences