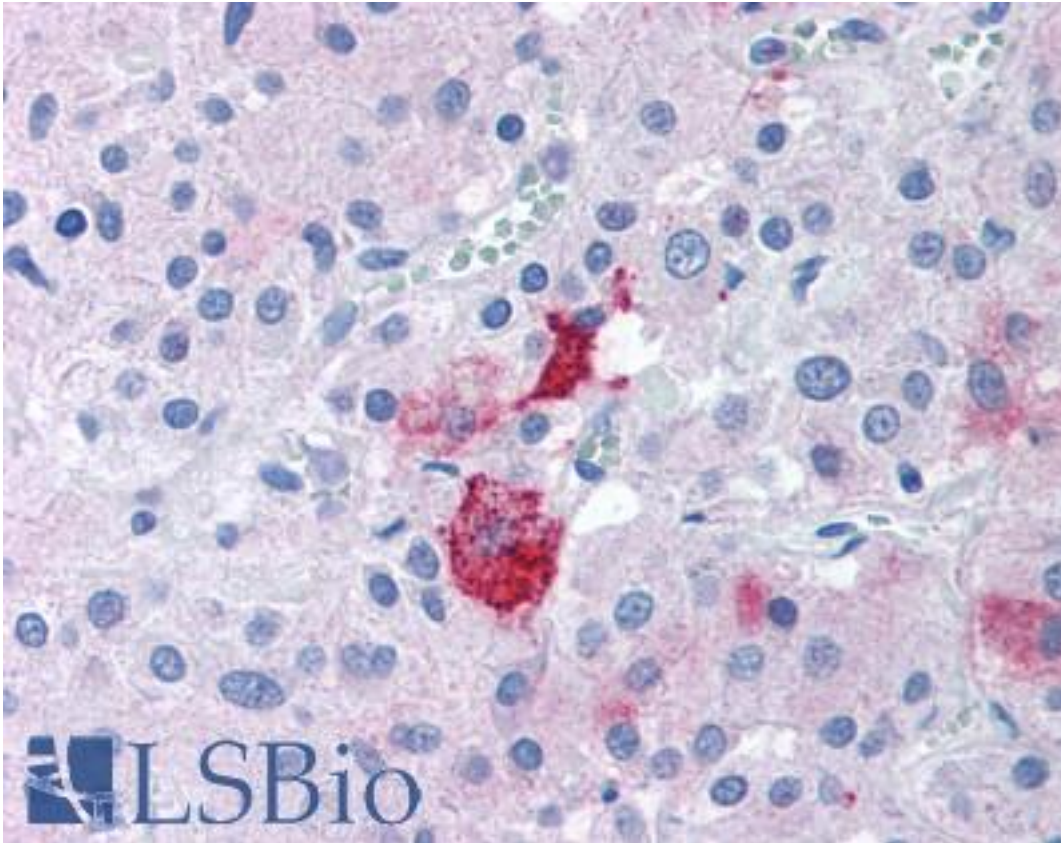


SEH / EPHX2 Rabbit anti-Human Polyclonal (N-Terminus) Antibody - LS-A8988 - LSBio	
CatalogID:	LS-A8988
Target:	epoxide hydrolase 2, cytoplasmic (EPHX2)
Synonyms:	EPHX2 Antibody, CEH Antibody, Epoxide hydratase Antibody, Epoxide hydrolase, soluble Antibody, Epoxide hydrolase 2, cytosolic Antibody, SEH Antibody, Soluble epoxide hydrolase Antibody
Host	EPHX2 antibody was produced in Rabbit
Clonality:	Polyclonal
Immunogen Species:	SEH / EPHX2 antibody was raised against Human
Antigen Type:	Synthetic peptide
Immunogen:	SEH / EPHX2 antibody was raised against synthetic 19 amino acid peptide from Near the N-terminus of human EPHX2. Percent identity with other species by BLAST analysis: Human (100%); Gorilla, Orangutan (95%); Gibbon, Monkey (89%); Marmoset (84%).
Specificity:	Human EPHX2. BLAST analysis of the peptide immunogen showed no homology with other human proteins.
Epitope:	N-Terminus
Reactivity:	Human
Predicted Reactivity:	Gorilla, Orangutan
Purification:	Immunoaffinity purified
Presentation:	PBS, 0.1% sodium azide.
Recommended Storage:	Long term: -70°C; Short term: +4°C
Uses:	IHC - Paraffin (5 µg/ml) (Optimal dilution to be determined by the researcher)
Size:	50 µg
Concentration:	1 mg/ml

Immunohistochemistry Image:



Anti-EPHX2 antibody LS-A8988 IHC of human adrenal. Immunohistochemistry of formalin-fixed, paraffin-embedded tissue after heat-induced antigen retrieval.

Requested From:

Japan

Laboratory Reagent For In Vitro Research Use Only

Not for resale without prior written consent from LifeSpan BioSciences, Inc.

Created on 9/23/2014

© 2014 LifeSpan BioSciences