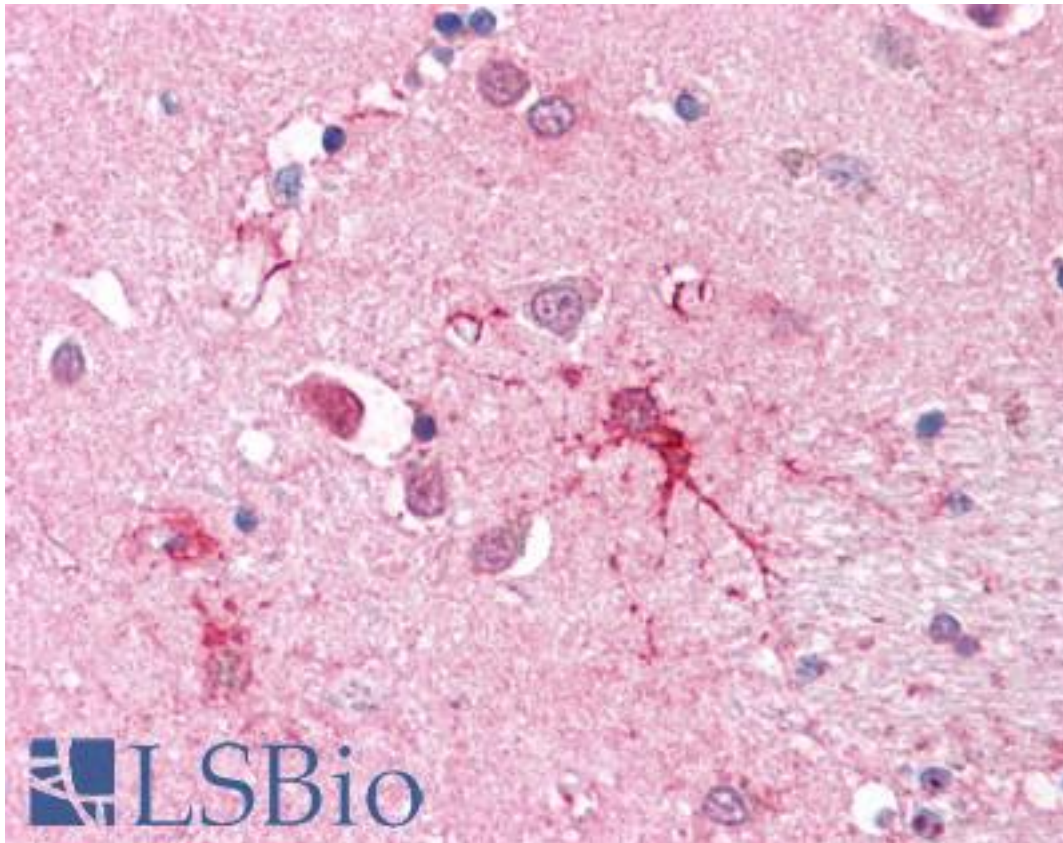


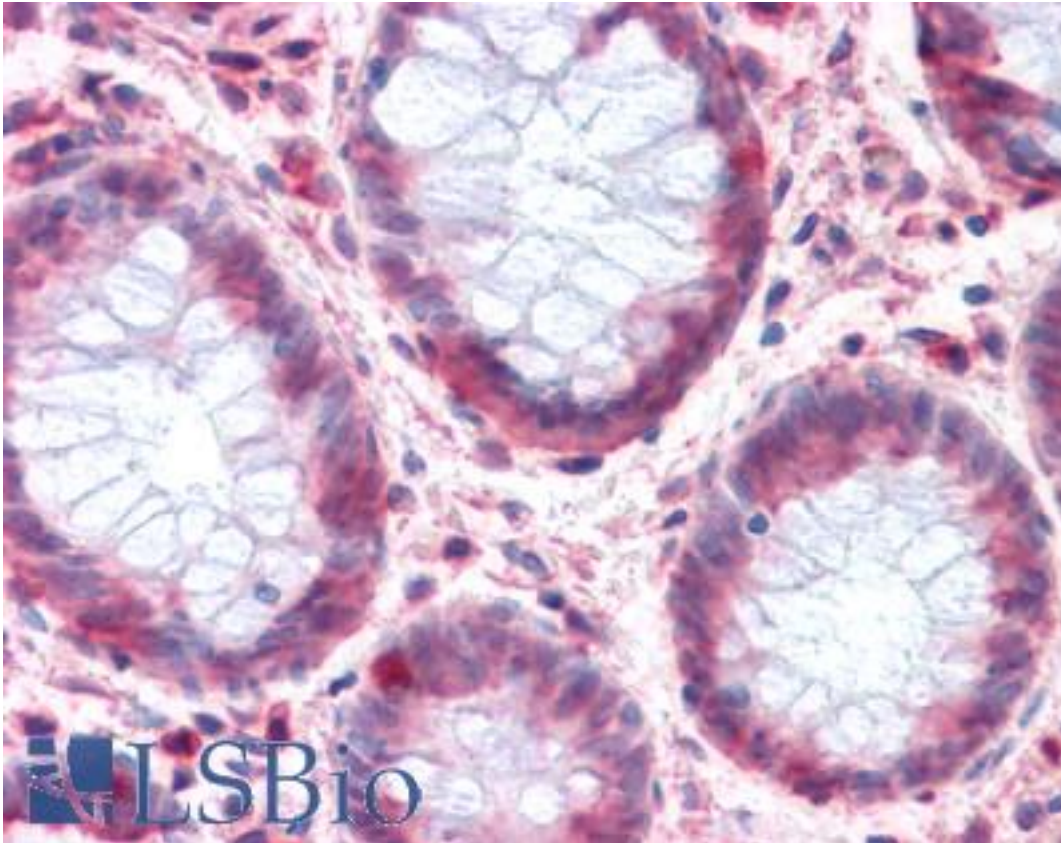
SLC1A4 / ASCT1 Rabbit anti-Human Polyclonal (C-Terminus) Antibody - LS-A8979 - LSBio	
CatalogID:	LS-A8979
Target:	solute carrier family 1 (glutamate/neutral amino acid transporter), member 4 (SLC1A4)
Synonyms:	SLC1A4 Antibody, ASCT1 Antibody, SATT Antibody, ASCT-1 Antibody
Family / Subfamily:	Transporter / Sodium:dicarboxylate symporter
Host	SLC1A4 antibody was produced in Rabbit
Clonality:	Polyclonal
Immunogen Species:	SLC1A4 / ASCT1 antibody was raised against Human
Antigen Type:	Synthetic peptide
Immunogen:	SLC1A4 / ASCT1 antibody was raised against synthetic 17 amino acid peptide from C-terminus of human SLC1A4. Percent identity with other species by BLAST analysis: Human, Gorilla, Gibbon, Monkey, Dog, Panda, Opossum (100%); Marmoset, Mouse, Hamster, Rabbit, Horse, Platypus (94%); Rat, Elephant (88%); Bovine (82%).
Specificity:	Human SLC1A4. BLAST analysis of the peptide immunogen showed no homology with other human proteins.
Epitope:	C-Terminus
Reactivity:	Human, Gorilla, Gibbon, Dog
Predicted Reactivity:	Monkey, Mouse, Hamster, Horse, Rabbit
Purification:	Immunoaffinity purified
Presentation:	PBS, 0.1% sodium azide.
Recommended Storage:	Short term 4°C, long term aliquot and store at -20°C, avoid freeze thaw cycles.
Uses:	IHC - Paraffin (10 - 12.5 µg/ml) (Optimal dilution to be determined by the researcher)
Size:	50 µg
Concentration:	1 mg/ml

Immunohistochemistry Image:



Anti-SLC1A4 antibody LS-A8979 IHC of human brain-cortex. Immunohistochemistry of formalin-fixed, paraffin-embedded tissue after heat-induced antigen retrieval.

Immunohistochemistry Image:



Anti-SLC1A4 antibody LS-A8979 IHC of human colon. Immunohistochemistry of formalin-fixed, paraffin-embedded tissue after heat-induced antigen retrieval.

Requested From:

Japan

Laboratory Reagent For In Vitro Research Use Only

Not for resale without prior written consent from LifeSpan BioSciences, Inc.

Created on 9/23/2014

© 2014 LifeSpan BioSciences