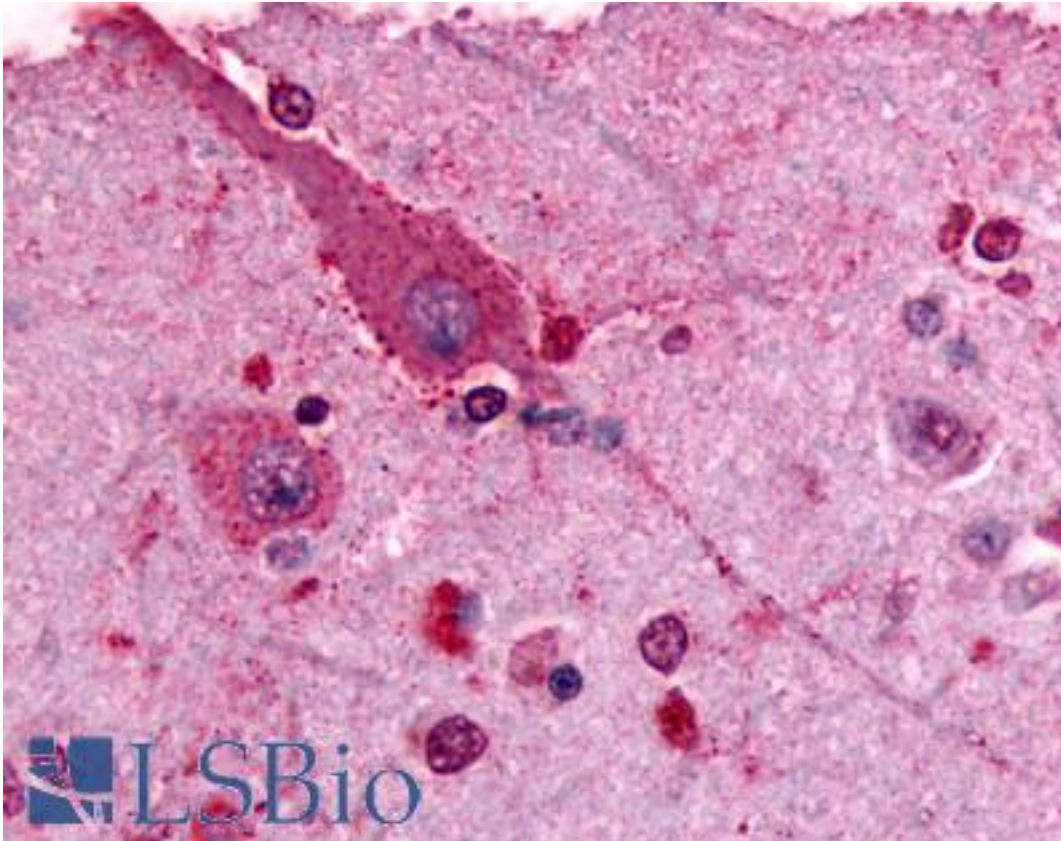


GRM2 / MGLUR2 Rabbit anti-Human Polyclonal (N-Terminus) Antibody - LS-A895 - LSBio	
CatalogID:	LS-A895
Target:	glutamate receptor, metabotropic 2 (GRM2)
Synonyms:	GRM2 Antibody, Glutamate receptor homolog Antibody, GPRC1B Antibody, MGLu2 Antibody, Metabotropic Antibody, GLUR2 Antibody, MGLUR2 Antibody
Family / Subfamily:	GPCR / Metabotropic glutamate
Host	GRM2 antibody was produced in Rabbit
Clonality:	Polyclonal
Immunogen Species:	GRM2 / MGLUR2 antibody was raised against Human
Antigen Type:	Synthetic peptide
Immunogen:	GRM2 / MGLUR2 antibody was raised against synthetic 17 amino acid peptide from N-terminal extracellular domain of human GRM2 / MGLUR2. Percent identity with other species by BLAST analysis: Human, Chimpanzee, Gorilla, Gibbon, Monkey, Hamster, Rabbit (100%); Marmoset, Panda, Bovine, Dog, Bat, Horse (94%); Mouse, Rat, Elephant, Platypus (88%); Turkey, Chicken (82%).
Specificity:	Human GRM2 / MGLUR2. BLAST analysis of the peptide immunogen showed no homology with other human proteins.
Epitope:	N-Terminus
Reactivity:	Human, Chimpanzee, Gorilla, Gibbon, Hamster, Rabbit
Predicted Reactivity:	Monkey, Bat, Bovine, Dog, Horse
Purification:	Immunoaffinity purified
Presentation:	PBS, 0.1% sodium azide.
Recommended Storage:	Long term: -70°C; Short term: +4°C
Uses:	IHC - Paraffin (19 µg/ml), Western blot (Optimal dilution to be determined by the researcher)
Size:	50 µg
Concentration:	1 mg/ml

Immunohistochemistry Image:



Anti-GRM2 / MGLUR2 antibody LS-A895 IHC of human brain, neurons and glia.
Immunohistochemistry of formalin-fixed, paraffin-embedded tissue after heat-induced antigen retrieval.

Requested From:

Japan

Laboratory Reagent For In Vitro Research Use Only

Not for resale without prior written consent from LifeSpan BioSciences, Inc.

Created on 9/23/2014

© 2014 LifeSpan BioSciences