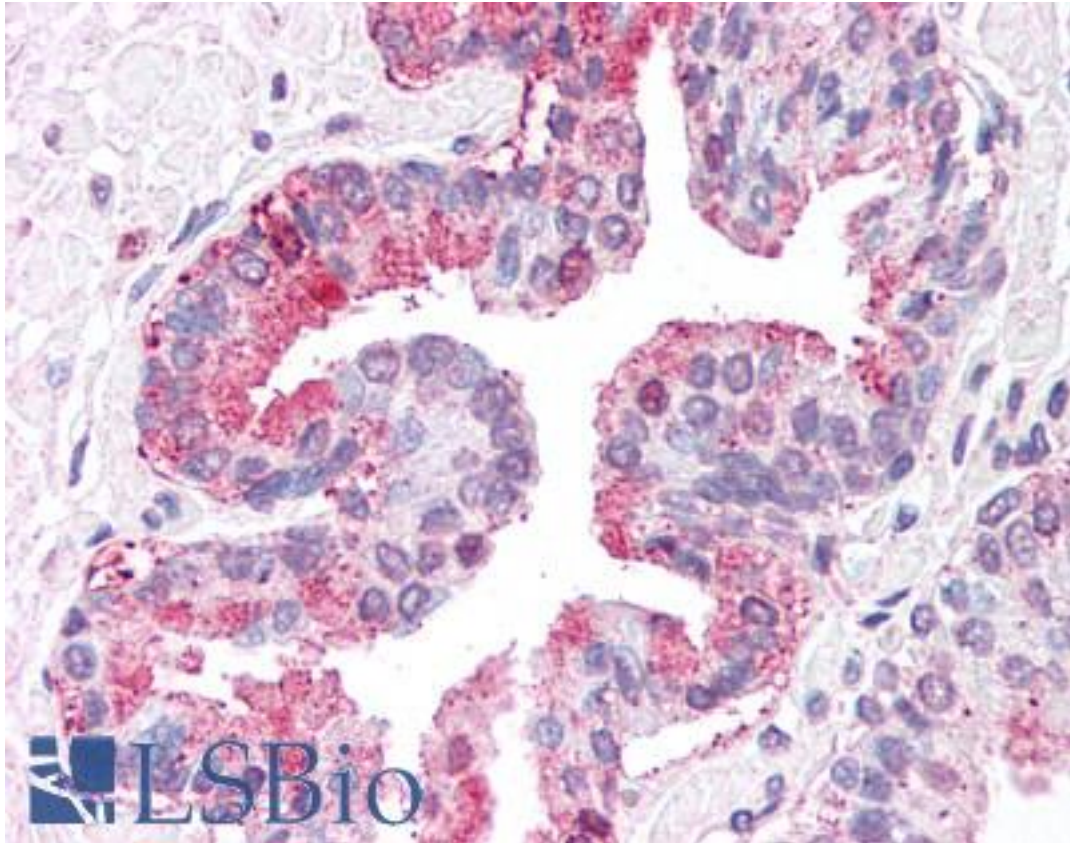


ARTS1 / ERAP1 Rabbit anti-Human Polyclonal (Internal) Antibody - LS-A8945 - LSBio

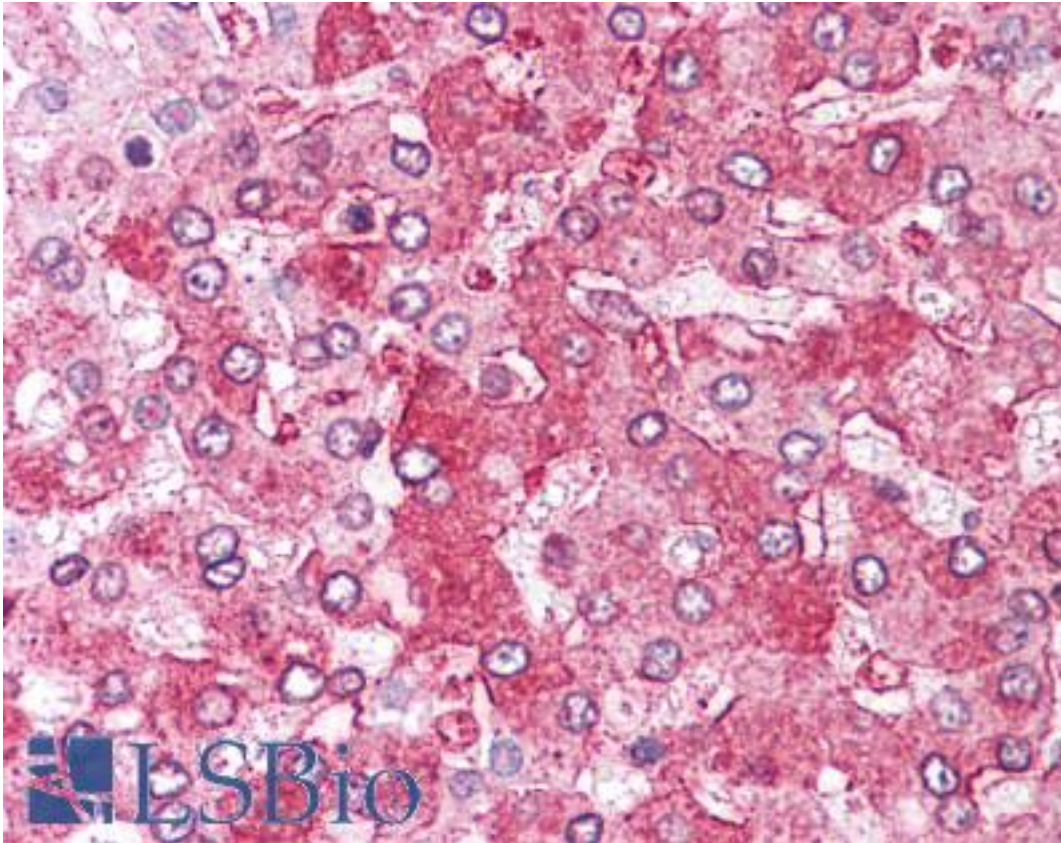
CatalogID:	LS-A8945
Target:	endoplasmic reticulum aminopeptidase 1 (ERAP1)
Synonyms:	ERAP1 Antibody, A-LAP Antibody, ALAP Antibody, APPILS Antibody, ARTS1 Antibody, ERAAP Antibody, ERAAP1 Antibody, KIAA0525 Antibody, PILS-AP Antibody, Aminopeptidase PILS Antibody, ARTS-1 Antibody, PILSAP Antibody
Family / Subfamily:	Exopeptidase / Metallopeptidase M1
Host	ERAP1 antibody was produced in Rabbit
Clonality:	Polyclonal
Immunogen Species:	ARTS1 / ERAP1 antibody was raised against Human
Antigen Type:	Synthetic peptide
Immunogen:	ARTS1 / ERAP1 antibody was raised against synthetic 17 amino acid peptide from internal region of human ERAP1 / ARTS1. Percent identity with other species by BLAST analysis: Human, Chimpanzee, Gorilla, Orangutan, Gibbon, Monkey, Galago, Hamster (100%); Marmoset, Elephant, Panda, Dog, Bovine, Horse, Pig (94%); Mouse, Rat, Bat, Rabbit, Opossum, Guinea pig, Platypus (88%).
Specificity:	Human ERAP1 / ARTS1. BLAST analysis of the peptide immunogen showed no homology with other human proteins.
Epitope:	Internal
Reactivity:	Human, Chimpanzee, Gorilla, Orangutan, Gibbon, Hamster
Predicted Reactivity:	Monkey, Bovine, Dog, Horse, Pig
Purification:	Immunoaffinity purified
Presentation:	PBS, 0.1% sodium azide.
Recommended Storage:	Long term: -70°C; Short term: +4°C
Uses:	IHC - Paraffin (10 - 15 µg/ml) (Optimal dilution to be determined by the researcher)
Size:	50 µg
Concentration:	1 mg/ml

Immunohistochemistry Image:



Anti-ERAP1 / ARTS1 antibody LS-A8945 IHC of human prostate. Immunohistochemistry of formalin-fixed, paraffin-embedded tissue after heat-induced antigen retrieval.

Immunohistochemistry Image:



Anti-ERAP1 / ARTS1 antibody LS-A8945 IHC of human liver. Immunohistochemistry of formalin-fixed, paraffin-embedded tissue after heat-induced antigen retrieval.

Requested From:

Japan

Laboratory Reagent For In Vitro Research Use Only

Not for resale without prior written consent from LifeSpan BioSciences, Inc.

Created on 9/23/2014

© 2014 LifeSpan BioSciences