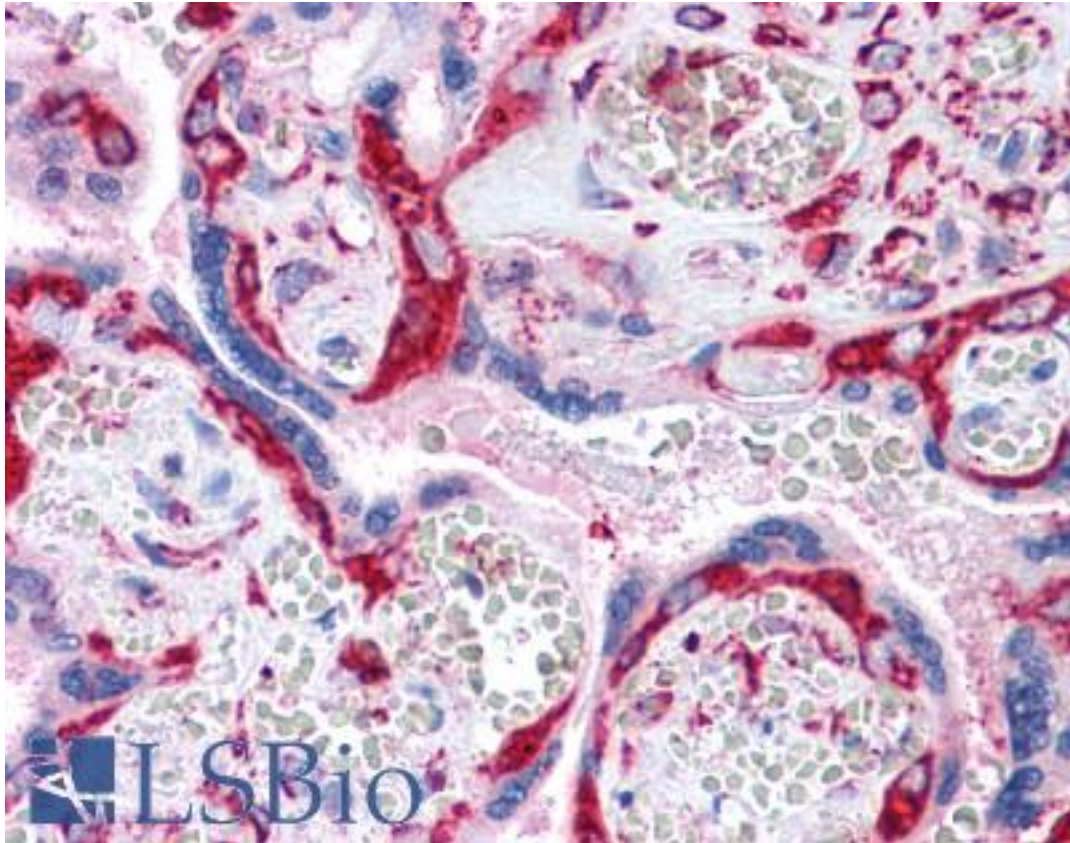


C4.4A / LYPD3 Rabbit anti-Human Polyclonal (Internal) Antibody - LS-A8940 - LSBio

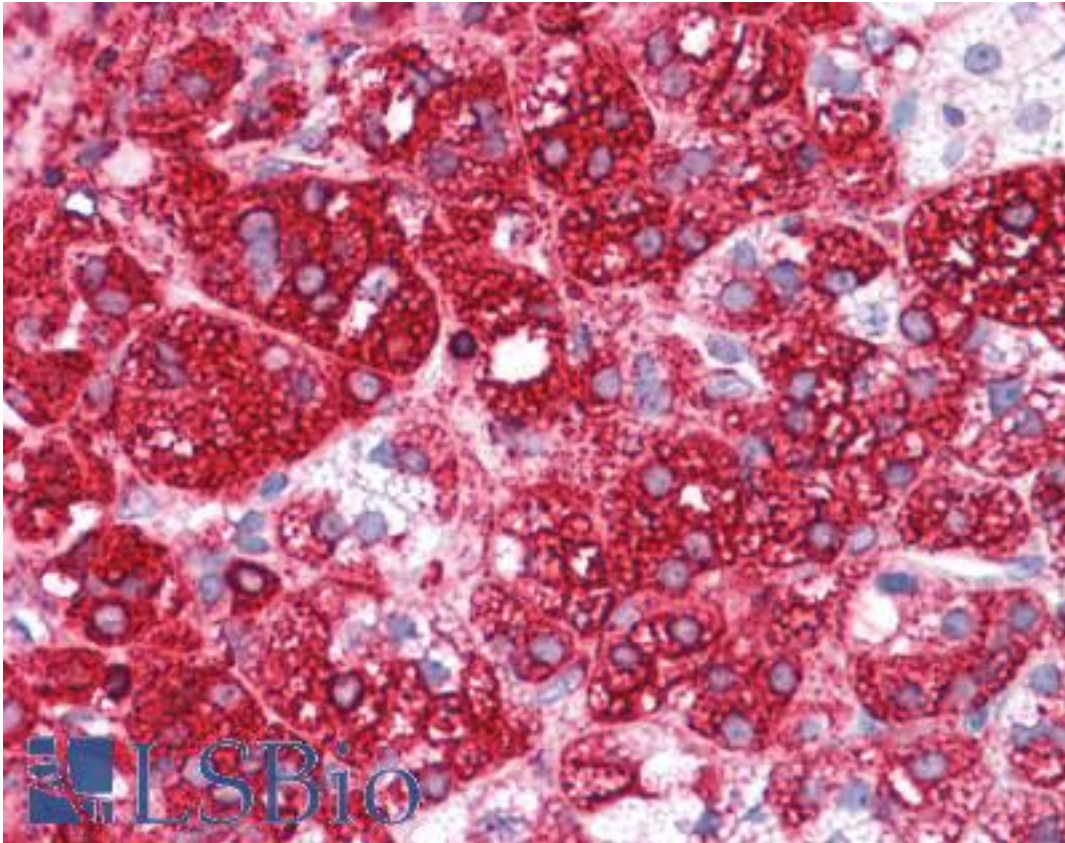
<b>CatalogID:</b>	LS-A8940
<b>Target:</b>	LY6/PLAUR domain containing 3 (LYPD3)
<b>Synonyms:</b>	LYPD3 Antibody, C4.4A Antibody, MIG-C4 Antibody, LY6/PLAUR domain containing 3 Antibody
<b>Host</b>	LYPD3 antibody was produced in Rabbit
<b>Clonality:</b>	Polyclonal
<b>Immunogen Species:</b>	C4.4A / LYPD3 antibody was raised against Human
<b>Antigen Type:</b>	Synthetic peptide
<b>Immunogen:</b>	C4.4A / LYPD3 antibody was raised against synthetic 14 amino acid peptide from internal region of human LYPD3. Percent identity with other species by BLAST analysis: Human, Gorilla, Gibbon (100%); Rabbit (93%); Marmoset, Dog, Panda, Horse (86%).
<b>Specificity:</b>	Human LYPD3. BLAST analysis of the peptide immunogen showed no homology with other human proteins.
<b>Epitope:</b>	Internal
<b>Reactivity:</b>	Human, Gorilla, Gibbon
<b>Predicted Reactivity:</b>	Rabbit
<b>Purification:</b>	Immunoaffinity purified
<b>Presentation:</b>	PBS, 0.1% sodium azide.
<b>Recommended Storage:</b>	Short term 4°C, long term aliquot and store at -20°C, avoid freeze thaw cycles.
<b>Uses:</b>	IHC - Paraffin (10 - 12.5 µg/ml) (Optimal dilution to be determined by the researcher)
<b>Size:</b>	50 µg
<b>Concentration:</b>	0.7 mg/ml

**Immunohistochemistry Image:**



Anti-LYPD3 antibody LS-A8940 IHC of human placenta. Immunohistochemistry of formalin-fixed, paraffin-embedded tissue after heat-induced antigen retrieval.

**Immunohistochemistry Image:**



Anti-LYPD3 antibody LS-A8940 IHC of human adrenal. Immunohistochemistry of formalin-fixed, paraffin-embedded tissue after heat-induced antigen retrieval.

**Requested From:**

Japan

Laboratory Reagent For In Vitro Research Use Only

Not for resale without prior written consent from LifeSpan BioSciences, Inc.

Created on 9/23/2014

© 2014 LifeSpan BioSciences