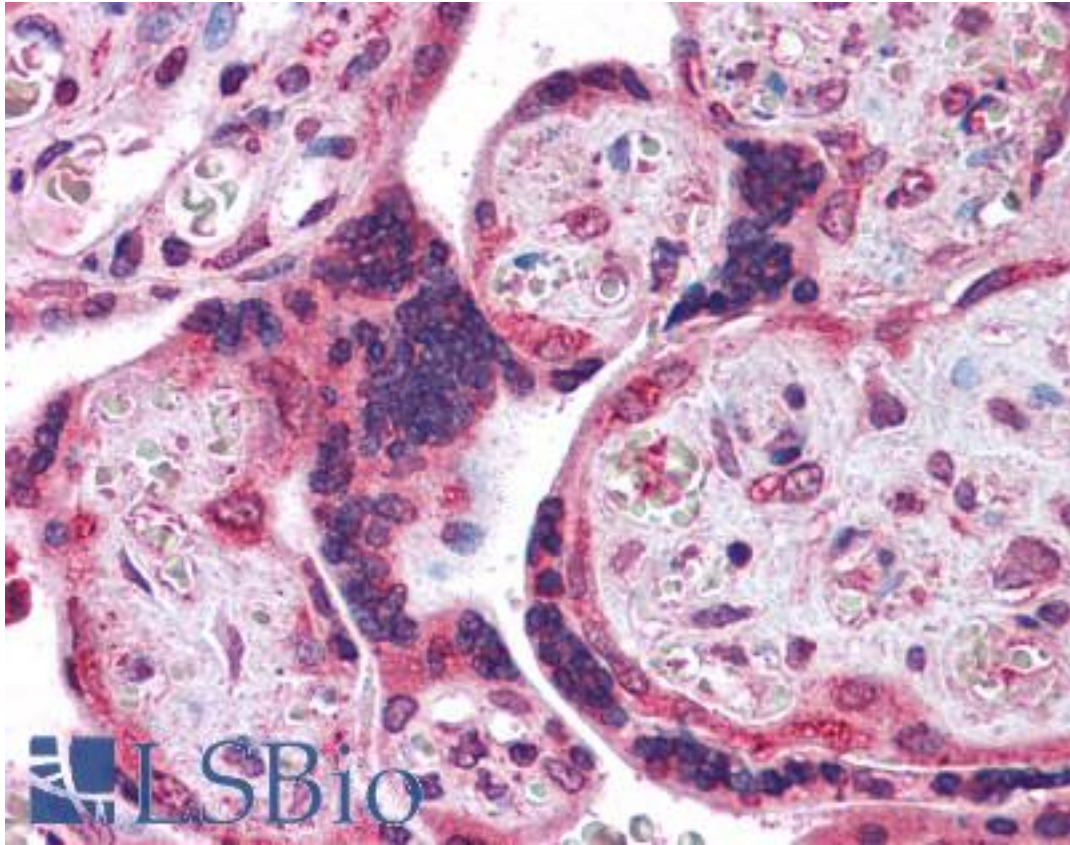


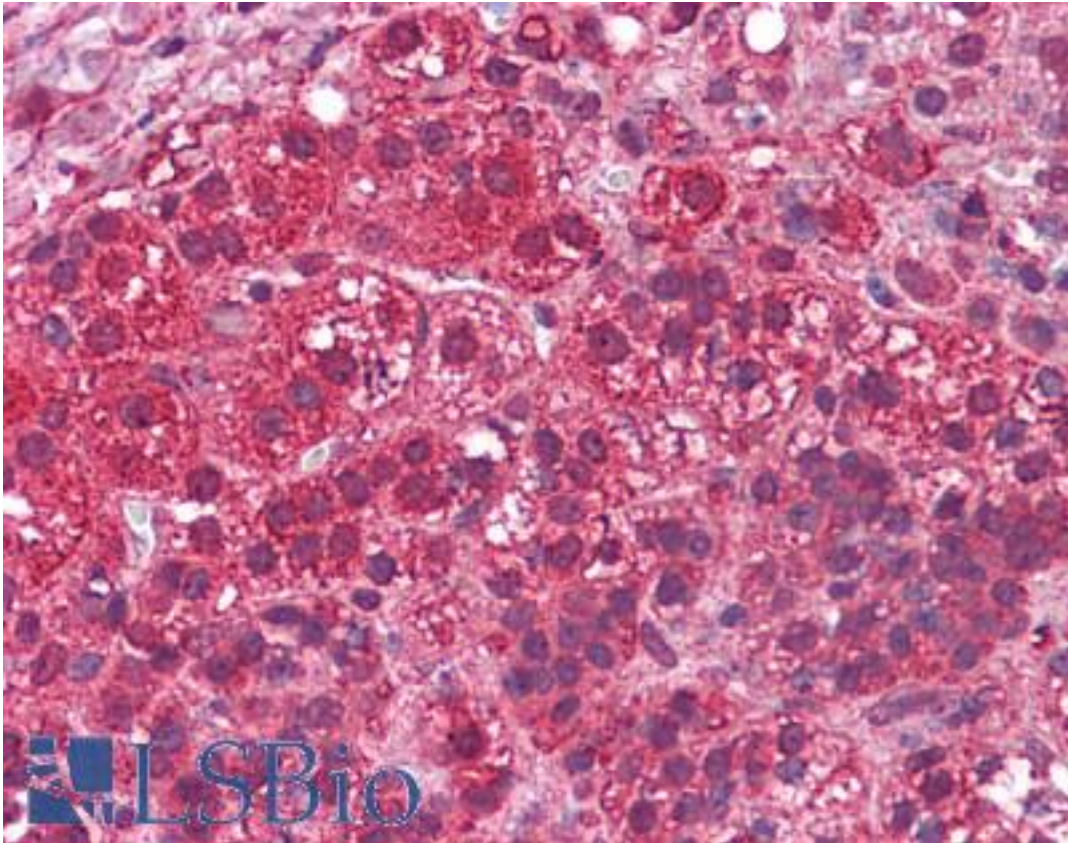
C4.4A / LYPD3 Rabbit anti-Human Polyclonal (N-Terminus) Antibody - LS-A8939 - LSBio	
CatalogID:	LS-A8939
Target:	LY6/PLAUR domain containing 3 (LYPD3)
Synonyms:	LYPD3 Antibody, C4.4A Antibody, MIG-C4 Antibody, LY6/PLAUR domain containing 3 Antibody
Host	LYPD3 antibody was produced in Rabbit
Clonality:	Polyclonal
Immunogen Species:	C4.4A / LYPD3 antibody was raised against Human
Antigen Type:	Synthetic peptide
Immunogen:	C4.4A / LYPD3 antibody was raised against synthetic 14 amino acid peptide from N-terminus of human LYPD3. Percent identity with other species by BLAST analysis: Human, Gorilla, Gibbon, Dog, Elephant, Horse, Rabbit (100%); Marmoset, Mouse, Rat, Panda, Pig (93%); Bovine (86%).
Specificity:	Human LYPD3. BLAST analysis of the peptide immunogen showed no homology with other human proteins.
Epitope:	N-Terminus
Reactivity:	Human, Gorilla, Gibbon, Dog, Horse, Rabbit
Predicted Reactivity:	Monkey, Mouse, Rat, Pig
Purification:	Immunoaffinity purified
Presentation:	PBS, 0.1% sodium azide.
Recommended Storage:	Short term 4°C, long term aliquot and store at -20°C, avoid freeze thaw cycles.
Uses:	IHC - Paraffin (10 - 12.5 µg/ml) (Optimal dilution to be determined by the researcher)
Size:	50 µg
Concentration:	1 mg/ml

Immunohistochemistry Image:



Anti-LYPD3 antibody LS-A8939 IHC of human placenta. Immunohistochemistry of formalin-fixed, paraffin-embedded tissue after heat-induced antigen retrieval.

Immunohistochemistry Image:



Anti-LYPD3 antibody LS-A8939 IHC of human adrenal. Immunohistochemistry of formalin-fixed, paraffin-embedded tissue after heat-induced antigen retrieval.

Requested From:

Japan

Laboratory Reagent For In Vitro Research Use Only

Not for resale without prior written consent from LifeSpan BioSciences, Inc.

Created on 9/23/2014

© 2014 LifeSpan BioSciences