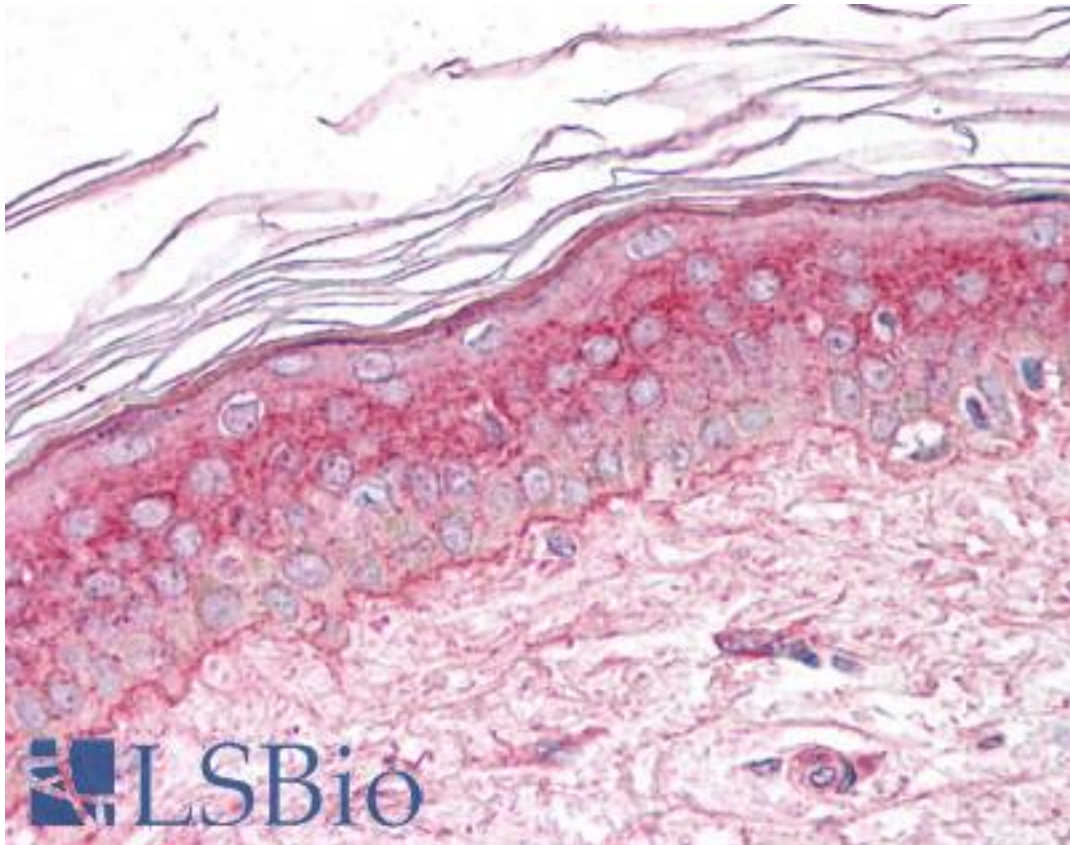


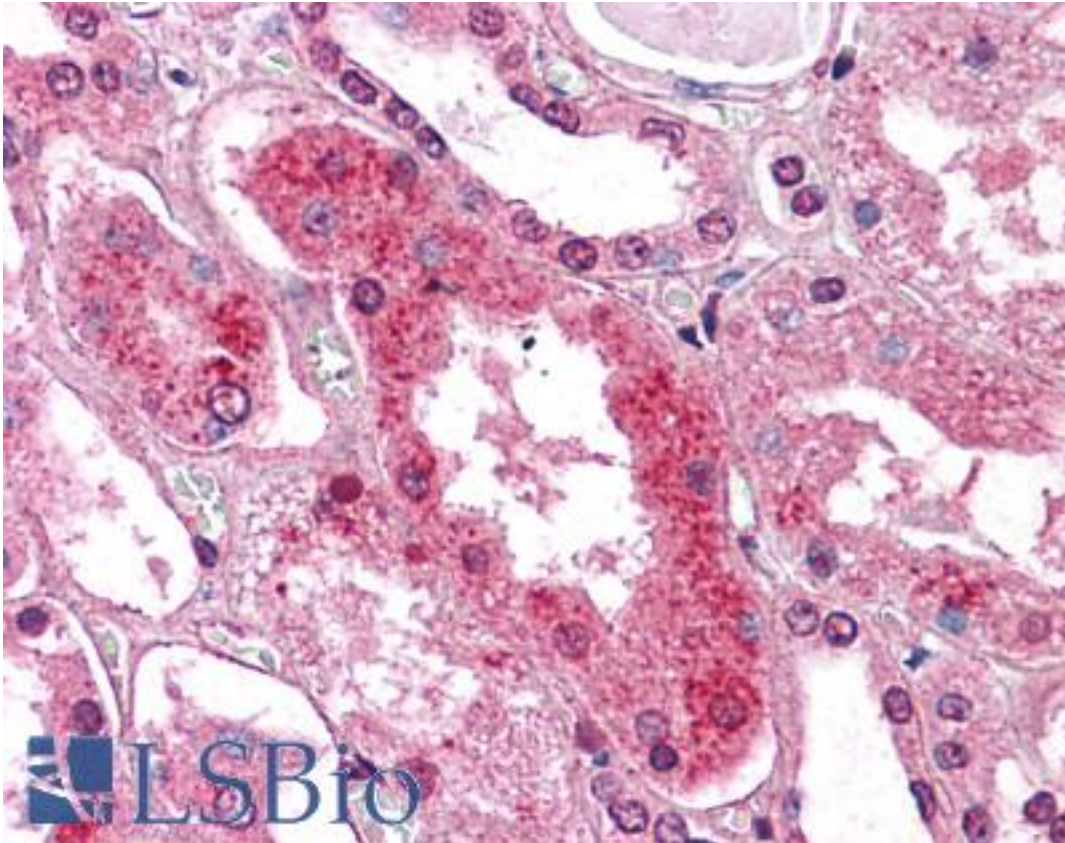
GM2A Rabbit anti-Human Polyclonal (C-Terminus) Antibody - LS-A8935 - LSBio	
CatalogID:	LS-A8935
Target:	GM2 ganglioside activator (GM2A)
Synonyms:	GM2A Antibody, Ganglioside GM2 activator Antibody, GM2 ganglioside activator Antibody, GM2-AP Antibody, SAP-3 Antibody
Host	GM2A antibody was produced in Rabbit
Clonality:	Polyclonal
Immunogen Species:	GM2A antibody was raised against Human
Antigen Type:	Synthetic peptide
Immunogen:	GM2A antibody was raised against synthetic 16 amino acid peptide from C-terminus of human GM2A. Percent identity with other species by BLAST analysis: Human, Gorilla, Gibbon (100%); Monkey (94%); Marmoset, Mouse, Rat, Bovine, Hamster, Elephant, Horse (81%).
Specificity:	Human GM2A. BLAST analysis of the peptide immunogen showed no homology with other human proteins.
Epitope:	C-Terminus
Reactivity:	Human, Gorilla, Gibbon
Predicted Reactivity:	Monkey
Purification:	Immunoaffinity purified
Presentation:	PBS, 0.1% sodium azide.
Recommended Storage:	Short term 4°C, long term aliquot and store at -20°C, avoid freeze thaw cycles.
Uses:	IHC - Paraffin (10 - 12.5 µg/ml) (Optimal dilution to be determined by the researcher)
Size:	50 µg
Concentration:	1 mg/ml

Immunohistochemistry Image:



Anti-GM2A antibody LS-A8935 IHC of human skin. Immunohistochemistry of formalin-fixed, paraffin-embedded tissue after heat-induced antigen retrieval.

Immunohistochemistry Image:



Anti-GM2A antibody LS-A8935 IHC of human kidney. Immunohistochemistry of formalin-fixed, paraffin-embedded tissue after heat-induced antigen retrieval.

Requested From:

Japan

Laboratory Reagent For In Vitro Research Use Only

Not for resale without prior written consent from LifeSpan BioSciences, Inc.

Created on 9/23/2014

© 2014 LifeSpan BioSciences