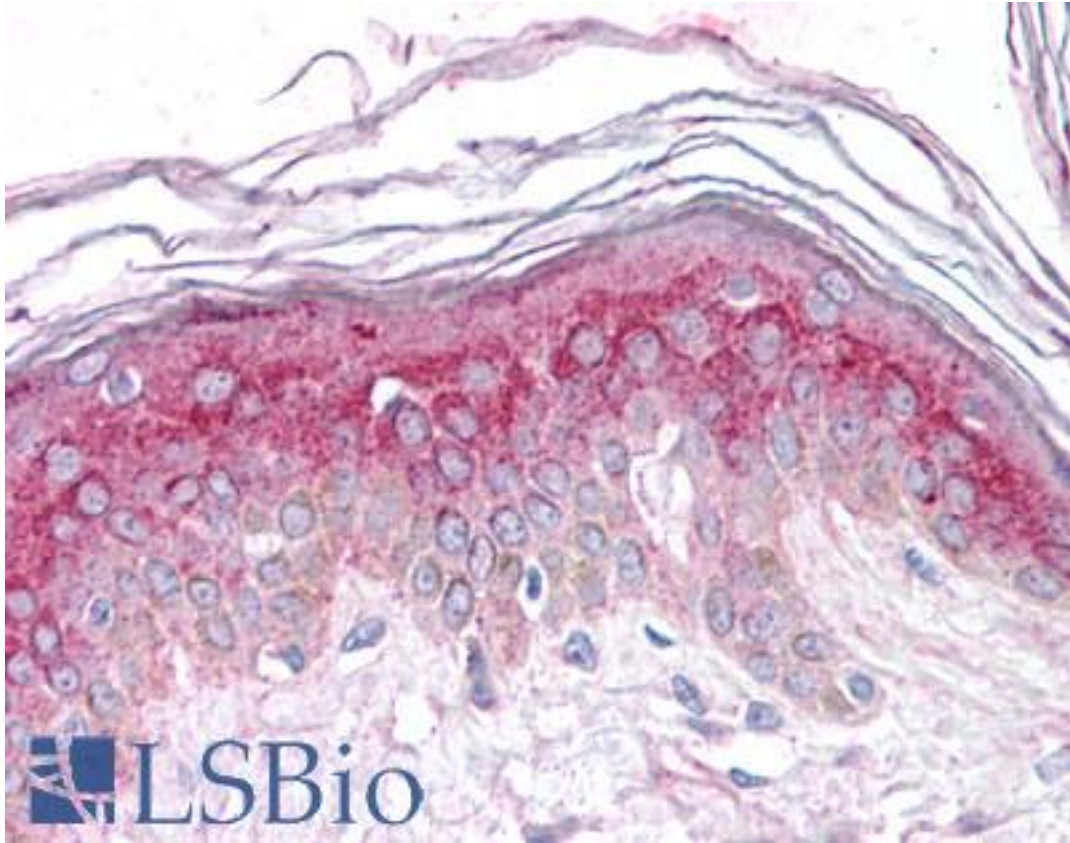


GM2A Rabbit anti-Human Polyclonal (N-Terminus) Antibody - LS-A8932 - LSBio

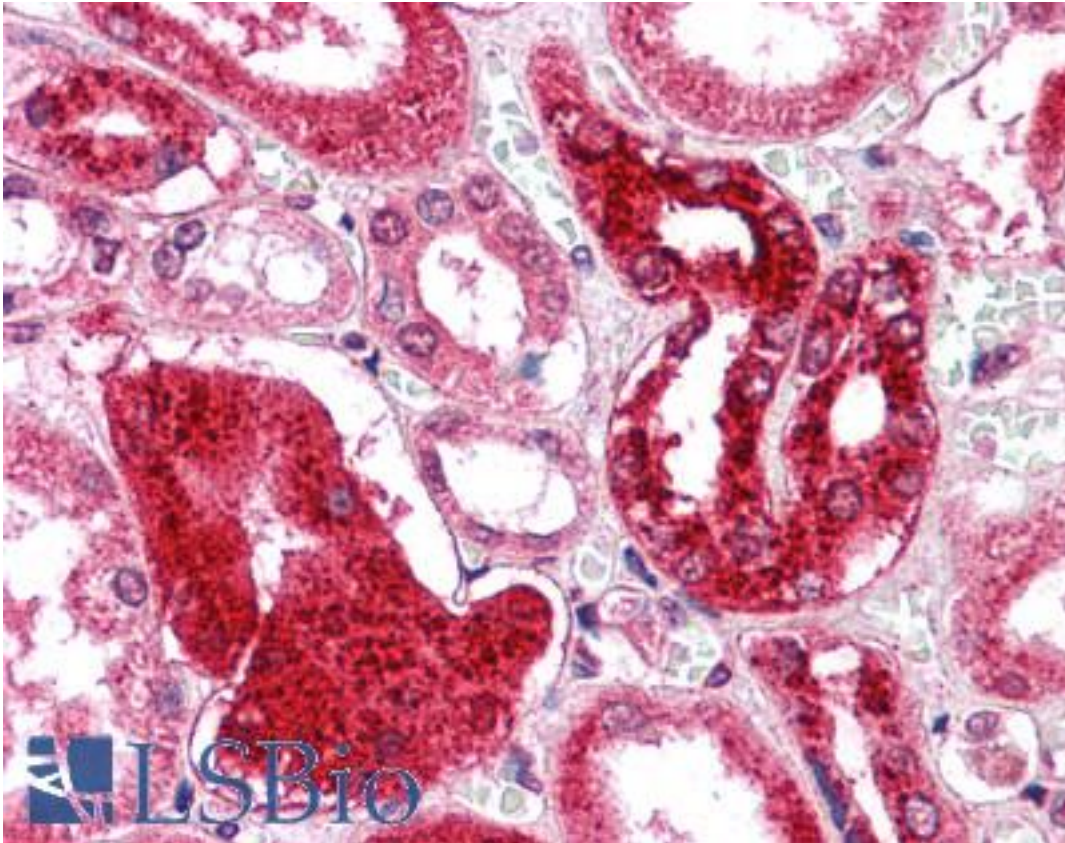
<b>CatalogID:</b>	LS-A8932
<b>Target:</b>	GM2 ganglioside activator (GM2A)
<b>Synonyms:</b>	GM2A Antibody, Ganglioside GM2 activator Antibody, GM2 ganglioside activator Antibody, GM2-AP Antibody, SAP-3 Antibody
<b>Host</b>	GM2A antibody was produced in Rabbit
<b>Clonality:</b>	Polyclonal
<b>Immunogen Species:</b>	GM2A antibody was raised against Human
<b>Antigen Type:</b>	Synthetic peptide
<b>Immunogen:</b>	GM2A antibody was raised against synthetic 17 amino acid peptide from N-terminus of human GM2A. Percent identity with other species by BLAST analysis: Human, Gorilla, Gibbon, Monkey (100%); Marmoset, Rat, Bovine, Cat, Elephant, Pig (88%); Mouse, Hamster, Panda, Horse, Platypus (82%).
<b>Specificity:</b>	Human GM2A. BLAST analysis of the peptide immunogen showed no homology with other human proteins, except NBR1 (53%).
<b>Epitope:</b>	N-Terminus
<b>Reactivity:</b>	Human, Gorilla, Gibbon, Monkey
<b>Purification:</b>	Immunoaffinity purified
<b>Presentation:</b>	PBS, 0.1% sodium azide.
<b>Recommended Storage:</b>	Short term 4°C, long term aliquot and store at -20°C, avoid freeze thaw cycles.
<b>Uses:</b>	IHC - Paraffin (5 - 7.5 µg/ml) (Optimal dilution to be determined by the researcher)
<b>Size:</b>	50 µg
<b>Concentration:</b>	1 mg/ml

**Immunohistochemistry Image:**



Anti-GM2A antibody LS-A8932 IHC of human skin. Immunohistochemistry of formalin-fixed, paraffin-embedded tissue after heat-induced antigen retrieval.

**Immunohistochemistry Image:**



Anti-GM2A antibody LS-A8932 IHC of human kidney. Immunohistochemistry of formalin-fixed, paraffin-embedded tissue after heat-induced antigen retrieval.

**Requested From:**

Japan

Laboratory Reagent For In Vitro Research Use Only

Not for resale without prior written consent from LifeSpan BioSciences, Inc.

Created on 9/23/2014

© 2014 LifeSpan BioSciences