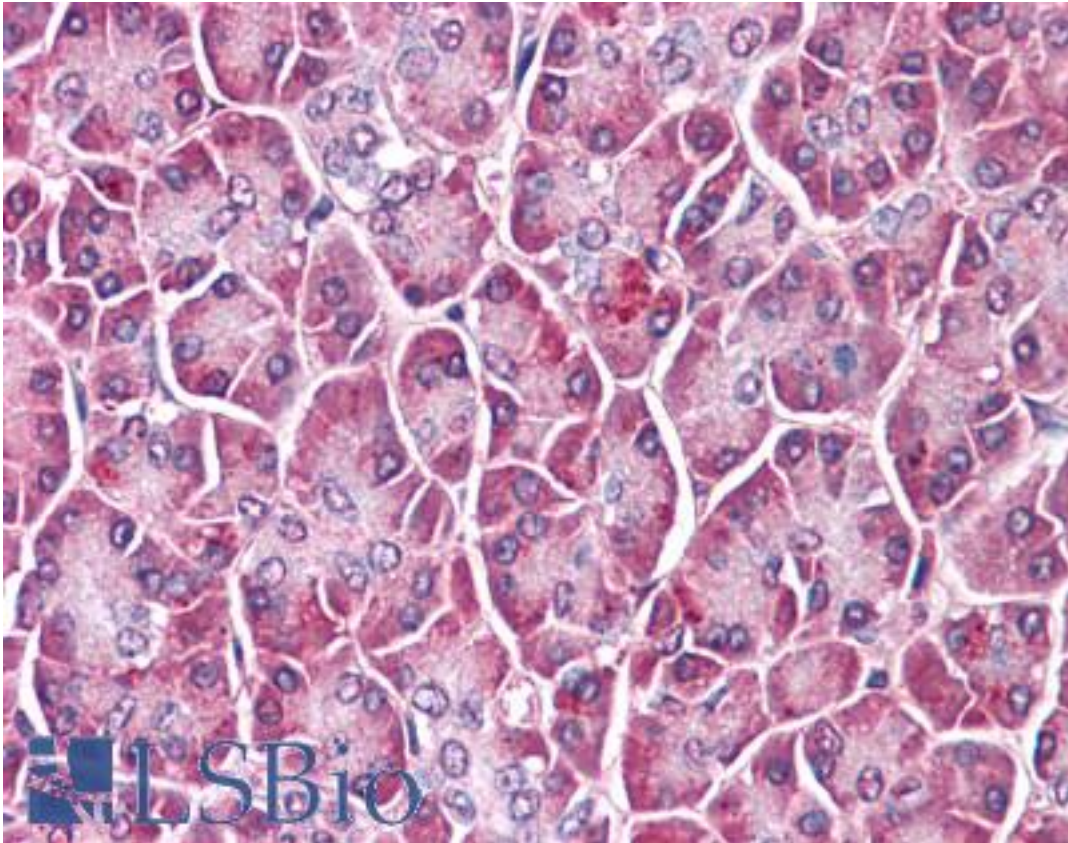


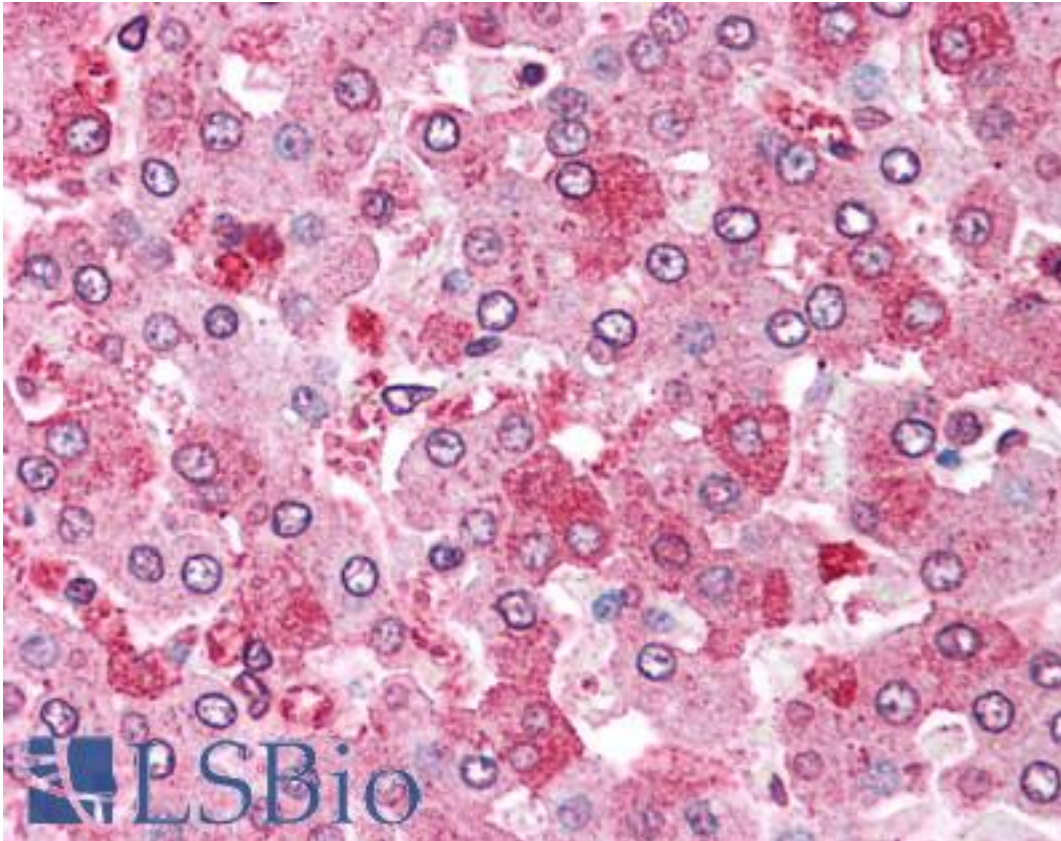
GPC4 / Glypican 4 Rabbit anti-Human Polyclonal (C-Terminus) Antibody - LS-A8927 - LSBio	
CatalogID:	LS-A8927
Target:	glypican 4 (GPC4)
Synonyms:	GPC4 Antibody, DJ900E8.1 (glypican 4) Antibody, Glypican 4 Antibody, Glypican proteoglycan 4 Antibody, Glypican-4 Antibody, K-glypican Antibody
Host	GPC4 antibody was produced in Rabbit
Clonality:	Polyclonal
Immunogen Species:	GPC4 / Glypican 4 antibody was raised against Human
Antigen Type:	Synthetic peptide
Immunogen:	GPC4 / Glypican 4 antibody was raised against synthetic 16 amino acid peptide from C-terminus of human GPC4 / Glypican 4. Percent identity with other species by BLAST analysis: Human, Gorilla, Monkey (100%); Gibbon, Marmoset, Rabbit (94%); Mouse, Rat, Bovine, Panda (88%); Hamster, Horse (81%).
Specificity:	Human GPC4 / Glypican 4. BLAST analysis of the peptide immunogen showed no homology with other human proteins, except PKD2L1 (44%).
Epitope:	C-Terminus
Reactivity:	Human, Gorilla
Predicted Reactivity:	Gibbon, Monkey, Rabbit
Purification:	Immunoaffinity purified
Presentation:	PBS, 0.1% sodium azide.
Recommended Storage:	Short term 4°C, long term aliquot and store at -20°C, avoid freeze thaw cycles.
Uses:	IHC - Paraffin (15 - 20 µg/ml) (Optimal dilution to be determined by the researcher)
Size:	50 µg
Concentration:	1 mg/ml

Immunohistochemistry Image:



Anti-GPC4 / Glypican 4 antibody LS-A8927 IHC of human pancreas. Immunohistochemistry of formalin-fixed, paraffin-embedded tissue after heat-induced antigen retrieval.

Immunohistochemistry Image:



Anti-GPC4 / Glypican 4 antibody LS-A8927 IHC of human liver. Immunohistochemistry of formalin-fixed, paraffin-embedded tissue after heat-induced antigen retrieval.

Requested From:

Japan

Laboratory Reagent For In Vitro Research Use Only

Not for resale without prior written consent from LifeSpan BioSciences, Inc.

Created on 9/23/2014

© 2014 LifeSpan BioSciences