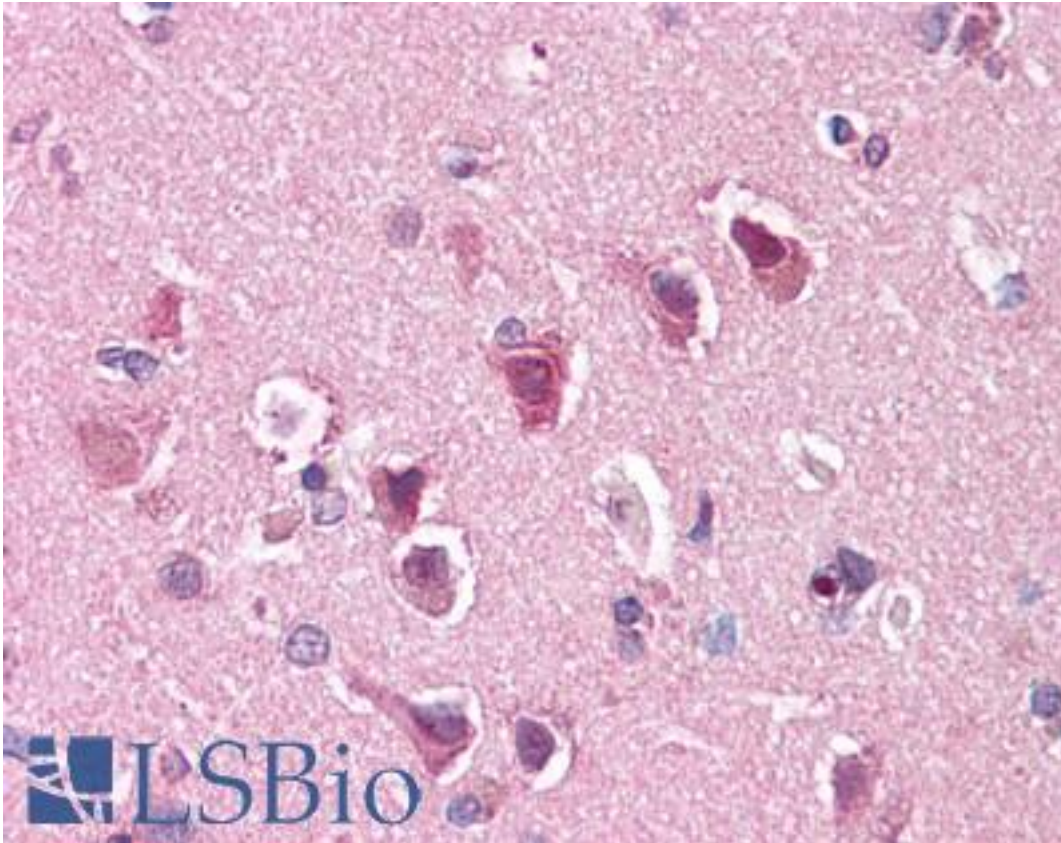


SLC29A1 / ENT1 Rabbit anti-Human Polyclonal (C-Terminus) Antibody - LS-A8926 - LSBio

CatalogID:	LS-A8926
Target:	solute carrier family 29 (equilibrative nucleoside transporter), member 1 (SLC29A1)
Synonyms:	SLC29A1 Antibody, ENT1 Antibody, HENT1 Antibody
Family / Subfamily:	Transporter / Equilibrative nucleoside transporter
Host	SLC29A1 antibody was produced in Rabbit
Clonality:	Polyclonal
Immunogen Species:	SLC29A1 / ENT1 antibody was raised against Human
Antigen Type:	Synthetic peptide
Immunogen:	SLC29A1 / ENT1 antibody was raised against synthetic 15 amino acid peptide from C-terminus of human ENT1. Percent identity with other species by BLAST analysis: Human, Gorilla, Orangutan, Gibbon, Monkey, Marmoset, Mouse, Rat, Dog, Bat, Bovine, Hamster, Elephant, Panda, Horse, Rabbit (100%); Goat, Pig (93%); Opossum, Pufferfish, Zebrafish, Stickleback (87%); Chicken, Xenopus (80%).
Specificity:	Human ENT1. BLAST analysis of the peptide immunogen showed no homology with other human proteins.
Epitope:	C-Terminus
Reactivity:	Human, Gorilla, Orangutan, Gibbon, Monkey, Mouse, Rat, Bat, Bovine, Dog, Hamster, Horse, Rabbit
Predicted Reactivity:	Goat, Pig
Purification:	Immunoaffinity purified
Presentation:	PBS, 0.1% sodium azide.
Recommended Storage:	Short term 4°C, long term aliquot and store at -20°C, avoid freeze thaw cycles.
Uses:	IHC - Paraffin (10 - 12.5 µg/ml) (Optimal dilution to be determined by the researcher)
Size:	50 µg
Concentration:	1 mg/ml

Immunohistochemistry Image:



Anti-ENT1 antibody LS-A8926 IHC of human brain, cortex. Immunohistochemistry of formalin-fixed, paraffin-embedded tissue after heat-induced antigen retrieval.

Requested From:

Japan

Laboratory Reagent For In Vitro Research Use Only

Not for resale without prior written consent from LifeSpan BioSciences, Inc.

Created on 9/23/2014

© 2014 LifeSpan BioSciences