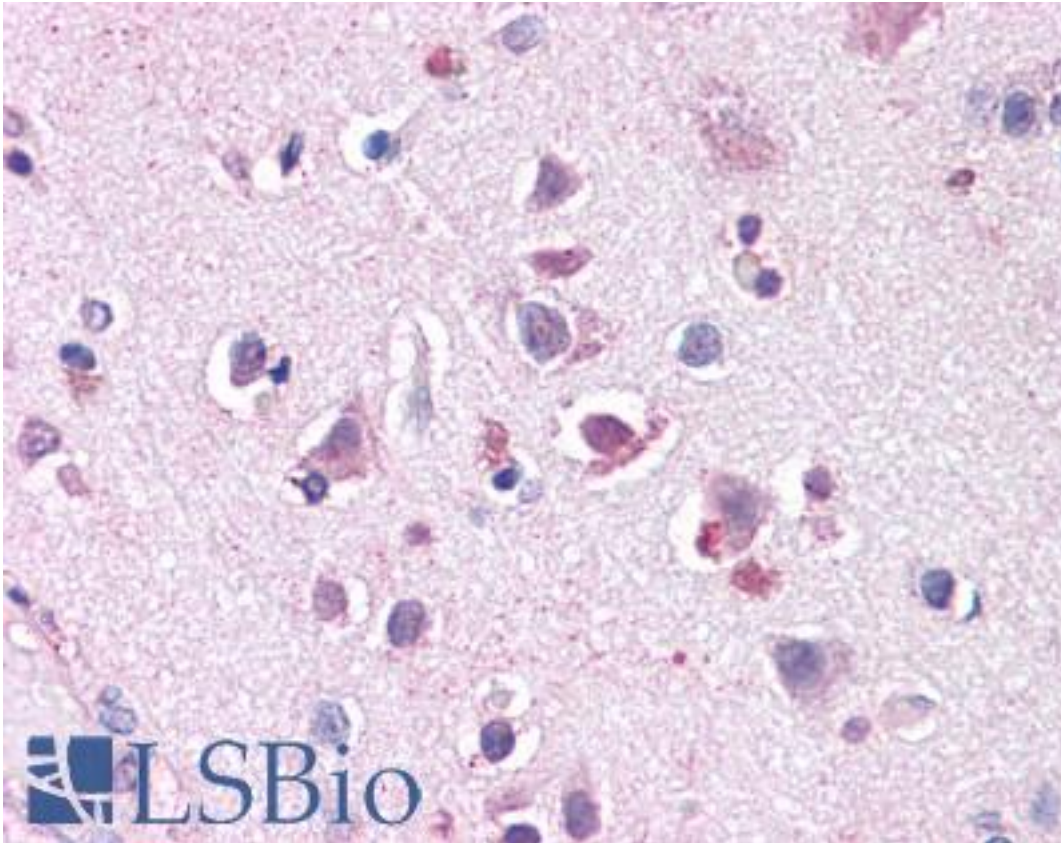


SLC29A1 / ENT1 Rabbit anti-Human Polyclonal (Internal) Antibody - LS-A8924 - LSBio

CatalogID:	LS-A8924
Target:	solute carrier family 29 (equilibrative nucleoside transporter), member 1 (SLC29A1)
Synonyms:	SLC29A1 Antibody, ENT1 Antibody, HENT1 Antibody
Family / Subfamily:	Transporter / Equilibrative nucleoside transporter
Host	SLC29A1 antibody was produced in Rabbit
Clonality:	Polyclonal
Immunogen Species:	SLC29A1 / ENT1 antibody was raised against Human
Antigen Type:	Synthetic peptide
Immunogen:	SLC29A1 / ENT1 antibody was raised against synthetic 16 amino acid peptide from internal region of human ENT1. Percent identity with other species by BLAST analysis: Human, Chimpanzee, Gorilla, Orangutan, Gibbon, Monkey, Marmoset (100%); Galago, Horse, Rabbit, Guinea pig (81%).
Specificity:	Human ENT1. BLAST analysis of the peptide immunogen showed no homology with other human proteins, except TIGD3 (56%).
Epitope:	Internal
Reactivity:	Human, Chimpanzee, Gorilla, Orangutan, Gibbon, Monkey
Purification:	Immunoaffinity purified
Presentation:	PBS, 0.1% sodium azide.
Recommended Storage:	Long term: -70°C; Short term: +4°C
Uses:	IHC - Paraffin (15 - 20 µg/ml) (Optimal dilution to be determined by the researcher)
Size:	50 µg
Concentration:	1 mg/ml

Immunohistochemistry Image:



Anti-ENT1 antibody LS-A8924 IHC of human brain, cortex. Immunohistochemistry of formalin-fixed, paraffin-embedded tissue after heat-induced antigen retrieval.

Requested From:

Japan

Laboratory Reagent For In Vitro Research Use Only

Not for resale without prior written consent from LifeSpan BioSciences, Inc.

Created on 9/23/2014

© 2014 LifeSpan BioSciences