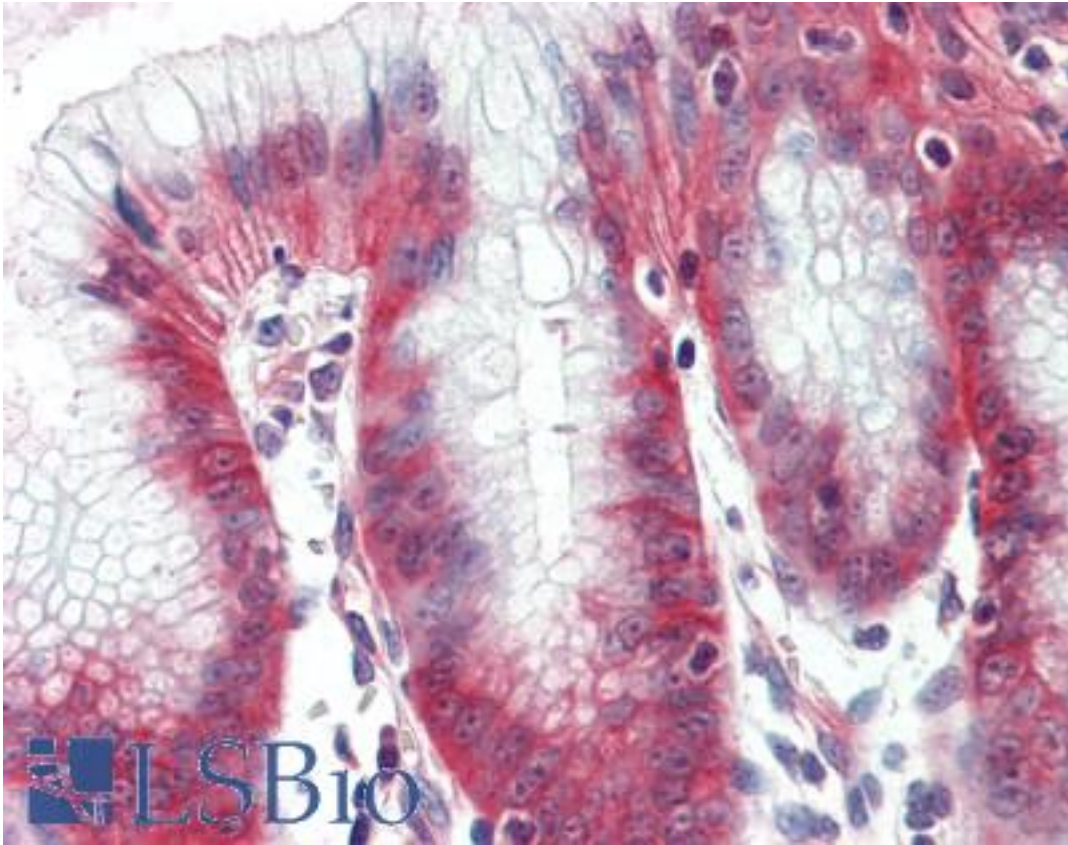


**SLC12A2 / NKCC1 Rabbit anti-Human Polyclonal (Internal) Antibody - LS-A8905 - LSBio**

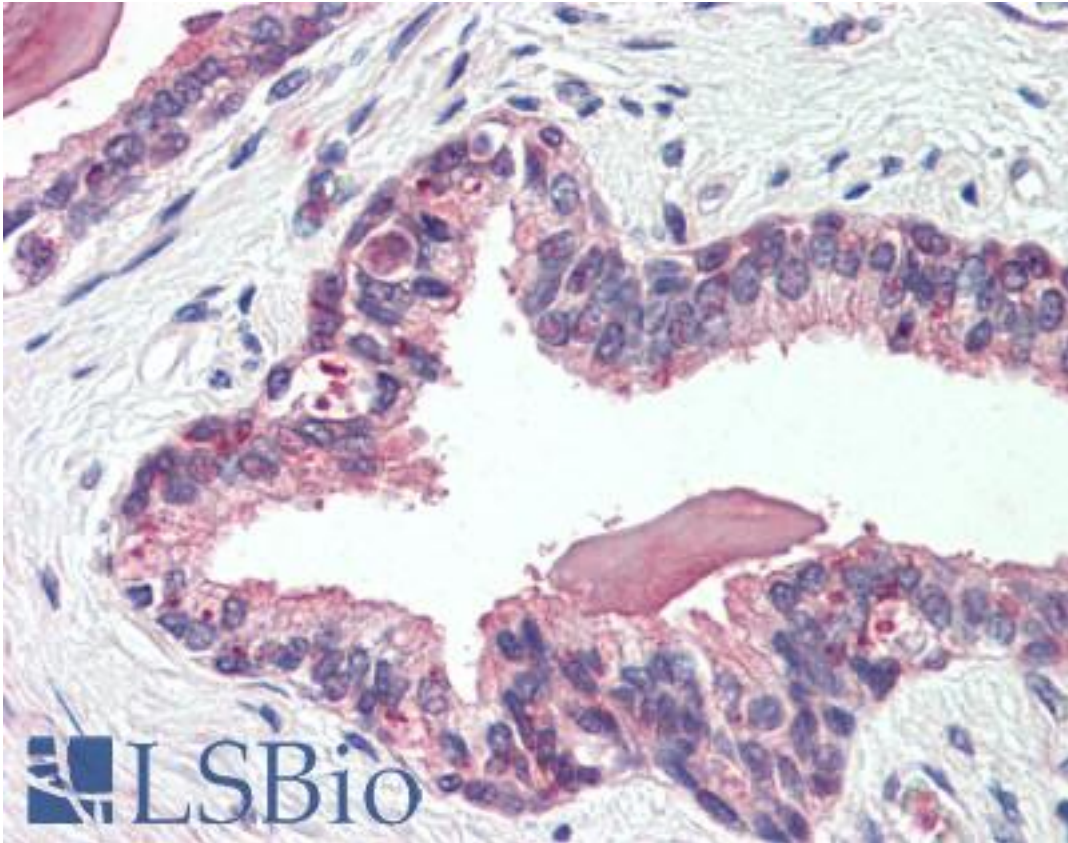
<b>CatalogID:</b>	LS-A8905
<b>Target:</b>	solute carrier family 12 (sodium/potassium/chloride transporter), member 2 (SLC12A2)
<b>Synonyms:</b>	SLC12A2 Antibody, Basolateral Na-K-Cl symporter Antibody, BSC2 Antibody, MBSC2 Antibody, NKCC1 Antibody, Sy-ns Antibody, BSC Antibody
<b>Family / Subfamily:</b>	Transporter / Cation:chloride symporter
<b>Host</b>	SLC12A2 antibody was produced in Rabbit
<b>Clonality:</b>	Polyclonal
<b>Immunogen Species:</b>	SLC12A2 / NKCC1 antibody was raised against Human
<b>Antigen Type:</b>	Synthetic peptide
<b>Immunogen:</b>	SLC12A2 / NKCC1 antibody was raised against synthetic 15 amino acid peptide from internal region of human SLC12A2 / NKCC1. Percent identity with other species by BLAST analysis: Human, Chimpanzee, Gorilla, Orangutan, Gibbon, Monkey, Marmoset, Mouse, Rat, Ferret, Elephant, Panda, Bovine, Dog, Horse, Pig, Opossum, Guinea pig (100%); Bat (93%).
<b>Specificity:</b>	Human SLC12A2 / NKCC1. BLAST analysis of the peptide immunogen showed no homology with other human proteins.
<b>Epitope:</b>	Internal
<b>Reactivity:</b>	Human, Chimpanzee, Gorilla, Orangutan, Gibbon, Monkey, Mouse, Rat, Bovine, Dog, Guinea pig, Horse, Pig
<b>Predicted Reactivity:</b>	Bat
<b>Purification:</b>	Immunoaffinity purified
<b>Presentation:</b>	PBS, 0.1% sodium azide.
<b>Recommended Storage:</b>	Long term: -70°C; Short term: +4°C
<b>Uses:</b>	IHC - Paraffin (5 - 10 µg/ml) (Optimal dilution to be determined by the researcher)
<b>Size:</b>	50 µg
<b>Concentration:</b>	1 mg/ml

**Immunohistochemistry Image:**



Human, Stomach: Formalin-Fixed Paraffin-Embedded (FFPE)

**Immunohistochemistry Image:**



Human, Prostate: Formalin-Fixed Paraffin-Embedded (FFPE)

**Requested From:**

Japan

Laboratory Reagent For In Vitro Research Use Only

Not for resale without prior written consent from LifeSpan BioSciences, Inc.

Created on 9/23/2014

© 2014 LifeSpan BioSciences