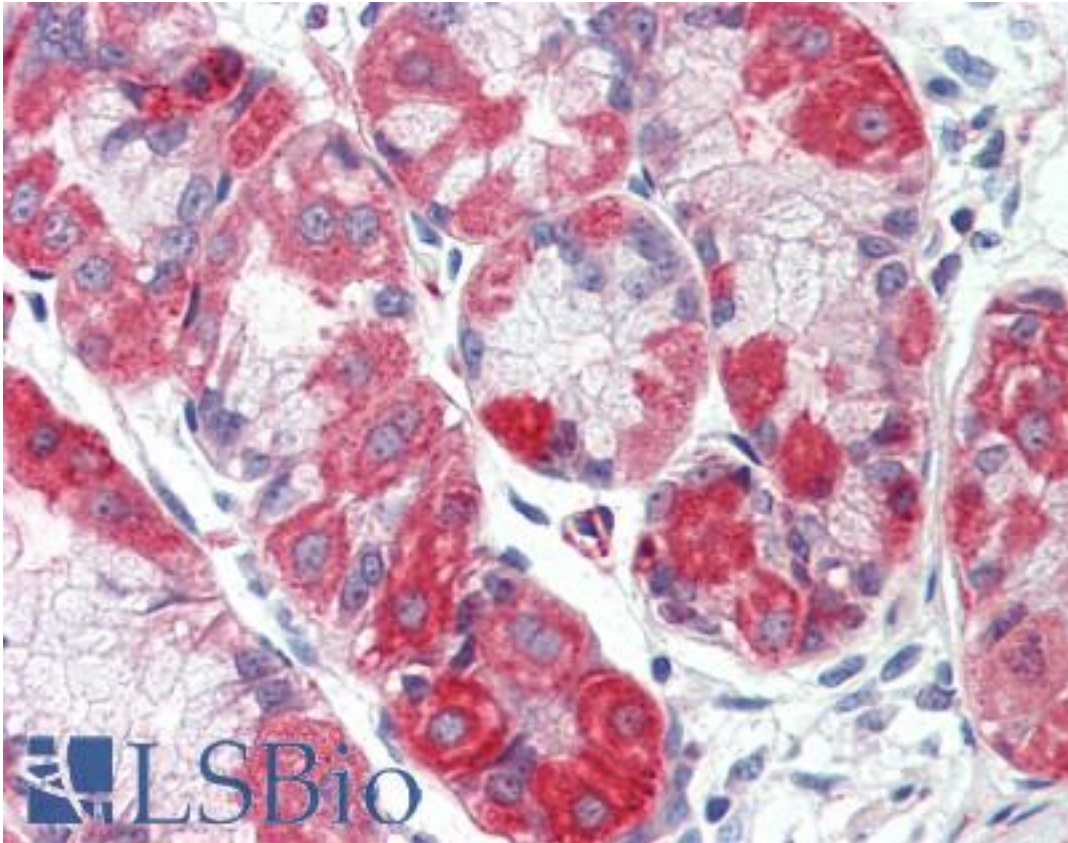


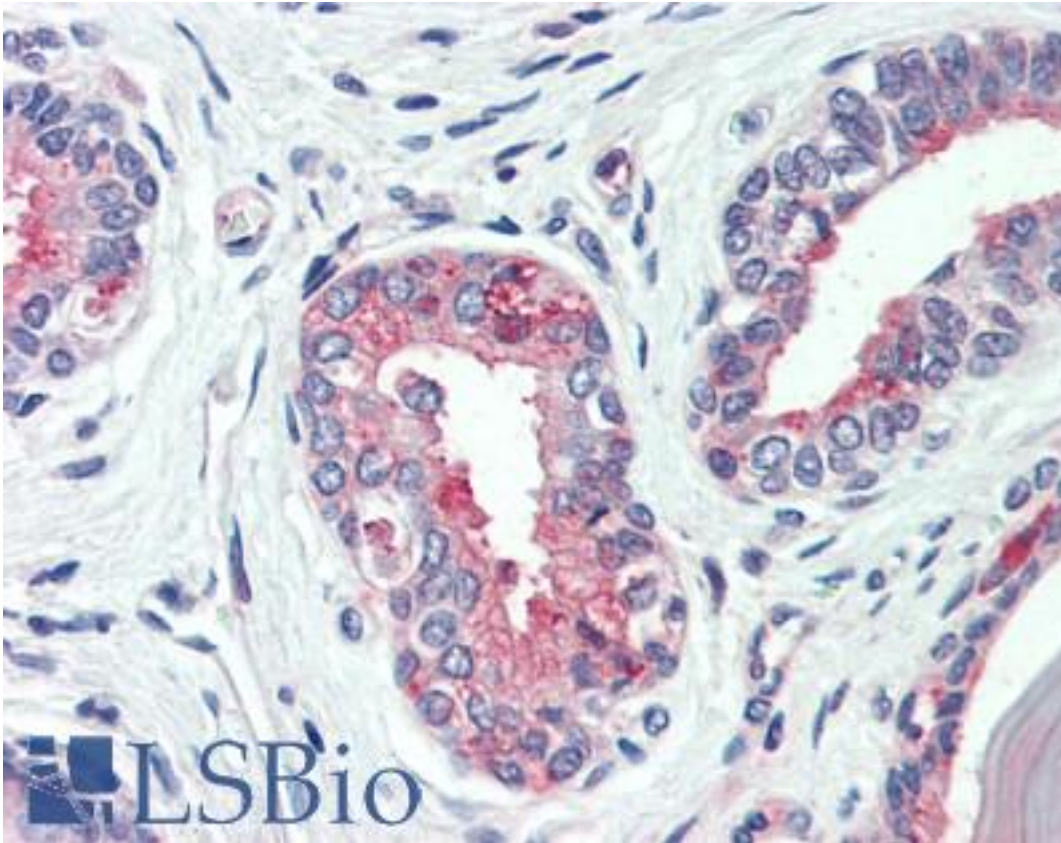
| SLC12A2 / NKCC1 Rabbit anti-Human Polyclonal (C-Terminus) Antibody - LS-A8904 - LSBio | |
|---|--|
| CatalogID: | LS-A8904 |
| Target: | solute carrier family 12 (sodium/potassium/chloride transporter), member 2 (SLC12A2) |
| Synonyms: | SLC12A2 Antibody, Basolateral Na-K-Cl symporter Antibody, BSC2 Antibody, MBSC2 Antibody, NKCC1 Antibody, Sy-ns Antibody, BSC Antibody |
| Family / Subfamily: | Transporter / Cation:chloride symporter |
| Host | SLC12A2 antibody was produced in Rabbit |
| Clonality: | Polyclonal |
| Immunogen Species: | SLC12A2 / NKCC1 antibody was raised against Human |
| Antigen Type: | Synthetic peptide |
| Immunogen: | SLC12A2 / NKCC1 antibody was raised against synthetic 17 amino acid peptide from C-terminus of human SLC12A2 / NKCC1. Percent identity with other species by BLAST analysis: Human, Gibbon, Monkey, Marmoset, Mouse, Rat, Ferret, Bovine, Dog, Bat, Hamster, Panda, Horse, Pig (100%); Elephant, Lizard (94%); Opossum, Chicken (88%); Turkey (82%). |
| Specificity: | Human SLC12A2 / NKCC1. BLAST analysis of the peptide immunogen showed no homology with other human proteins, except CDR2 (41%). |
| Epitope: | C-Terminus |
| Reactivity: | Human, Gibbon, Monkey, Mouse, Rat, Bat, Bovine, Dog, Hamster, Horse, Pig |
| Purification: | Immunoaffinity purified |
| Presentation: | PBS, 0.1% sodium azide. |
| Recommended Storage: | Long term: -70°C; Short term: +4°C |
| Uses: | IHC - Paraffin (5 - 10 µg/ml) (Optimal dilution to be determined by the researcher) |
| Size: | 50 µg |
| Concentration: | 1 mg/ml |

Immunohistochemistry Image:



Anti-SLC12A2 / NKCC1 antibody LS-A8904 IHC of human stomach. Immunohistochemistry of formalin-fixed, paraffin-embedded tissue after heat-induced antigen retrieval.

Immunohistochemistry Image:



Anti-SLC12A2 / NKCC1 antibody LS-A8904 IHC of human prostate. human.
Immunohistochemistry of formalin-fixed, paraffin-embedded tissue after heat-induced antigen retrieval.

Requested From:

Japan

Laboratory Reagent For In Vitro Research Use Only

Not for resale without prior written consent from LifeSpan BioSciences, Inc.

Created on 9/23/2014

© 2014 LifeSpan BioSciences