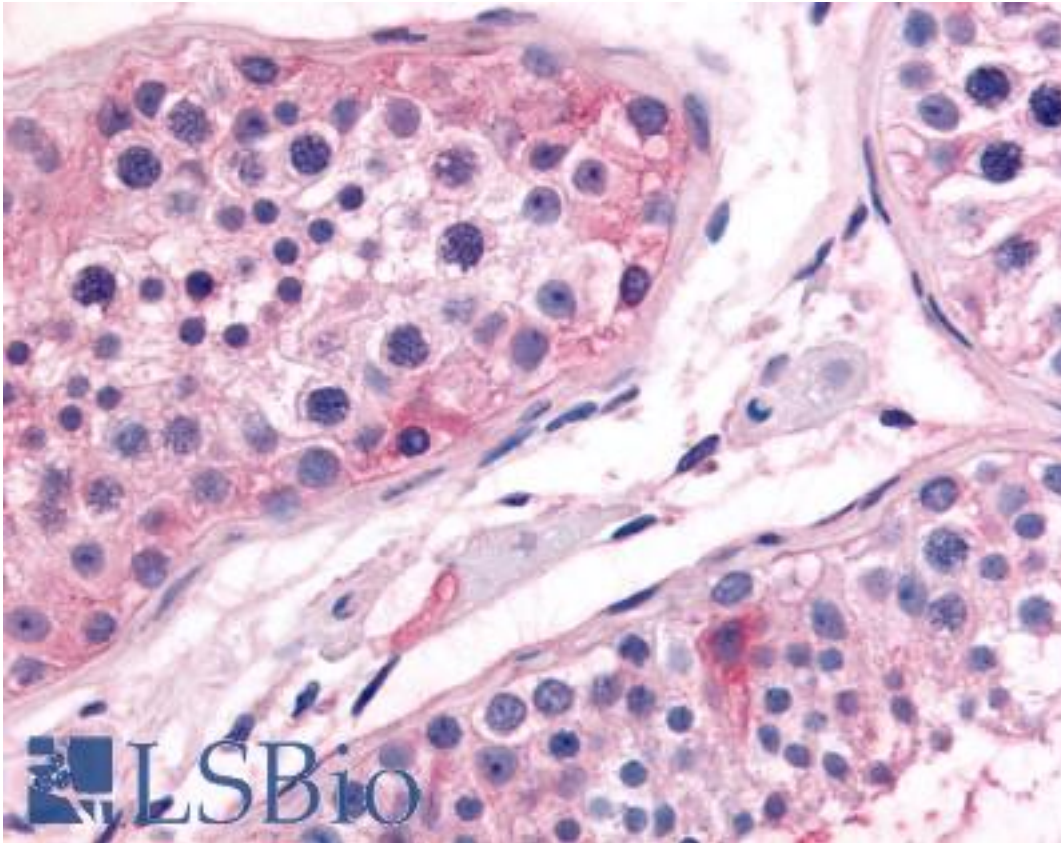


PGES / PTGES Rabbit anti-Human Polyclonal (N-Terminus) Antibody - LS-A8896 - LSBio	
CatalogID:	LS-A8896
Target:	prostaglandin E synthase (PTGES)
Synonyms:	PTGES Antibody, MGST1-L1 Antibody, MGST1-like 1 Antibody, MPGES Antibody, MPGES-1 Antibody, PGES Antibody, PIG12 Antibody, PP102 Antibody, TP53I12 Antibody, MGST1L1 Antibody, MPGES1 Antibody, PP1294 Antibody, MGST-IV Antibody, p53-induced gene 12 protein Antibody, Prostaglandin E synthase Antibody
Host	PTGES antibody was produced in Rabbit
Clonality:	Polyclonal
Immunogen Species:	PGES / PTGES antibody was raised against Human
Antigen Type:	Synthetic peptide
Immunogen:	PGES / PTGES antibody was raised against synthetic 14 amino acid peptide from near N-terminus of human PTGES. Percent identity with other species by BLAST analysis: Human, Gorilla, Gibbon, Monkey, Marmoset, Rat, Bovine, Dog, Elephant, Panda, Rabbit, Horse, Pig, Opossum, Turkey, Chicken, Platypus, Pufferfish, Zebrafish, Stickleback (100%); Mouse, Xenopus, Pike (93%).
Specificity:	Human PTGES. BLAST analysis of the peptide immunogen showed no homology with other human proteins.
Epitope:	N-Terminus
Reactivity:	Human, Gorilla, Gibbon, Monkey, Rat, Bovine, Dog, Horse, Pig, Rabbit, Chicken, Zebrafish
Predicted Reactivity:	Mouse, Xenopus
Purification:	Immunoaffinity purified
Presentation:	PBS, 0.1% sodium azide.
Recommended Storage:	Long term: -70°C; Short term: +4°C
Usage Summary:	Immunohistochemistry: LS-A8896 was validated for use in immunohistochemistry on a panel of 21 formalin-fixed, paraffin-embedded (FFPE) human tissues after heat induced antigen retrieval in pH 6.0 citrate buffer. After incubation with the primary antibody, slides were incubated with biotinylated secondary antibody, followed by alkaline phosphatase-streptavidin and chromogen. The stained slides were evaluated by a pathologist to confirm staining specificity. The optimal working concentration for LS-A8896 was determined to be 10 ug/ml.
Uses:	IHC - Paraffin (10 µg/ml) (Optimal dilution to be determined by the researcher)
Size:	50 µg
Concentration:	1 mg/ml

Immunohistochemistry Image:



Anti-PTGES antibody LS-A8896 IHC of human testis. Immunohistochemistry of formalin-fixed, paraffin-embedded tissue after heat-induced antigen retrieval.

Requested From:

Japan

Laboratory Reagent For In Vitro Research Use Only

Not for resale without prior written consent from LifeSpan BioSciences, Inc.

Created on 9/23/2014

© 2014 LifeSpan BioSciences