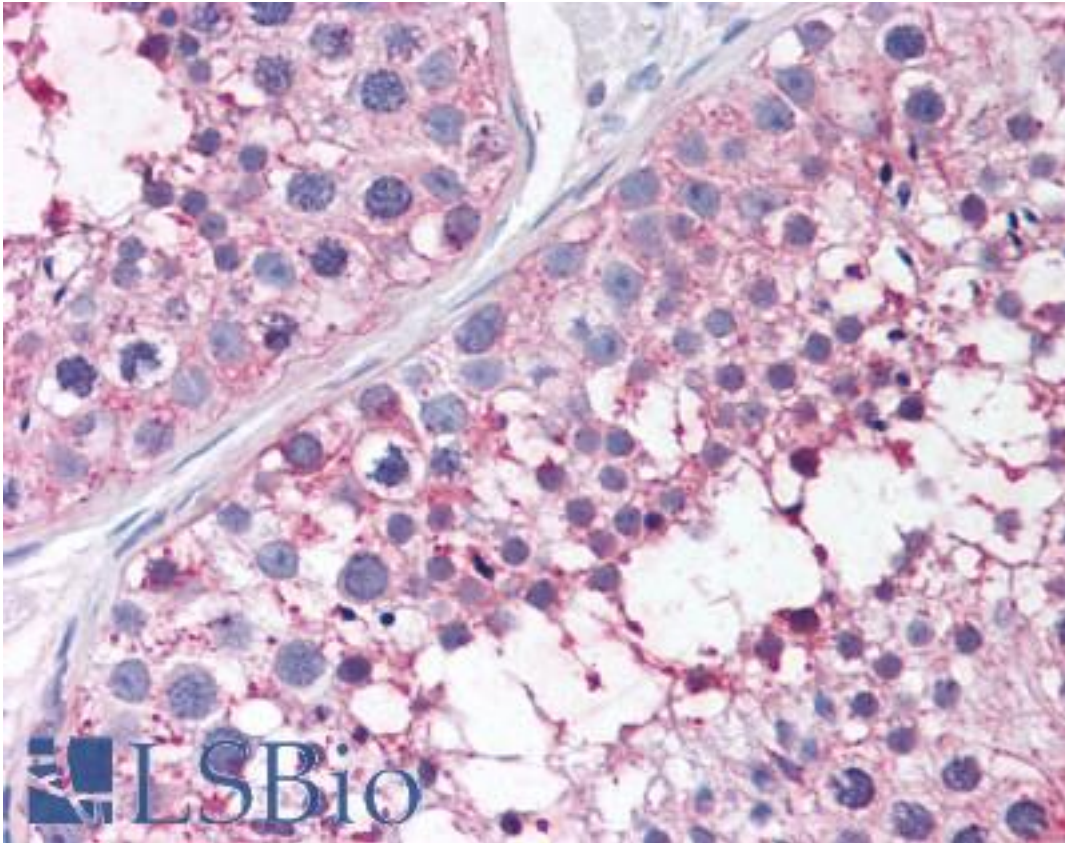


PGES / PTGES Rabbit anti-Human Polyclonal (N-Terminus) Antibody - LS-A8894 - LSBio

CatalogID:	LS-A8894
Target:	prostaglandin E synthase (PTGES)
Synonyms:	PTGES Antibody, MGST1-L1 Antibody, MGST1-like 1 Antibody, MPGES Antibody, MPGES-1 Antibody, PGES Antibody, PIG12 Antibody, PP102 Antibody, TP53I12 Antibody, MGST1L1 Antibody, MPGES1 Antibody, PP1294 Antibody, MGST-IV Antibody, p53-induced gene 12 protein Antibody, Prostaglandin E synthase Antibody
Host	PTGES antibody was produced in Rabbit
Clonality:	Polyclonal
Immunogen Species:	PGES / PTGES antibody was raised against Human
Antigen Type:	Synthetic peptide
Immunogen:	PGES / PTGES antibody was raised against synthetic 16 amino acid peptide from N-Terminus of human PTGES. Percent identity with other species by BLAST analysis: Human, Gorilla, Gibbon, Monkey, Marmoset, Mouse, Rat, Elephant, Rabbit, Pig (100%); Hamster, Bovine (94%); Dog, Horse, Turkey, Chicken (88%); Pike (81%).
Specificity:	Human PTGES. BLAST analysis of the peptide immunogen showed no homology with other human proteins.
Epitope:	N-Terminus
Reactivity:	Human, Gorilla, Gibbon, Monkey, Mouse, Rat, Pig, Rabbit
Predicted Reactivity:	Bovine, Hamster
Purification:	Immunoaffinity purified
Presentation:	PBS, 0.1% sodium azide.
Recommended Storage:	Store at 4°C for short term applications. For long term storage, aliquot and store at -20°C.
Uses:	IHC - Paraffin (5 µg/ml) (Optimal dilution to be determined by the researcher)
Size:	50 µg
Concentration:	1 mg/ml

Immunohistochemistry Image:



Anti-PTGES antibody LS-A8894 IHC of human testis. Immunohistochemistry of formalin-fixed, paraffin-embedded tissue after heat-induced antigen retrieval.

Requested From:

Japan

Laboratory Reagent For In Vitro Research Use Only

Not for resale without prior written consent from LifeSpan BioSciences, Inc.

Created on 9/23/2014

© 2014 LifeSpan BioSciences