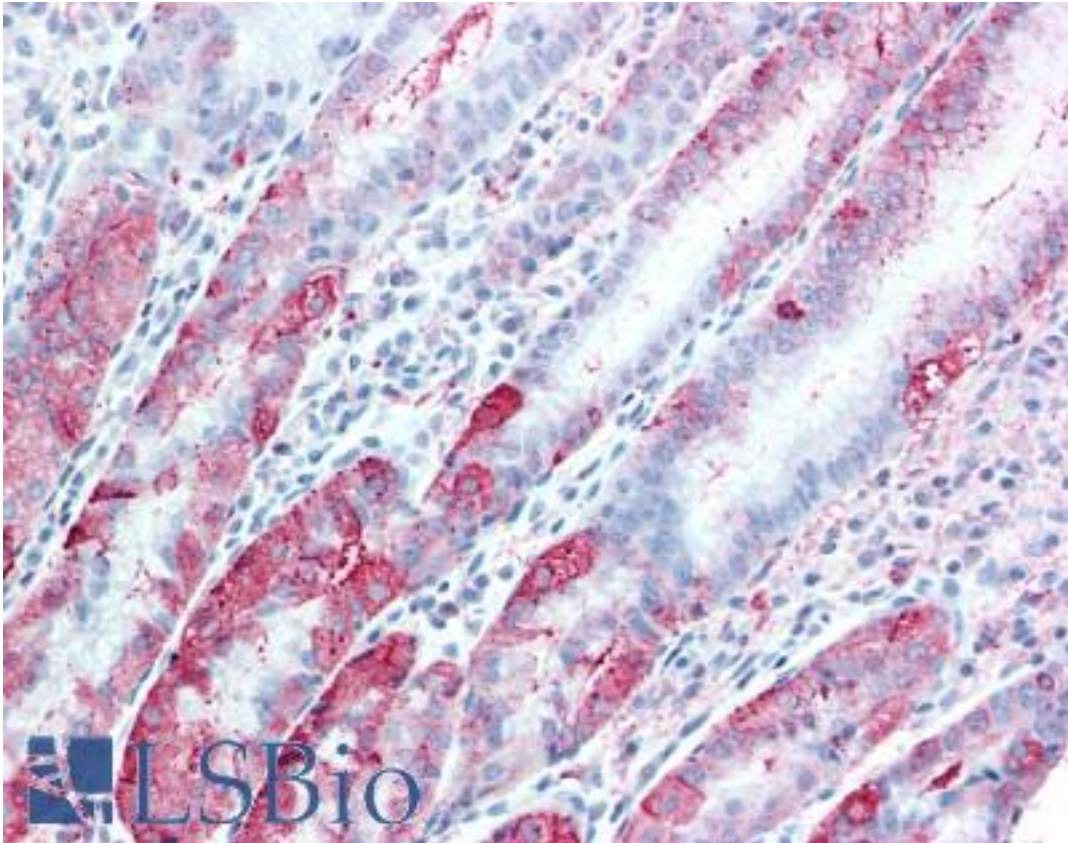


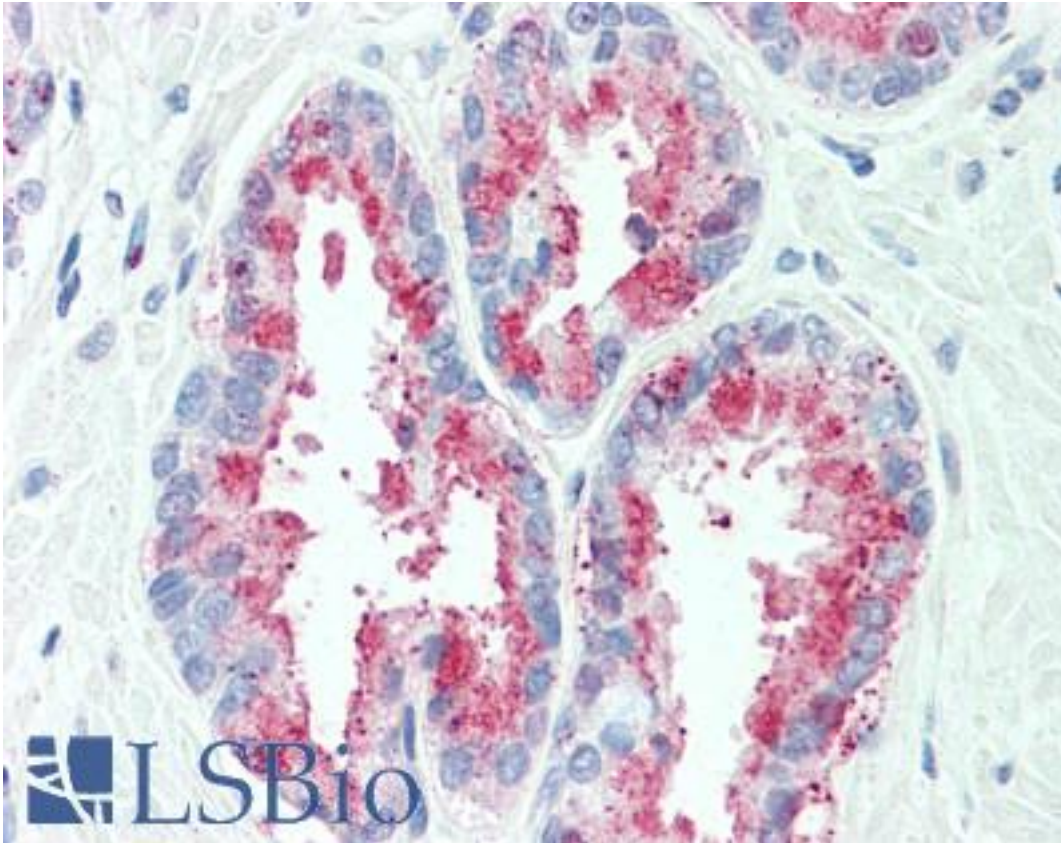
TSPAN13 / TM4SF13 Rabbit anti-Human Polyclonal (Internal) Antibody - LS-A8852 - LSBio	
CatalogID:	LS-A8852
Target:	Tetraspanin 13 (TSPAN13)
Synonyms:	TSPAN13 Antibody, NET6 Antibody, Tetraspanin 13 Antibody, Tetraspanin-13 Antibody, TM4SF13 Antibody, NET-6 Antibody, Tetraspan NET-6 Antibody, Tspan-13 Antibody
Family / Subfamily:	Tetraspan / not assigned-Tetraspan
Host	TSPAN13 antibody was produced in Rabbit
Clonality:	Polyclonal
Immunogen Species:	TSPAN13 / TM4SF13 antibody was raised against Human
Antigen Type:	Synthetic peptide
Immunogen:	TSPAN13 / TM4SF13 antibody was raised against synthetic 13 amino acid peptide from internal region of human TSPAN13. Percent identity with other species by BLAST analysis: Human, Chimpanzee, Gorilla, Gibbon, Monkey, Galago, Marmoset, Mouse, Rat, Horse (100%); Orangutan, Elephant, Panda, Dog, Rabbit, Opossum, Platypus (92%); Bat, Bovine, Pig, Guinea pig, Pufferfish, Zebrafish (85%).
Specificity:	Human TSPAN13. BLAST analysis of the peptide immunogen showed no homology with other human proteins.
Epitope:	Internal
Reactivity:	Human, Chimpanzee, Gorilla, Gibbon, Monkey, Mouse, Rat, Horse
Predicted Reactivity:	Orangutan, Dog, Rabbit
Purification:	Immunoaffinity purified
Presentation:	PBS, 0.1% sodium azide.
Recommended Storage:	Long term: -70°C; Short term: +4°C
Uses:	IHC - Paraffin (5 µg/ml) (Optimal dilution to be determined by the researcher)
Size:	50 µg
Concentration:	1 mg/ml

Immunohistochemistry Image:



Anti-TSPAN13 antibody LS-A8852 IHC of human, stomach. Immunohistochemistry of formalin-fixed, paraffin-embedded tissue after heat-induced antigen retrieval.

Immunohistochemistry Image:



Anti-TSPAN13 antibody LS-A8852 IHC of human, prostate. Immunohistochemistry of formalin-fixed, paraffin-embedded tissue after heat-induced antigen retrieval.

Requested From:

Japan

Laboratory Reagent For In Vitro Research Use Only

Not for resale without prior written consent from LifeSpan BioSciences, Inc.

Created on 9/23/2014

© 2014 LifeSpan BioSciences