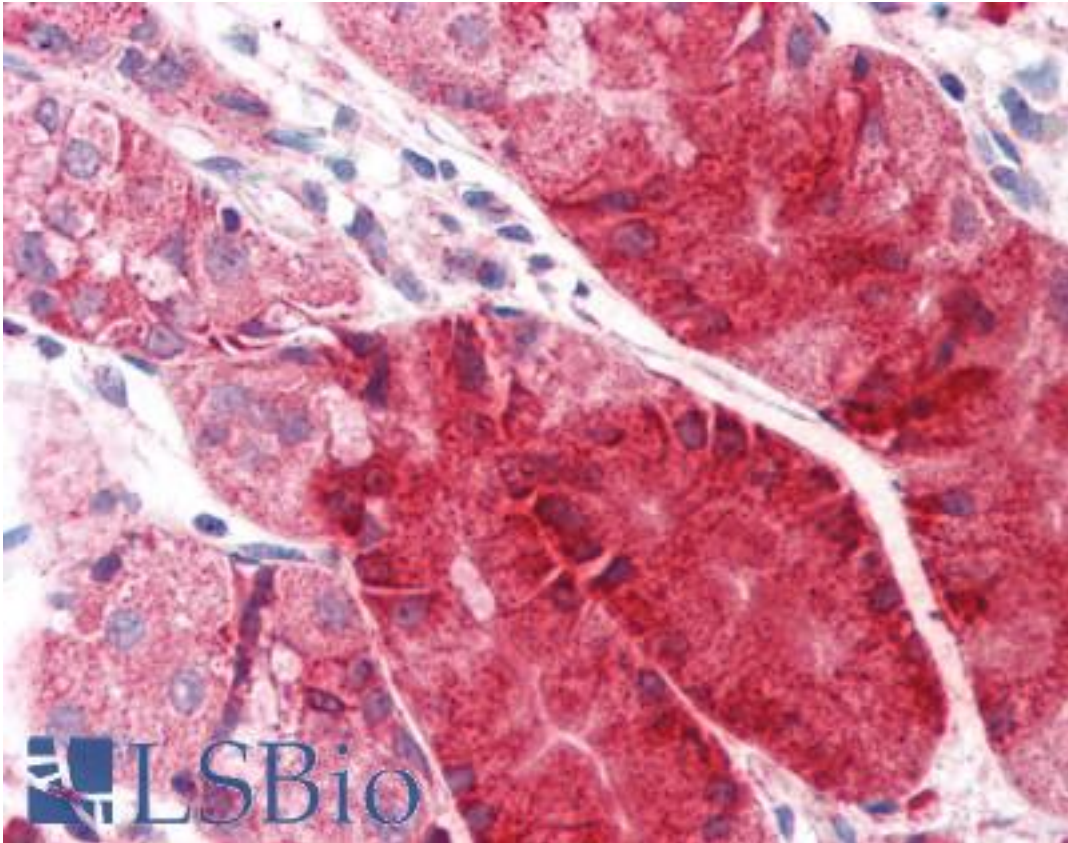


C14orf1 Rabbit anti-Human Polyclonal (C-Terminus) Antibody - LS-A8848 - LSBio

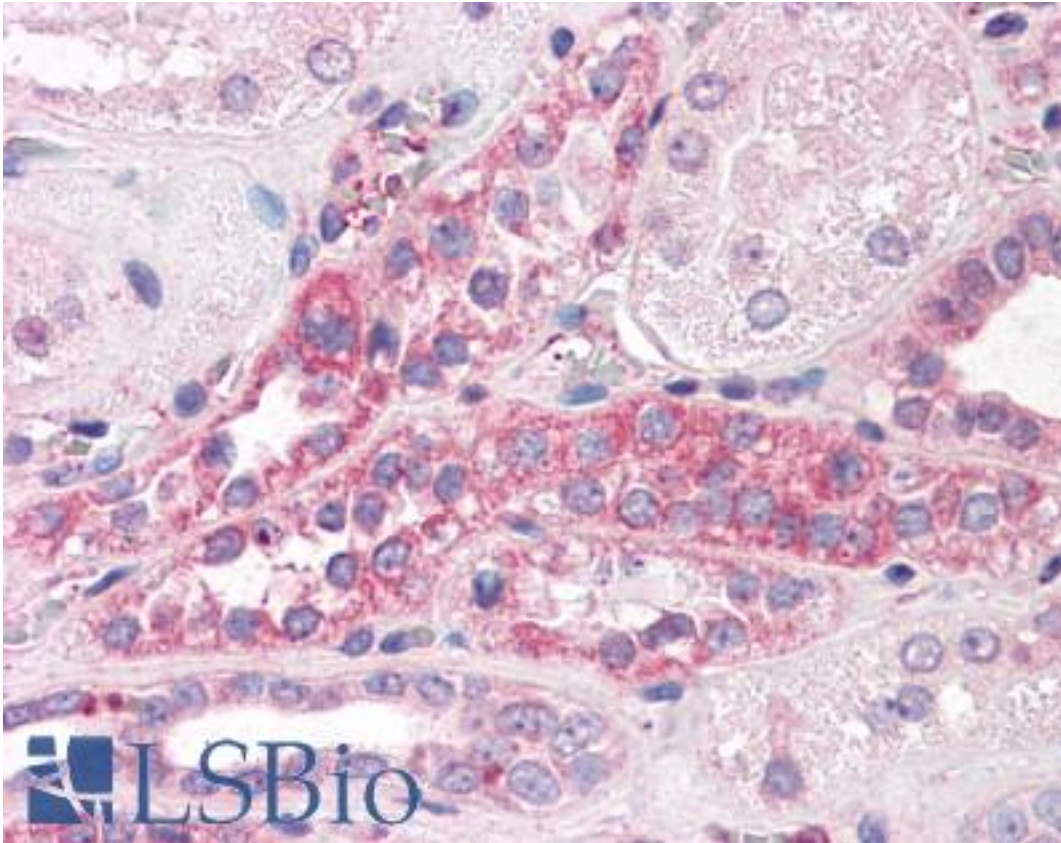
CatalogID:	LS-A8848
Target:	Chromosome 14 Open Reading Frame 1 (C14orf1)
Synonyms:	C14orf1 Antibody, ERG28 Antibody, NET51 Antibody
Host	C14orf1 antibody was produced in Rabbit
Clonality:	Polyclonal
Immunogen Species:	C14orf1 antibody was raised against Human
Antigen Type:	Synthetic peptide
Immunogen:	C14orf1 antibody was raised against synthetic 15 amino acid peptide from C-Terminus of human C14orf1. Percent identity with other species by BLAST analysis: Human, Chimpanzee, Gorilla, Gibbon, Monkey, Marmoset, Elephant, Panda, Bat, Rabbit, Guinea pig (100%); Galago, Mouse, Rat, Horse (93%); Platypus (87%); Dog, Bovine, Pig (80%).
Specificity:	Human C14orf1. BLAST analysis of the peptide immunogen showed no homology with other human proteins, except C14orf1 (100%), CCNB2 (53%).
Epitope:	C-Terminus
Reactivity:	Human, Chimpanzee, Gorilla, Gibbon, Monkey, Bat, Guinea pig, Rabbit
Predicted Reactivity:	Mouse, Rat, Horse
Purification:	Immunoaffinity purified
Presentation:	PBS, 0.1% sodium azide.
Recommended Storage:	Long term: -70°C; Short term: +4°C
Uses:	IHC - Paraffin (10 - 15 µg/ml) (Optimal dilution to be determined by the researcher)
Size:	50 µg
Concentration:	1 mg/ml

Immunohistochemistry Image:



Anti-C14orf1 antibody LS-A8848 IHC of human stomach. Immunohistochemistry of formalin-fixed, paraffin-embedded tissue after heat-induced antigen retrieval.

Immunohistochemistry Image:



Anti-C14orf1 antibody LS-A8848 IHC of human kidney. Immunohistochemistry of formalin-fixed, paraffin-embedded tissue after heat-induced antigen retrieval.

Requested From:

Japan

Laboratory Reagent For In Vitro Research Use Only

Not for resale without prior written consent from LifeSpan BioSciences, Inc.

Created on 9/23/2014

© 2014 LifeSpan BioSciences