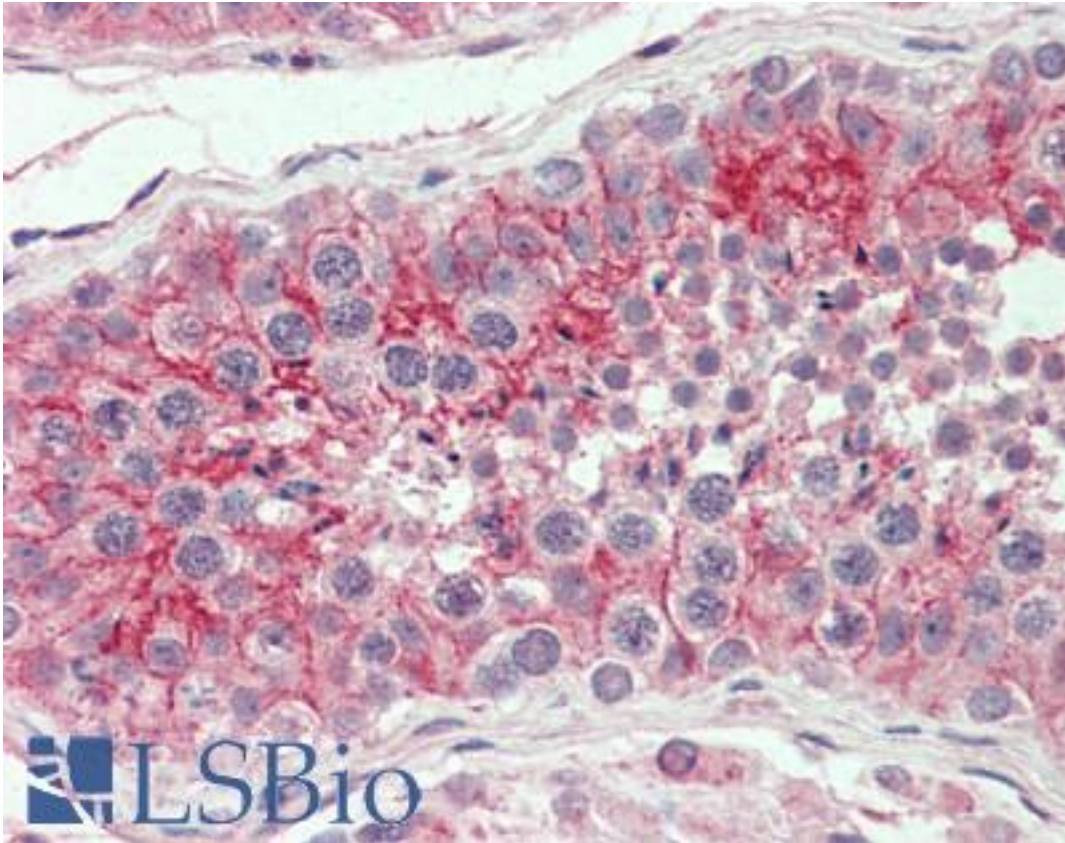


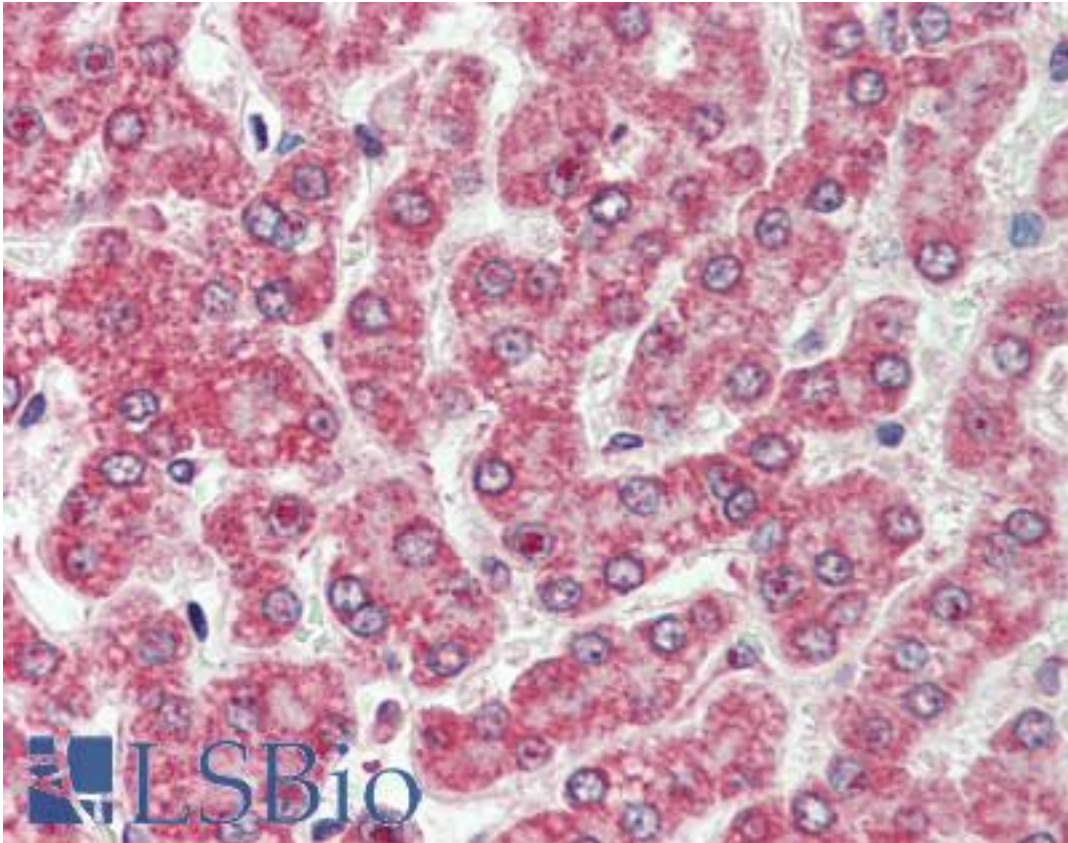
CXADR Rabbit anti-Human Polyclonal (Internal) Antibody - LS-A8845 - LSBio	
<b>CatalogID:</b>	LS-A8845
<b>Target:</b>	coxsackie virus and adenovirus receptor (CXADR)
<b>Synonyms:</b>	CXADR Antibody, CAR4/6 Antibody, Coxsackie-adenovirus receptor Antibody, CVB3-binding protein Antibody, CAR Antibody, HCAR Antibody, HCVADR Antibody
<b>Host</b>	CXADR antibody was produced in Rabbit
<b>Clonality:</b>	Polyclonal
<b>Immunogen Species:</b>	CXADR antibody was raised against Human
<b>Antigen Type:</b>	Synthetic peptide
<b>Immunogen:</b>	CXADR antibody was raised against synthetic 15 amino acid peptide from internal region of human CXADR. Percent identity with other species by BLAST analysis: Human, Chimpanzee, Gorilla, Orangutan, Gibbon, Monkey, Galago, Marmoset, Mouse, Rat, Hamster, Elephant, Panda, Bat, Bovine, Rabbit, Horse, Pig, Opossum, Guinea pig (100%); Zebra finch, Platypus, Lizard (93%); Xenopus, Stickleback, Pufferfish, Zebrafish (80%).
<b>Specificity:</b>	Human CXADR. BLAST analysis of the peptide immunogen showed no homology with other human proteins. Immunogenic peptide is present in isoforms 1 and 2 per Swiss-Prot P78310.
<b>Epitope:</b>	Internal
<b>Reactivity:</b>	Human, Chimpanzee, Gorilla, Orangutan, Gibbon, Monkey, Mouse, Rat, Bat, Bovine, Guinea pig, Hamster, Horse, Pig, Rabbit
<b>Purification:</b>	Immunoaffinity purified
<b>Presentation:</b>	PBS, 0.1% sodium azide.
<b>Recommended Storage:</b>	Long term: -70°C; Short term: +4°C
<b>Usage Summary:</b>	Immunohistochemistry: LS-A8845 was validated for use in immunohistochemistry on a panel of 21 formalin-fixed, paraffin-embedded (FFPE) human tissues after heat induced antigen retrieval in pH 6.0 citrate buffer. After incubation with the primary antibody, slides were incubated with biotinylated secondary antibody, followed by alkaline phosphatase-streptavidin and chromogen. The stained slides were evaluated by a pathologist to confirm staining specificity. The optimal working concentration for LS-A8845 was determined to be 10 ug/ml.
<b>Uses:</b>	IHC - Paraffin (10 µg/ml) (Optimal dilution to be determined by the researcher)
<b>Size:</b>	50 µg
<b>Concentration:</b>	1 mg/ml

**Immunohistochemistry Image:**



Anti-CXADR antibody LS-A8845 IHC of human testis. Immunohistochemistry of formalin-fixed, paraffin-embedded tissue after heat-induced antigen retrieval.

**Immunohistochemistry Image:**



Anti-CXADR antibody LS-A8845 IHC of human liver. Immunohistochemistry of formalin-fixed, paraffin-embedded tissue after heat-induced antigen retrieval.

**Requested From:**

Japan

Laboratory Reagent For In Vitro Research Use Only

Not for resale without prior written consent from LifeSpan BioSciences, Inc.

Created on 9/23/2014

© 2014 LifeSpan BioSciences