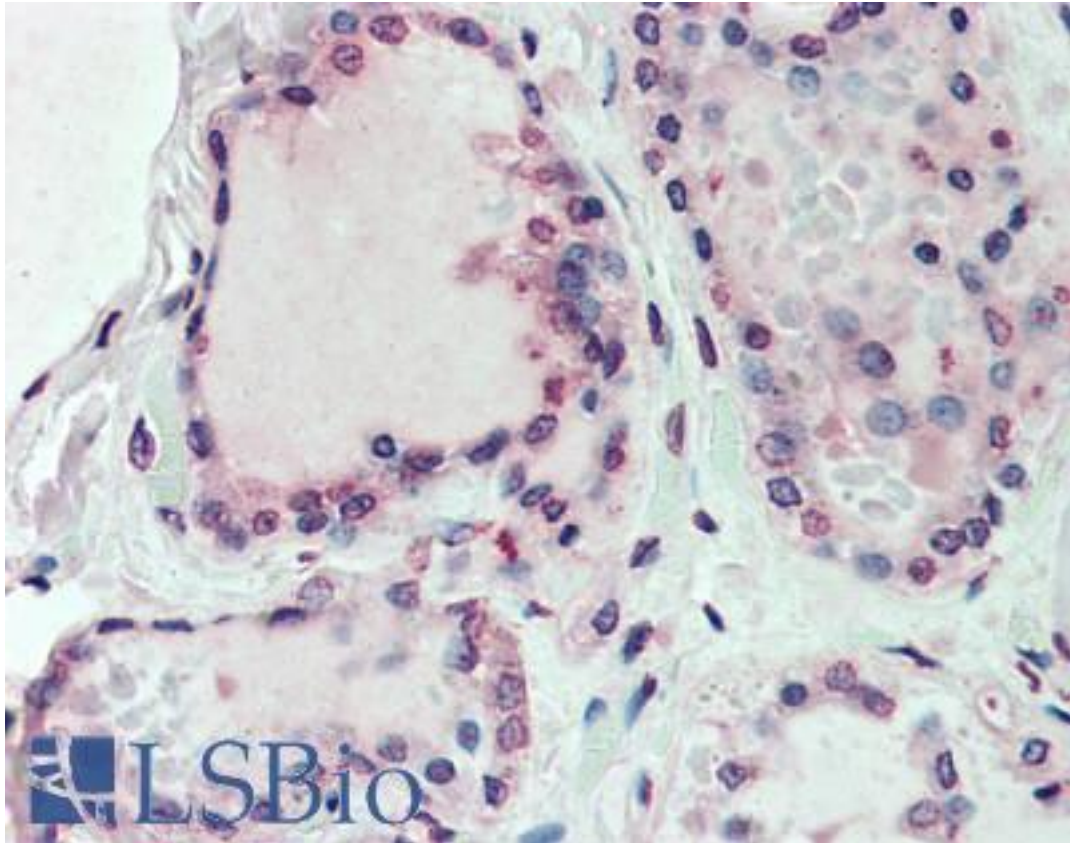


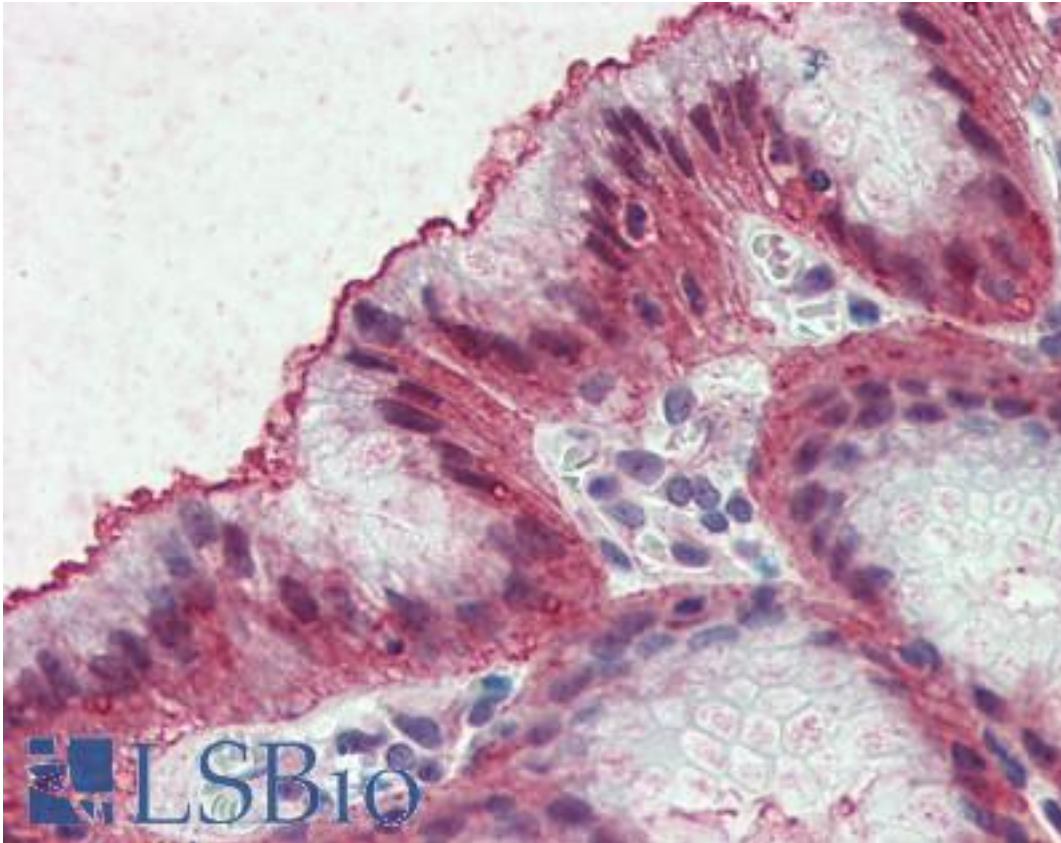
EMB/ Embigin Rabbit anti-Human Polyclonal (Internal) Antibody - LS-A8839 - LSBio	
<b>CatalogID:</b>	LS-A8839
<b>Target:</b>	embigin
<b>Synonyms:</b>	EMB Antibody, Embigin homolog (mouse) Antibody, Embigin Antibody, Embigin homolog Antibody
<b>Host</b>	EMB antibody was produced in Rabbit
<b>Clonality:</b>	Polyclonal
<b>Immunogen Species:</b>	EMB/ Embigin antibody was raised against Human
<b>Antigen Type:</b>	Synthetic peptide
<b>Immunogen:</b>	EMB/ Embigin antibody was raised against synthetic 14 amino acid peptide from internal region of human EMB. Percent identity with other species by BLAST analysis: Human, Chimpanzee, Gibbon, Monkey, Galago, Marmoset (100%); Orangutan, Horse (93%); Gorilla, Bat, Platypus (86%).
<b>Specificity:</b>	Human EMB. BLAST analysis of the peptide immunogen showed no homology with other human proteins.
<b>Epitope:</b>	Internal
<b>Reactivity:</b>	Human, Chimpanzee, Gibbon, Monkey
<b>Predicted Reactivity:</b>	Orangutan, Horse
<b>Purification:</b>	Immunoaffinity purified
<b>Presentation:</b>	PBS, 0.1% sodium azide.
<b>Recommended Storage:</b>	Long term: -70°C; Short term: +4°C
<b>Usage Summary:</b>	Immunohistochemistry: LS-A8839 was validated for use in immunohistochemistry on a panel of 21 formalin-fixed, paraffin-embedded (FFPE) human tissues after heat induced antigen retrieval in pH 6.0 citrate buffer. After incubation with the primary antibody, slides were incubated with biotinylated secondary antibody, followed by alkaline phosphatase-streptavidin and chromogen. The stained slides were evaluated by a pathologist to confirm staining specificity. The optimal working concentration for LS-A8839 was determined to be 10 ug/ml.
<b>Uses:</b>	IHC - Paraffin (10 µg/ml) (Optimal dilution to be determined by the researcher)
<b>Size:</b>	50 µg
<b>Concentration:</b>	1 mg/ml

**Immunohistochemistry Image:**



Anti-EMB antibody LS-A8839 IHC of human thyroid. Immunohistochemistry of formalin-fixed, paraffin-embedded tissue after heat-induced antigen retrieval.

**Immunohistochemistry Image:**



Anti-EMB antibody LS-A8839 IHC of human stomach. Immunohistochemistry of formalin-fixed, paraffin-embedded tissue after heat-induced antigen retrieval.

**Requested From:**

Japan

Laboratory Reagent For In Vitro Research Use Only

Not for resale without prior written consent from LifeSpan BioSciences, Inc.

Created on 9/23/2014

© 2014 LifeSpan BioSciences