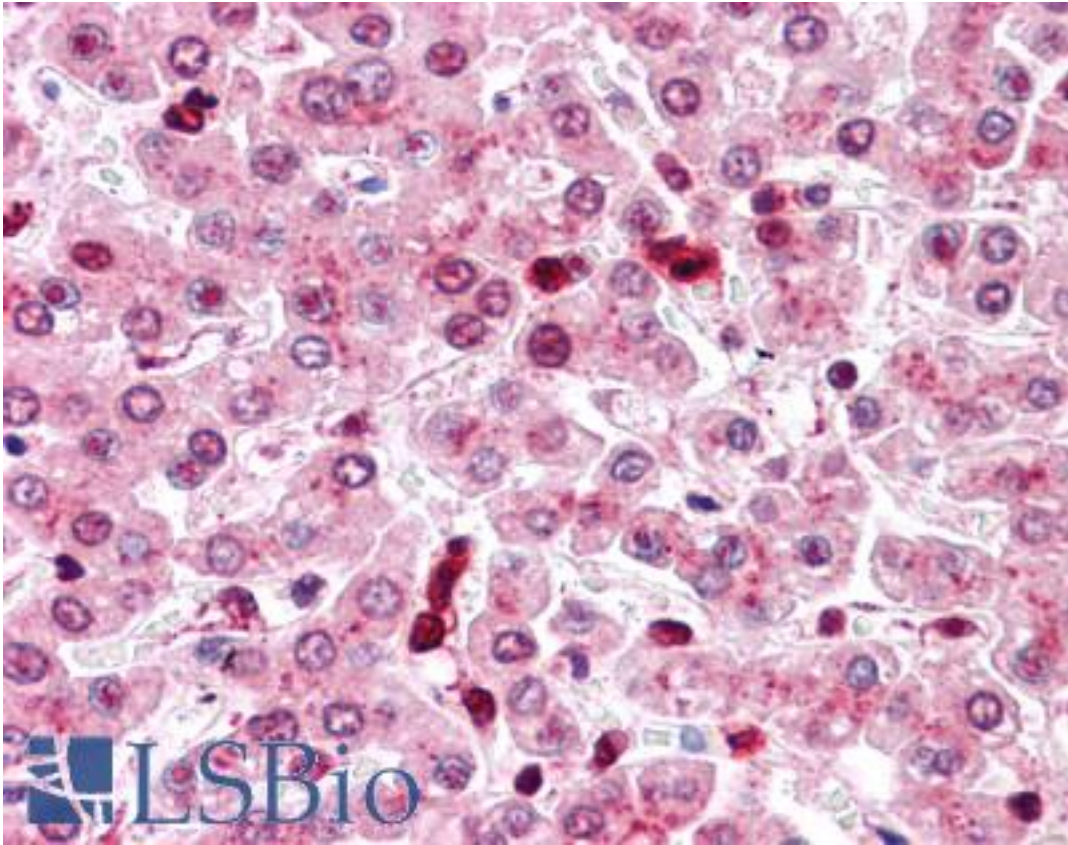


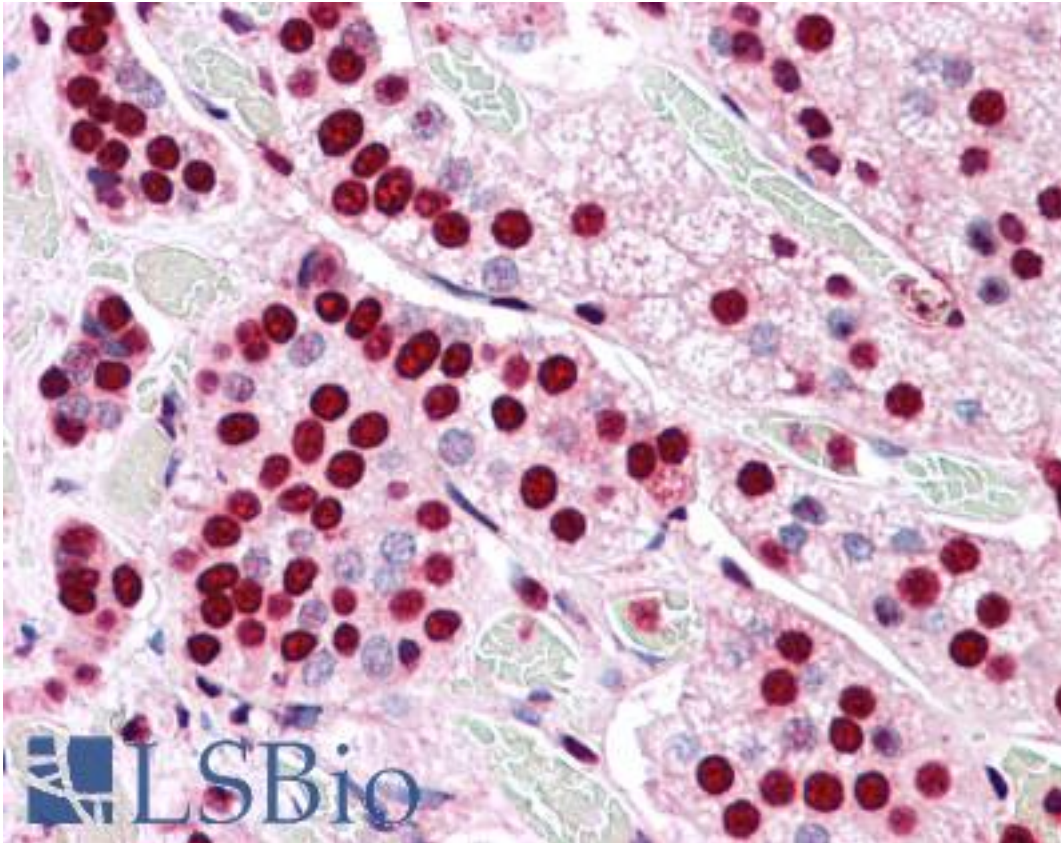
COMT Rabbit anti-Human Polyclonal (Internal) Antibody - LS-A8833 - LSBio	
<b>CatalogID:</b>	LS-A8833
<b>Target:</b>	catechol-O-methyltransferase (COMT)
<b>Synonyms:</b>	COMT Antibody, Catechol O-methyltransferase Antibody, Catechol-O-methyltransferase Antibody
<b>Host</b>	COMT antibody was produced in Rabbit
<b>Clonality:</b>	Polyclonal
<b>Immunogen Species:</b>	COMT antibody was raised against Human
<b>Antigen Type:</b>	Synthetic peptide
<b>Immunogen:</b>	COMT antibody was raised against synthetic 15 amino acid peptide from internal region of human COMT. Percent identity with other species by BLAST analysis: Human, Gorilla, Gibbon, Monkey, Marmoset, Mouse, Rat, Bat, Bovine, Pig (100%); Hamster, Elephant, Panda, Rabbit, Horse (93%); Dog, Turkey, Chicken, Xenopus (87%).
<b>Specificity:</b>	Human COMT. BLAST analysis of the peptide immunogen showed no homology with other human proteins.
<b>Epitope:</b>	Internal
<b>Reactivity:</b>	Human, Gorilla, Gibbon, Monkey, Mouse, Rat, Bat, Bovine, Pig
<b>Predicted Reactivity:</b>	Hamster, Horse, Rabbit
<b>Purification:</b>	Immunoaffinity purified
<b>Presentation:</b>	PBS, 0.1% sodium azide.
<b>Recommended Storage:</b>	Short term 4°C, long term aliquot and store at -20°C, avoid freeze thaw cycles.
<b>Uses:</b>	IHC - Paraffin (2.5 - 5 µg/ml) (Optimal dilution to be determined by the researcher)
<b>Size:</b>	50 µg
<b>Concentration:</b>	0.5 mg/ml

**Immunohistochemistry Image:**



Anti-COMT antibody LS-A8833 IHC of human liver. Immunohistochemistry of formalin-fixed, paraffin-embedded tissue after heat-induced antigen retrieval.

**Immunohistochemistry Image:**



Anti-COMT antibody LS-A8833 IHC of human adrenal. Immunohistochemistry of formalin-fixed, paraffin-embedded tissue after heat-induced antigen retrieval.

**Requested From:**

Japan

Laboratory Reagent For In Vitro Research Use Only

Not for resale without prior written consent from LifeSpan BioSciences, Inc.

Created on 9/23/2014

© 2014 LifeSpan BioSciences