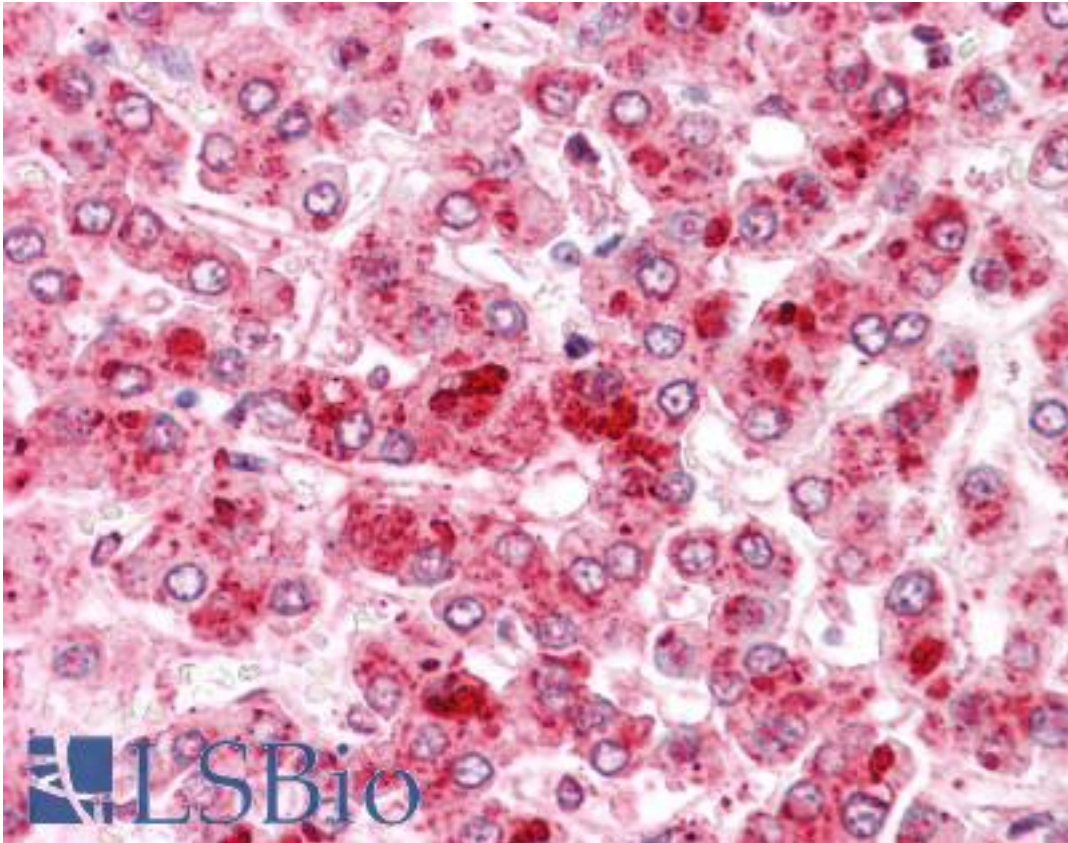


COMT Rabbit anti-Human Polyclonal (N-Terminus) Antibody - LS-A8831 - LSBio

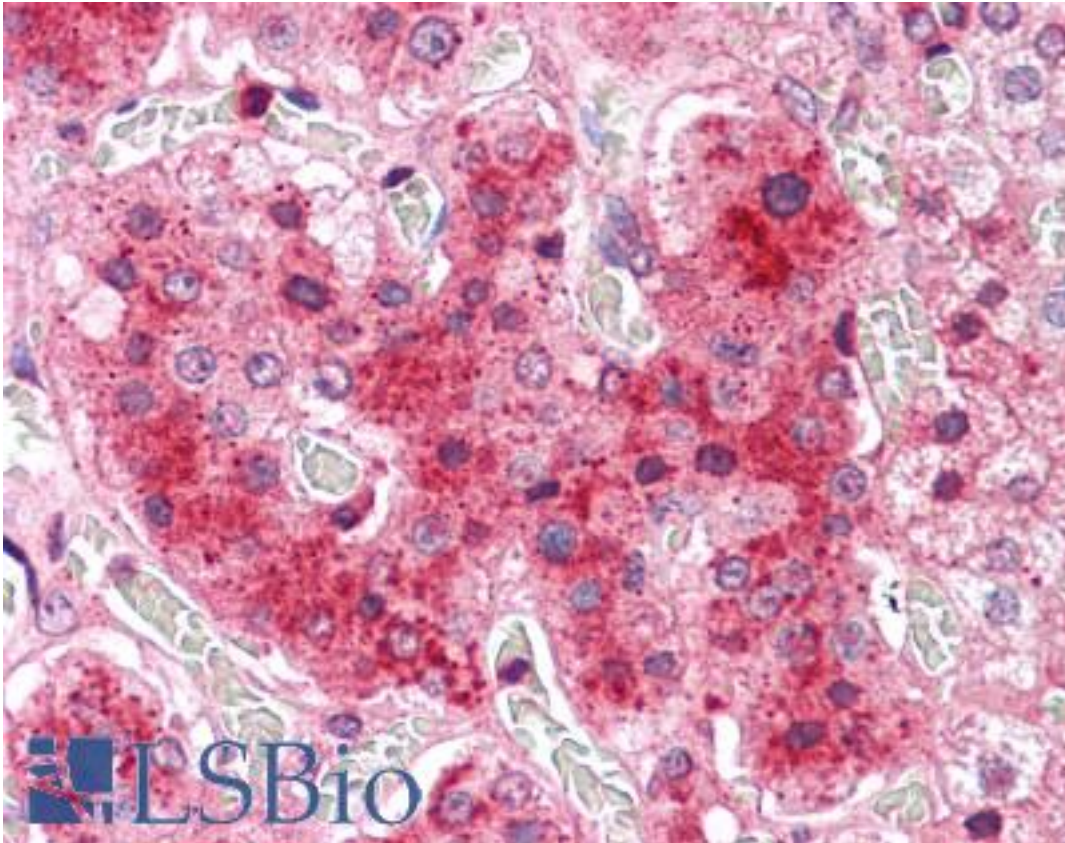
CatalogID:	LS-A8831
Target:	catechol-O-methyltransferase (COMT)
Synonyms:	COMT Antibody, Catechol O-methyltransferase Antibody, Catechol-O-methyltransferase Antibody
Host	COMT antibody was produced in Rabbit
Clonality:	Polyclonal
Immunogen Species:	COMT antibody was raised against Human
Antigen Type:	Synthetic peptide
Immunogen:	COMT antibody was raised against synthetic 19 amino acid peptide from N-terminus of human COMT. Percent identity with other species by BLAST analysis: Human, Gorilla (100%); Gibbon, Monkey (95%); Marmoset (89%); Hamster (84%).
Specificity:	Human COMT. BLAST analysis of the peptide immunogen showed no homology with other human proteins.
Epitope:	N-Terminus
Reactivity:	Human, Gorilla
Predicted Reactivity:	Gibbon, Monkey
Purification:	Immunoaffinity purified
Presentation:	PBS, 0.1% sodium azide.
Recommended Storage:	Short term 4°C, long term aliquot and store at -20°C, avoid freeze thaw cycles.
Uses:	IHC - Paraffin (5 µg/ml) (Optimal dilution to be determined by the researcher)
Size:	50 µg
Concentration:	1 mg/ml

Immunohistochemistry Image:



Anti-COMT antibody LS-A8831 IHC of human liver. Immunohistochemistry of formalin-fixed, paraffin-embedded tissue after heat-induced antigen retrieval.

Immunohistochemistry Image:



Anti-COMT antibody LS-A8831 IHC of human adrenal. Immunohistochemistry of formalin-fixed, paraffin-embedded tissue after heat-induced antigen retrieval.

Requested From:

Japan

Laboratory Reagent For In Vitro Research Use Only

Not for resale without prior written consent from LifeSpan BioSciences, Inc.

Created on 9/23/2014

© 2014 LifeSpan BioSciences