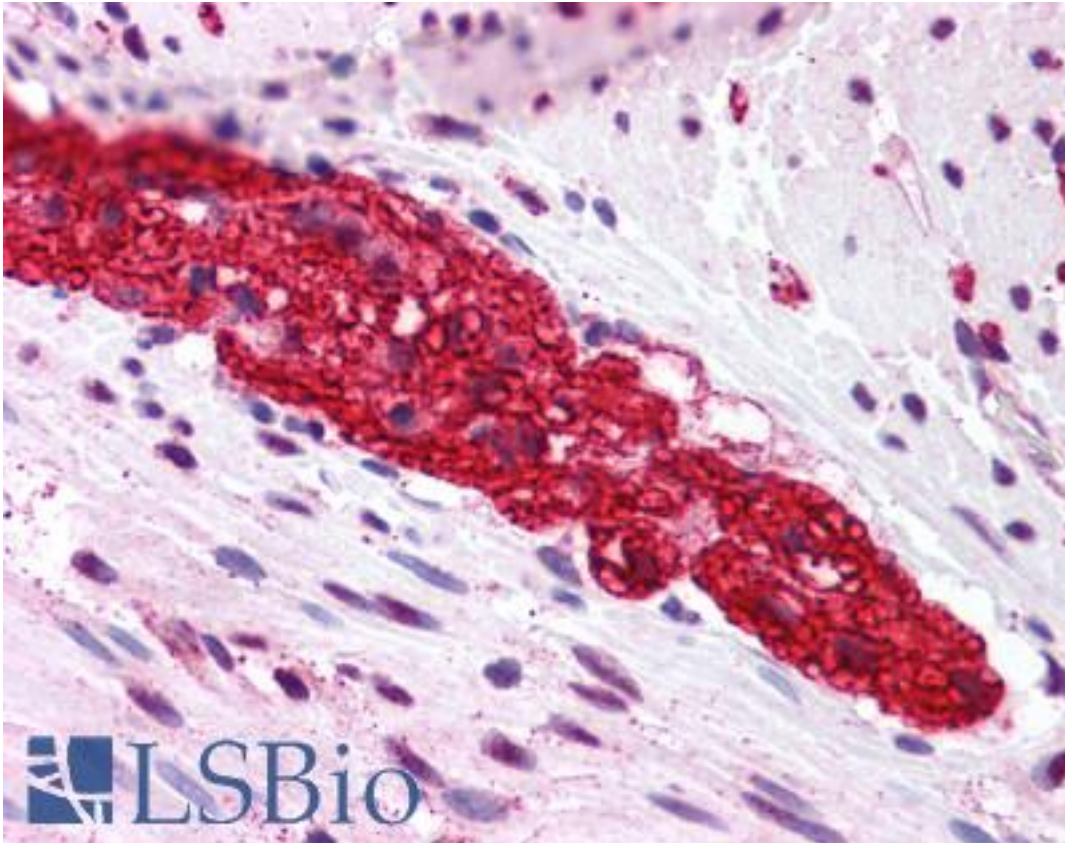


GRM5 / MGLUR5 Rabbit anti-Human Polyclonal (N-Terminus) Antibody - LS-A883 - LSBio	
CatalogID:	LS-A883
Target:	glutamate receptor, metabotropic 5 (GRM5)
Synonyms:	GRM5 Antibody, GPRC1E Antibody, MGLUR5 Antibody, Mglur5b Antibody, MGLu5 Antibody
Family / Subfamily:	GPCR / Metabotropic glutamate
Host	GRM5 antibody was produced in Rabbit
Clonality:	Polyclonal
Immunogen Species:	GRM5 / MGLUR5 antibody was raised against Human
Antigen Type:	Synthetic peptide
Immunogen:	GRM5 / MGLUR5 antibody was raised against synthetic 17 amino acid peptide from N-terminal extracellular domain of human GRM5 / MGLUR5. Percent identity with other species by BLAST analysis: Human, Gibbon, Monkey, Marmoset, Mouse, Rat, Dog, Bat, Bovine, Hamster, Horse, Rabbit, Pig, Turkey, Zebra finch, Chicken, Platypus, Lizard (100%); Xenopus (94%); Opossum, Pufferfish (88%); Zebrafish (82%).
Specificity:	Human GRM5 / MGLUR5. BLAST analysis of the peptide immunogen showed no homology with other human proteins.
Epitope:	N-Terminus
Reactivity:	Human, Gibbon, Monkey, Mouse, Rat, Bat, Bovine, Dog, Hamster, Horse, Pig, Rabbit, Chicken
Predicted Reactivity:	Xenopus
Purification:	Immunoaffinity purified
Presentation:	PBS, 0.1% sodium azide.
Recommended Storage:	Long term: -70°C; Short term: +4°C
Usage Summary:	Immunohistochemistry: LS-A883 was validated for use in immunohistochemistry on a panel of 21 formalin-fixed, paraffin-embedded (FFPE) human tissues after heat induced antigen retrieval in pH 6.0 citrate buffer. After incubation with the primary antibody, slides were incubated with biotinylated secondary antibody, followed by alkaline phosphatase-streptavidin and chromogen. The stained slides were evaluated by a pathologist to confirm staining specificity. The optimal working concentration for LS-A883 was determined to be 5.6 ug/ml.
Uses:	IHC - Paraffin (5.6 µg/ml) (Optimal dilution to be determined by the researcher)
Size:	50 µg
Concentration:	1 mg/ml

Immunohistochemistry Image:



Anti-GRM5 / MGLUR5 antibody LS-A883 IHC of human colon, myenteric plexus.
Immunohistochemistry of formalin-fixed, paraffin-embedded tissue after heat-induced antigen retrieval.

Requested From:

Japan

Laboratory Reagent For In Vitro Research Use Only

Not for resale without prior written consent from LifeSpan BioSciences, Inc.

Created on 9/23/2014

© 2014 LifeSpan BioSciences