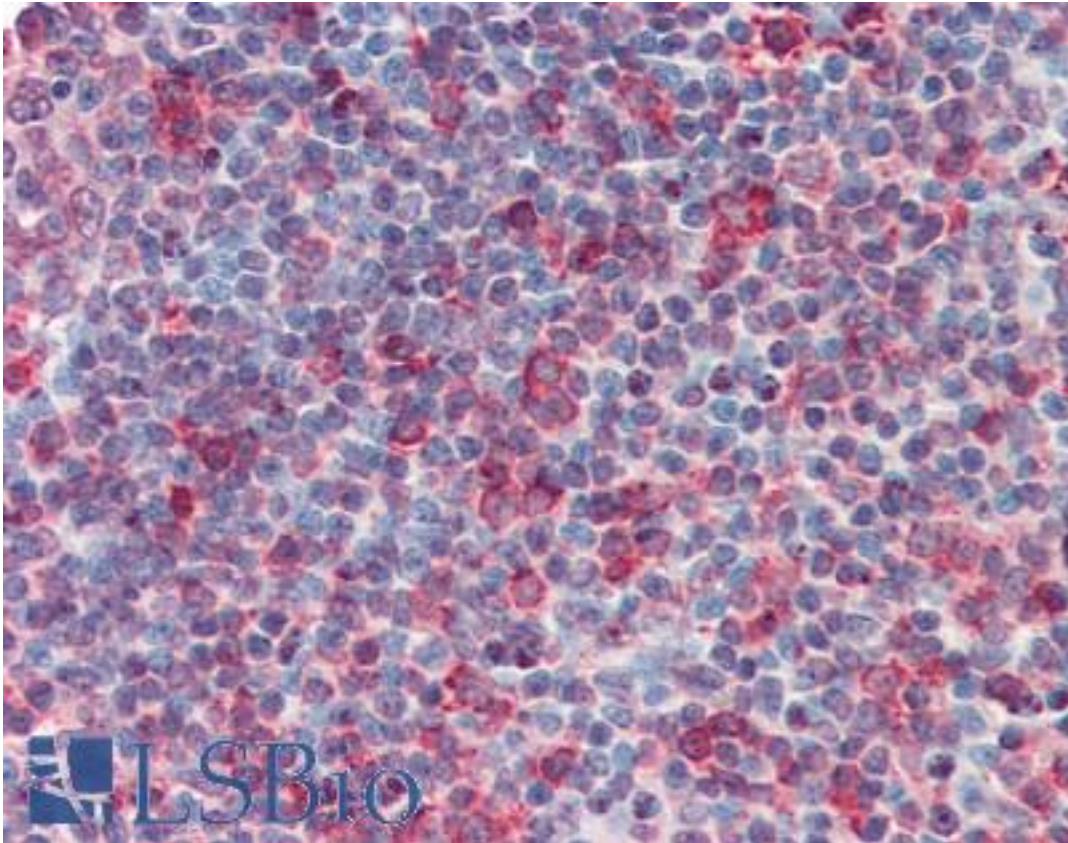


CD70 Rabbit anti-Human Polyclonal (Internal) Antibody - LS-A8809 - LSBio

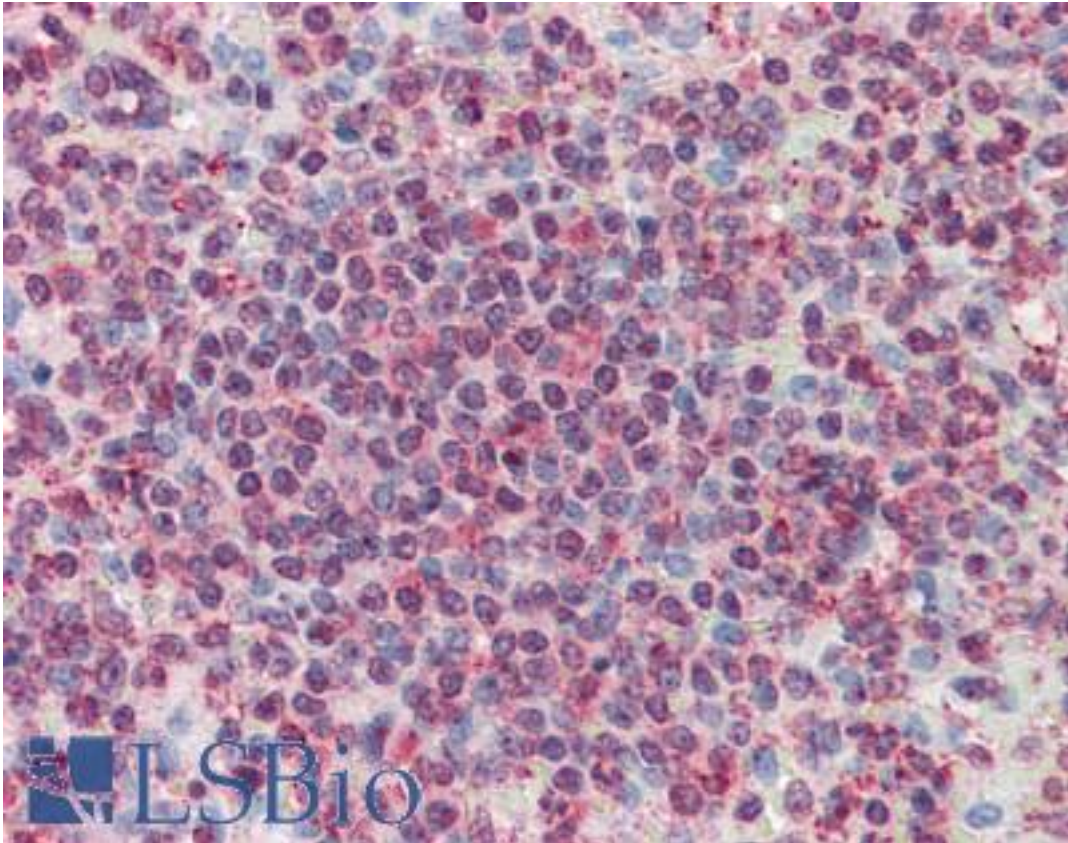
CatalogID:	LS-A8809
Target:	CD70 molecule
Synonyms:	CD70 Antibody, CD27LG Antibody, Ki-24 antigen Antibody, Surface antigen CD70 Antibody, CD27 ligand Antibody, CD27-L Antibody, CD70 antigen Antibody, CD70 molecule Antibody, TNFSF7 Antibody
Family / Subfamily:	TNF / not assigned-TNF
Host	CD70 antibody was produced in Rabbit
Clonality:	Polyclonal
Immunogen Species:	CD70 antibody was raised against Human
Antigen Type:	Synthetic peptide
Immunogen:	CD70 antibody was raised against synthetic 17 amino acid peptide from internal region of human CD70. Percent identity with other species by BLAST analysis: Human, Gorilla (100%); Gibbon, Monkey, Marmoset (94%); Bovine, Rabbit (82%).
Specificity:	Human CD70. BLAST analysis of the peptide immunogen showed no homology with other human proteins.
Epitope:	Internal
Reactivity:	Human, Gorilla
Predicted Reactivity:	Gibbon, Monkey
Purification:	Immunoaffinity purified
Presentation:	PBS, 0.1% sodium azide.
Recommended Storage:	Long term: -70°C; Short term: +4°C
Uses:	IHC - Paraffin (5 - 10 µg/ml) (Optimal dilution to be determined by the researcher)
Size:	50 µg
Concentration:	1 mg/ml

Immunohistochemistry Image:



Anti-CD70 antibody LS-A8809 IHC of human tonsil.. Immunohistochemistry of formalin-fixed, paraffin-embedded tissue after heat-induced antigen retrieval.

Immunohistochemistry Image:



Anti-CD70 antibody LS-A8809 IHC of human spleen. Immunohistochemistry of formalin-fixed, paraffin-embedded tissue after heat-induced antigen retrieval.

Requested From:

Japan

Laboratory Reagent For In Vitro Research Use Only

Not for resale without prior written consent from LifeSpan BioSciences, Inc.

Created on 9/23/2014

© 2014 LifeSpan BioSciences