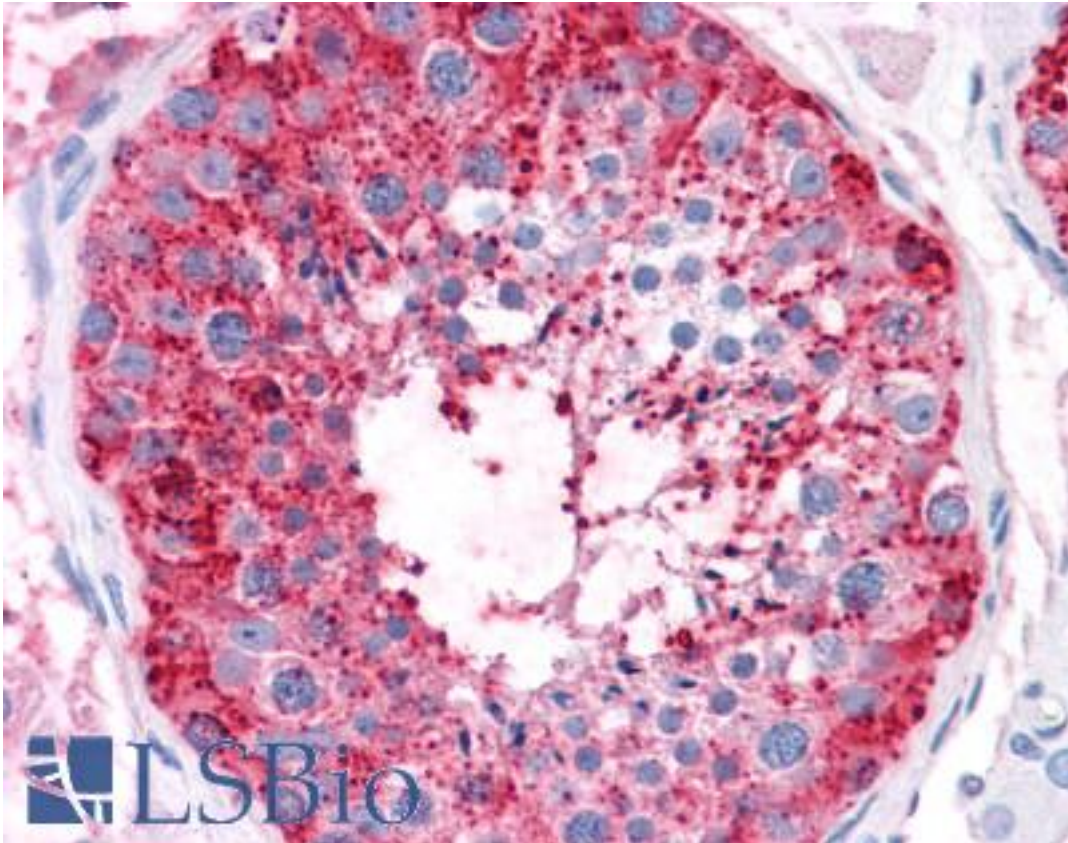


ADAM20 Rabbit anti-Human Polyclonal (Internal) Antibody - LS-A8800 - LSBio

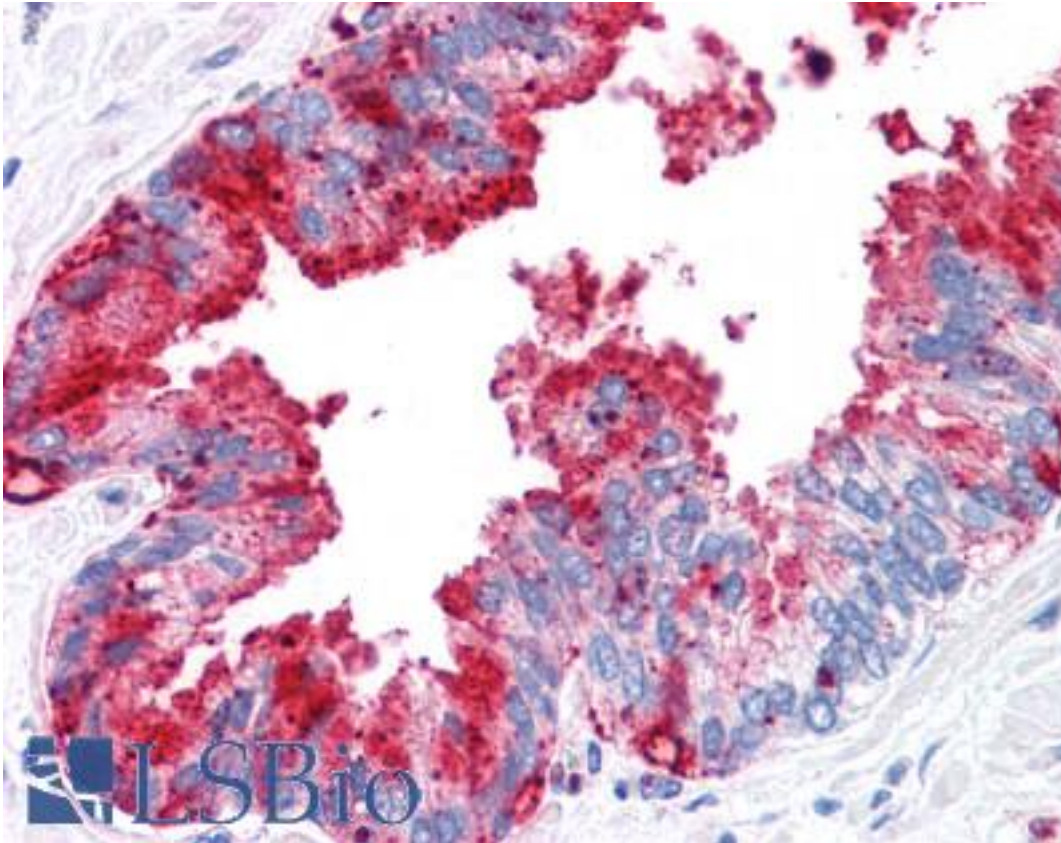
CatalogID:	LS-A8800
Target:	ADAM metallopeptidase domain 20 (ADAM20)
Synonyms:	ADAM20 Antibody, ADAM 20 Antibody
Family / Subfamily:	Protease / Metallopeptidase M12B
Host	ADAM20 antibody was produced in Rabbit
Clonality:	Polyclonal
Immunogen Species:	ADAM20 antibody was raised against Human
Antigen Type:	Synthetic peptide
Immunogen:	ADAM20 antibody was raised against synthetic 15 amino acid peptide from internal region of human ADAM20. Percent identity with other species by BLAST analysis: Human, Gorilla, Gibbon (100%).
Specificity:	Human ADAM20. BLAST analysis of the peptide immunogen showed no homology with other human proteins.
Epitope:	Internal
Reactivity:	Human, Gorilla, Gibbon
Purification:	Immunoaffinity purified
Presentation:	PBS, 0.1% sodium azide.
Recommended Storage:	Short term 4°C, long term aliquot and store at -20°C, avoid freeze thaw cycles.
Uses:	IHC - Paraffin (10 µg/ml) (Optimal dilution to be determined by the researcher)
Size:	50 µg
Concentration:	0.3 mg/ml

Immunohistochemistry Image:



Anti-ADAM20 antibody LS-A8800 IHC of human testis. Immunohistochemistry of formalin-fixed, paraffin-embedded tissue after heat-induced antigen retrieval.

Immunohistochemistry Image:



Anti-ADAM20 antibody LS-A8800 IHC of human prostate. Immunohistochemistry of formalin-fixed, paraffin-embedded tissue after heat-induced antigen retrieval.

Requested From:

Japan

Laboratory Reagent For In Vitro Research Use Only

Not for resale without prior written consent from LifeSpan BioSciences, Inc.

Created on 9/23/2014

© 2014 LifeSpan BioSciences