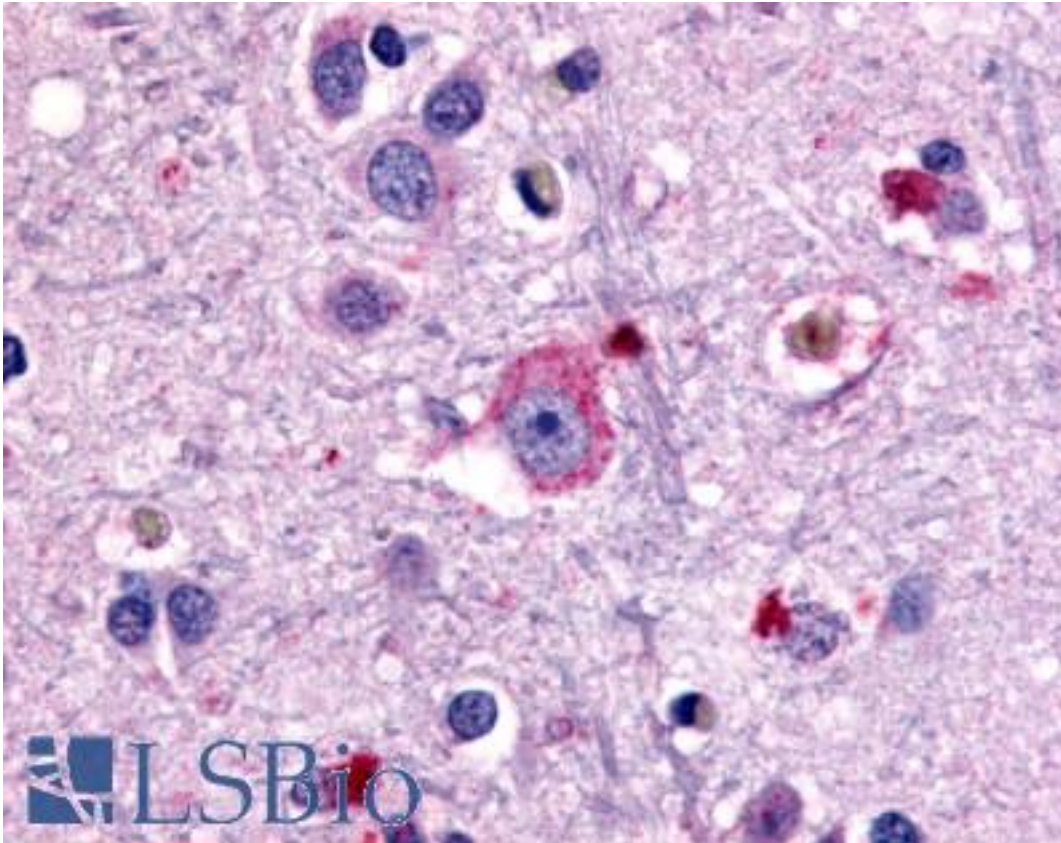


GRM1 / MGLUR1 Rabbit anti-Human Polyclonal (N-Terminus) Antibody - LS-A879 - LSBio	
CatalogID:	LS-A879
Target:	glutamate receptor, metabotropic 1 (GRM1)
Synonyms:	GRM1 Antibody, GRM1A Antibody, GPRC1A Antibody, MGLu1 Antibody, MGLUR1 Antibody, SCAR13 Antibody, MGLUR1A Antibody
Family / Subfamily:	GPCR / Metabotropic glutamate
Host	GRM1 antibody was produced in Rabbit
Clonality:	Polyclonal
Immunogen Species:	GRM1 / MGLUR1 antibody was raised against Human
Antigen Type:	Synthetic peptide
Immunogen:	GRM1 / MGLUR1 antibody was raised against synthetic 17 amino acid peptide from N-terminal extracellular domain of human GRM1 / MGLUR1. Percent identity with other species by BLAST analysis: Human, Chimpanzee, Gorilla, Gibbon, Elephant, Panda, Bovine, Rabbit (100%); Monkey, Marmoset, Mouse, Rat, Hamster, Dog, Bat, Horse, Opossum (94%); Chicken, Platypus (88%); Xenopus (82%).
Specificity:	Human GRM1 / MGLUR1. BLAST analysis of the peptide immunogen showed no homology with other human proteins.
Epitope:	N-Terminus
Reactivity:	Human, Chimpanzee, Gorilla, Gibbon, Bovine, Rabbit
Predicted Reactivity:	Monkey, Mouse, Rat, Bat, Dog, Hamster, Horse
Purification:	Immunoaffinity purified
Presentation:	PBS, 0.1% sodium azide.
Recommended Storage:	Long term: -70°C; Short term: +4°C
Uses:	IHC - Paraffin (17 µg/ml) (Optimal dilution to be determined by the researcher)
Size:	50 µg
Concentration:	1 mg/ml

Immunohistochemistry Image:



Anti-GRM1 / MGLUR1 antibody LS-A879 IHC of human brain, neurons and glia.
Immunohistochemistry of formalin-fixed, paraffin-embedded tissue after heat-induced antigen retrieval.

Requested From:

Japan

Laboratory Reagent For In Vitro Research Use Only

Not for resale without prior written consent from LifeSpan BioSciences, Inc.

Created on 9/23/2014

© 2014 LifeSpan BioSciences