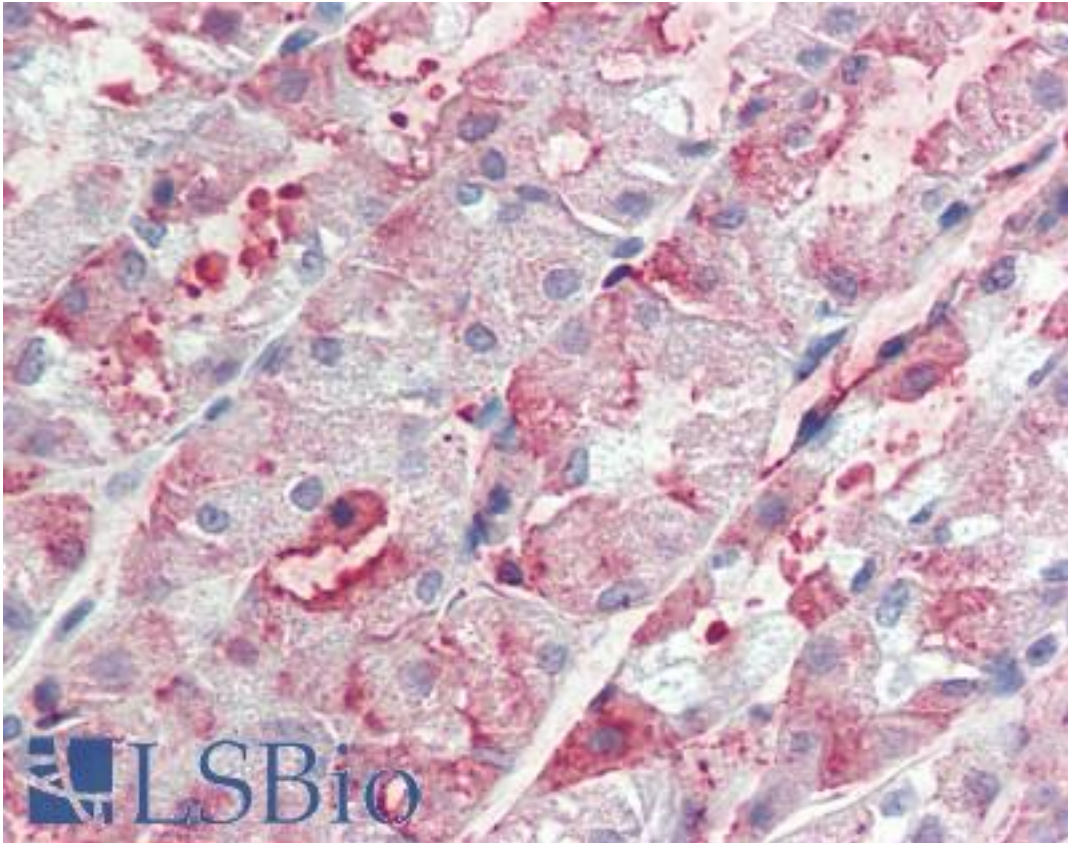


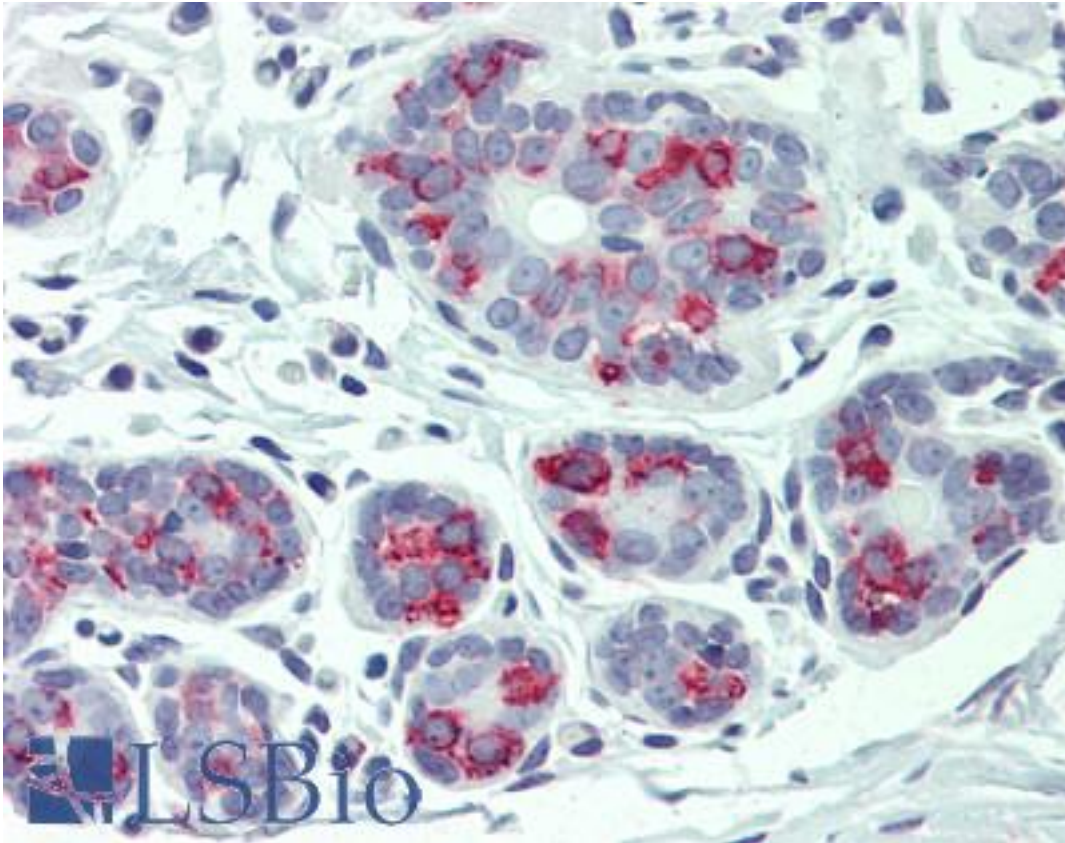
ITGA6/Integrin Alpha 6/CD49f Rabbit anti-Human Polyclonal (Internal) Antibody - LS-A8769 - LSBio	
CatalogID:	LS-A8769
Target:	integrin, alpha 6 (ITGA6)
Synonyms:	ITGA6 Antibody, CD49f Antibody, CD49f antigen Antibody, Integrin alpha6B Antibody, Integrin, alpha 6 Antibody, Integrin alpha-6 precursor Antibody, VLA-6 Antibody, Integrin alpha-6 Antibody, ITGA6B Antibody
Family / Subfamily:	Integrin / not assigned-Integrin
Host	ITGA6 antibody was produced in Rabbit
Clonality:	Polyclonal
Immunogen Species:	ITGA6/Integrin Alpha 6/CD49f antibody was raised against Human
Antigen Type:	Synthetic peptide
Immunogen:	ITGA6/Integrin Alpha 6/CD49f antibody was raised against synthetic 15 amino acid peptide from internal region of human ITGA6 / CD49f. Percent identity with other species by BLAST analysis: Human, Chimpanzee, Gorilla, Orangutan, Gibbon, Monkey, Horse (100%); Marmoset, Bovine, Bat, Pig (93%); Galago, Mouse, Opossum (87%); Rat, Hamster, Panda, Rabbit, Guinea pig (80%).
Specificity:	Human ITGA6 / CD49f. BLAST analysis of the peptide immunogen showed no homology with other human proteins.
Epitope:	Internal
Reactivity:	Human, Chimpanzee, Gorilla, Orangutan, Gibbon, Horse
Predicted Reactivity:	Monkey, Bat, Bovine, Pig
Purification:	Immunoaffinity purified
Presentation:	PBS, 0.1% sodium azide.
Recommended Storage:	Long term: -70°C; Short term: +4°C
Uses:	IHC - Paraffin (15 µg/ml) (Optimal dilution to be determined by the researcher)
Size:	50 µg
Concentration:	1 mg/ml

Immunohistochemistry Image:



Anti-ITGA6 / CD49f antibody LS-A8769 IHC of human stomach. Immunohistochemistry of formalin-fixed, paraffin-embedded tissue after heat-induced antigen retrieval.

Immunohistochemistry Image:



Anti-ITGA6 / CD49f antibody LS-A8769 IHC of human breast. Immunohistochemistry of formalin-fixed, paraffin-embedded tissue after heat-induced antigen retrieval.

Requested From:

Japan

Laboratory Reagent For In Vitro Research Use Only

Not for resale without prior written consent from LifeSpan BioSciences, Inc.

Created on 9/23/2014

© 2014 LifeSpan BioSciences