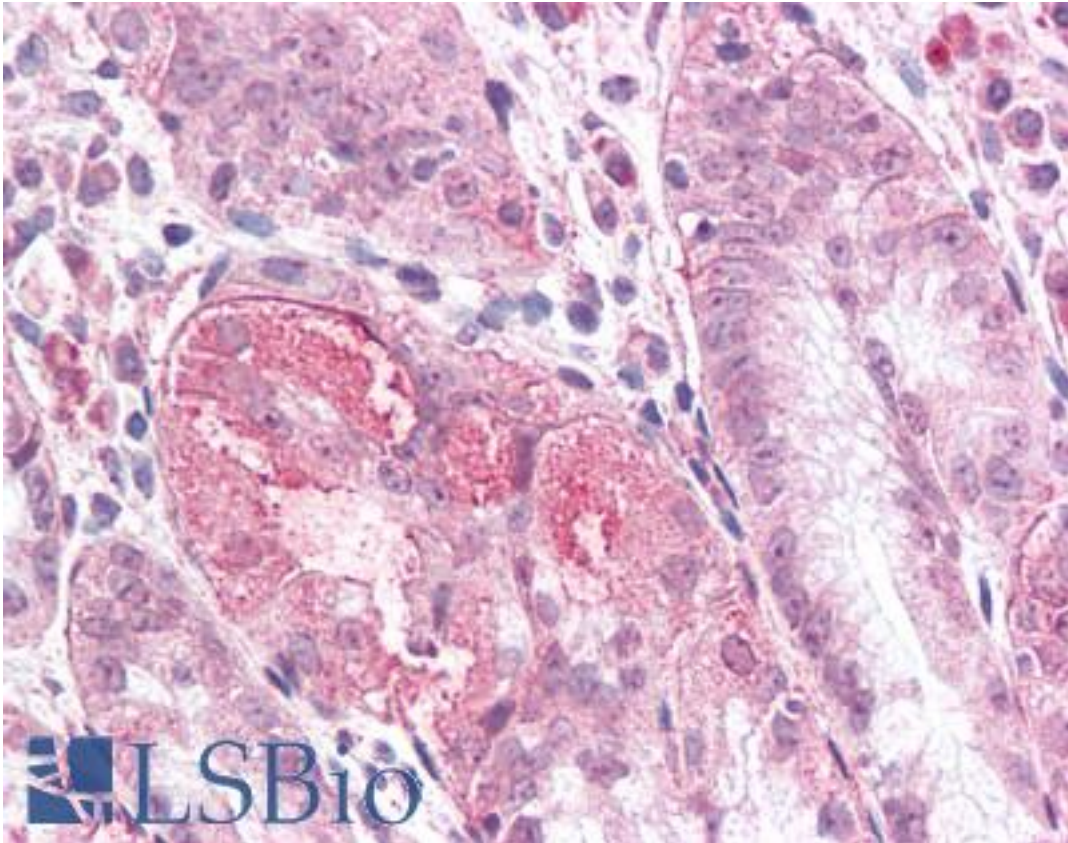


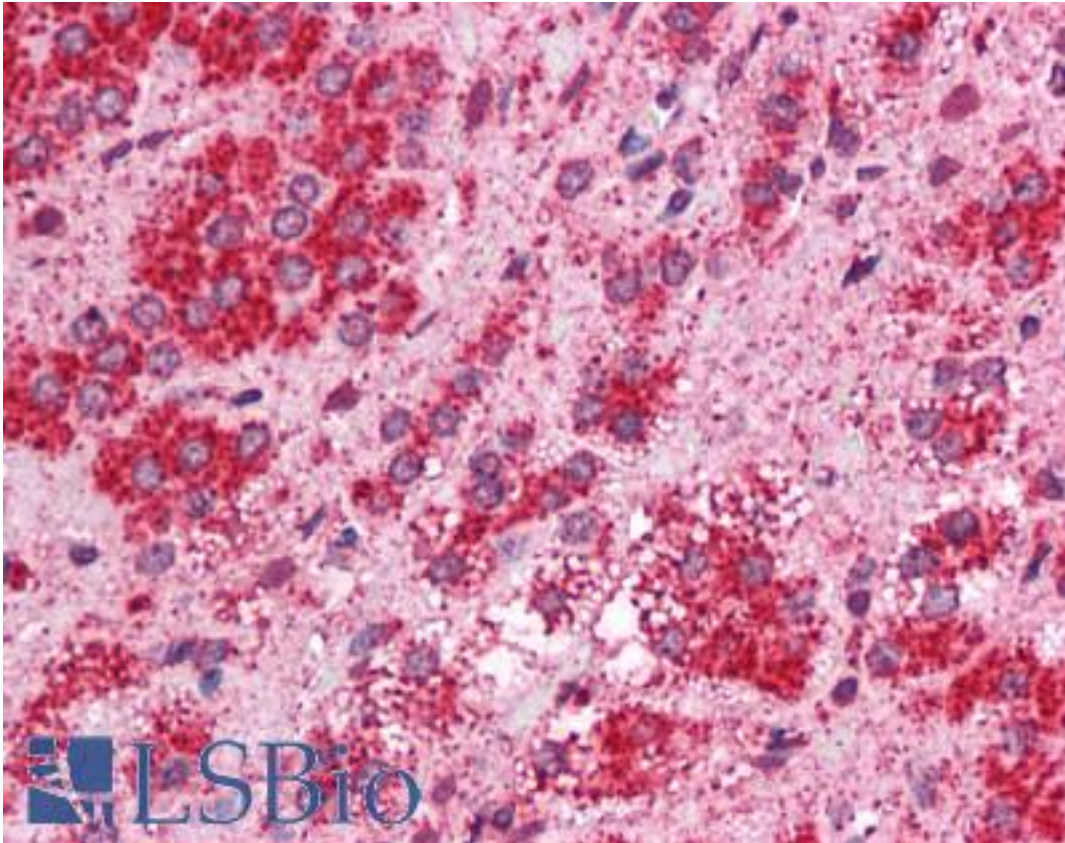
TMEM33 Rabbit anti-Human Polyclonal (Internal) Antibody - LS-A8765 - LSBio	
CatalogID:	LS-A8765
Target:	transmembrane protein 33 (TMEM33)
Synonyms:	TMEM33 Antibody, DB83 Antibody, Protein DB83 Antibody, SHINC3 Antibody, Transmembrane protein 33 Antibody
Host	TMEM33 antibody was produced in Rabbit
Clonality:	Polyclonal
Immunogen Species:	TMEM33 antibody was raised against Human
Antigen Type:	Synthetic peptide
Immunogen:	TMEM33 antibody was raised against synthetic 18 amino acid peptide from internal region of human TMEM33. Percent identity with other species by BLAST analysis: Human, Gorilla, Gibbon, Monkey, Marmoset, Opossum, Chicken (100%); Mouse, Rat, Dog, Bat, Hamster, Panda, Horse, Pig, Turkey, Lizard (94%); Rabbit, Platypus (89%); Bovine, Elephant, Xenopus, Salmon (83%).
Specificity:	Human TMEM33. BLAST analysis of the peptide immunogen showed no homology with other human proteins.
Epitope:	Internal
Reactivity:	Human, Gorilla, Gibbon, Monkey, Chicken
Predicted Reactivity:	Mouse, Rat, Bat, Dog, Hamster, Horse, Pig
Purification:	Immunoaffinity purified
Presentation:	PBS, 0.1% sodium azide.
Recommended Storage:	Short term 4°C, long term aliquot and store at -20°C, avoid freeze thaw cycles.
Uses:	IHC - Paraffin (15 - 20 µg/ml) (Optimal dilution to be determined by the researcher)
Size:	50 µg
Concentration:	1 mg/ml

Immunohistochemistry Image:



Anti-TMEM33 antibody LS-A8765 IHC of human stomach. Immunohistochemistry of formalin-fixed, paraffin-embedded tissue after heat-induced antigen retrieval.

Immunohistochemistry Image:



Anti-TMEM33 antibody LS-A8765 IHC of human adrenal. Immunohistochemistry of formalin-fixed, paraffin-embedded tissue after heat-induced antigen retrieval.

Requested From:

Japan

Laboratory Reagent For In Vitro Research Use Only

Not for resale without prior written consent from LifeSpan BioSciences, Inc.

Created on 9/23/2014

© 2014 LifeSpan BioSciences