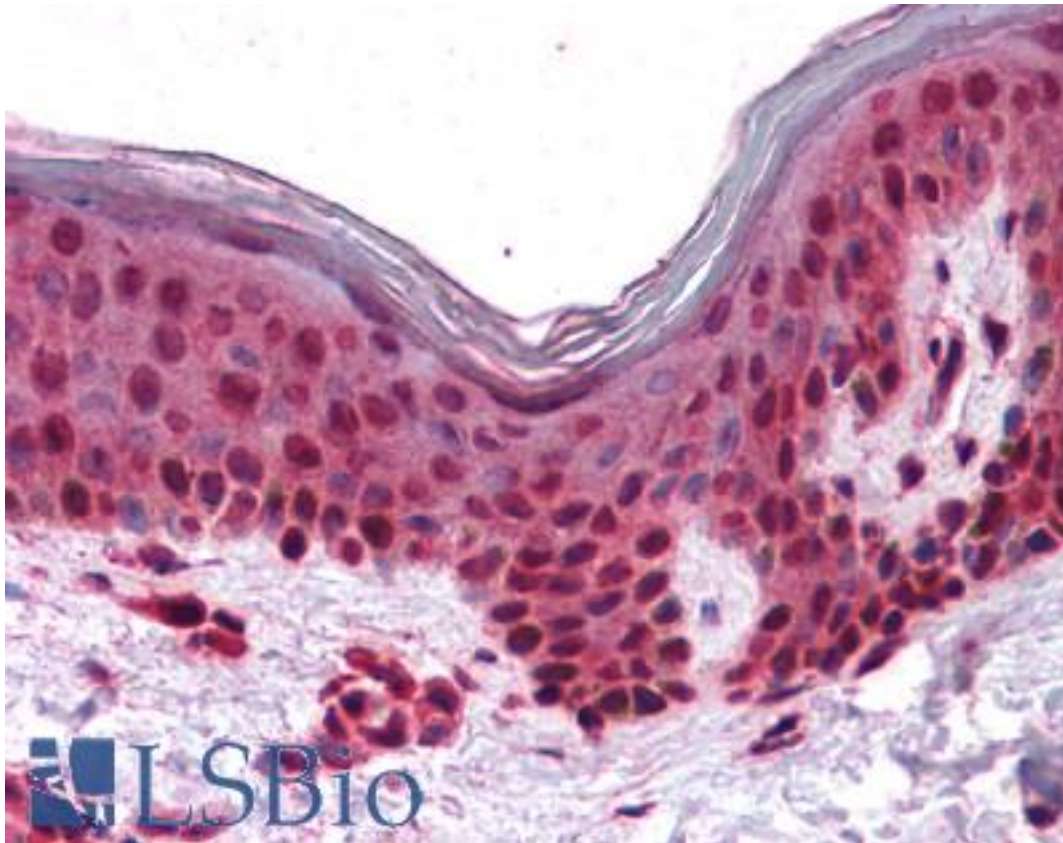


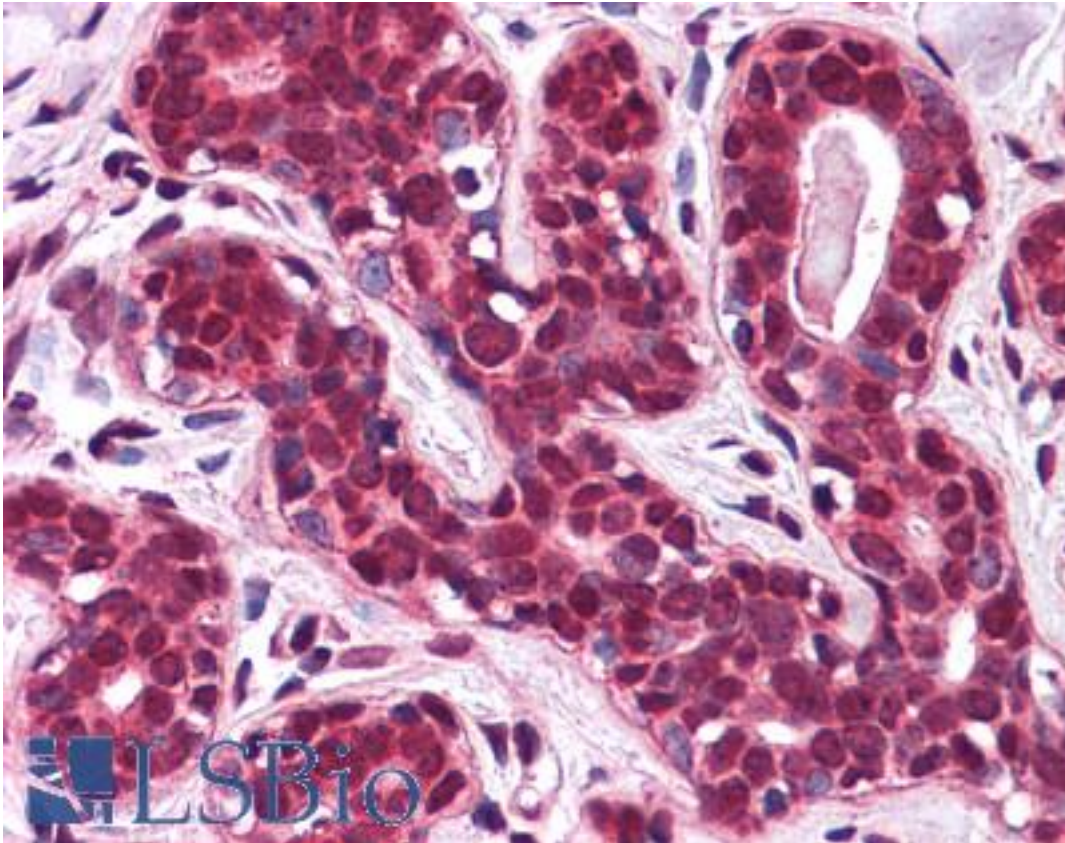
SLC5A6 / SMVT Rabbit anti-Human Polyclonal (N-Terminus) Antibody - LS-A8754 - LSBio	
CatalogID:	LS-A8754
Target:	solute carrier family 5 (sodium/multivitamin and iodide cotransporter), member 6 (SLC5A6)
Synonyms:	SLC5A6 Antibody, SMVT Antibody
Family / Subfamily:	Transporter / Solute:sodium symporter
Host	SLC5A6 antibody was produced in Rabbit
Clonality:	Polyclonal
Immunogen Species:	SLC5A6 / SMVT antibody was raised against Human
Antigen Type:	Synthetic peptide
Immunogen:	SLC5A6 / SMVT antibody was raised against synthetic 19 amino acid peptide from N-terminus of human SLC5A6. Percent identity with other species by BLAST analysis: Human, Gorilla, Rat (100%); Monkey, Mouse, Hamster (95%); Marmoset (89%); Bat, Elephant, Panda, Rabbit, Horse (84%).
Specificity:	Human SLC5A6. BLAST analysis of the peptide immunogen showed no homology with other human proteins.
Epitope:	N-Terminus
Reactivity:	Human, Gorilla, Rat
Predicted Reactivity:	Monkey, Mouse, Hamster
Purification:	Immunoaffinity purified
Presentation:	PBS, 0.1% sodium azide.
Recommended Storage:	Short term 4°C, long term aliquot and store at -20°C, avoid freeze thaw cycles.
Uses:	IHC - Paraffin (10 - 15 µg/ml) (Optimal dilution to be determined by the researcher)
Size:	50 µg
Concentration:	1 mg/ml

Immunohistochemistry Image:



Anti-SLC5A6 antibody LS-A8754 IHC of human skin. Immunohistochemistry of formalin-fixed, paraffin-embedded tissue after heat-induced antigen retrieval.

Immunohistochemistry Image:



Anti-SLC5A6 antibody LS-A8754 IHC of human breast. Immunohistochemistry of formalin-fixed, paraffin-embedded tissue after heat-induced antigen retrieval.

Requested From:

Japan

Laboratory Reagent For In Vitro Research Use Only

Not for resale without prior written consent from LifeSpan BioSciences, Inc.

Created on 9/23/2014

© 2014 LifeSpan BioSciences