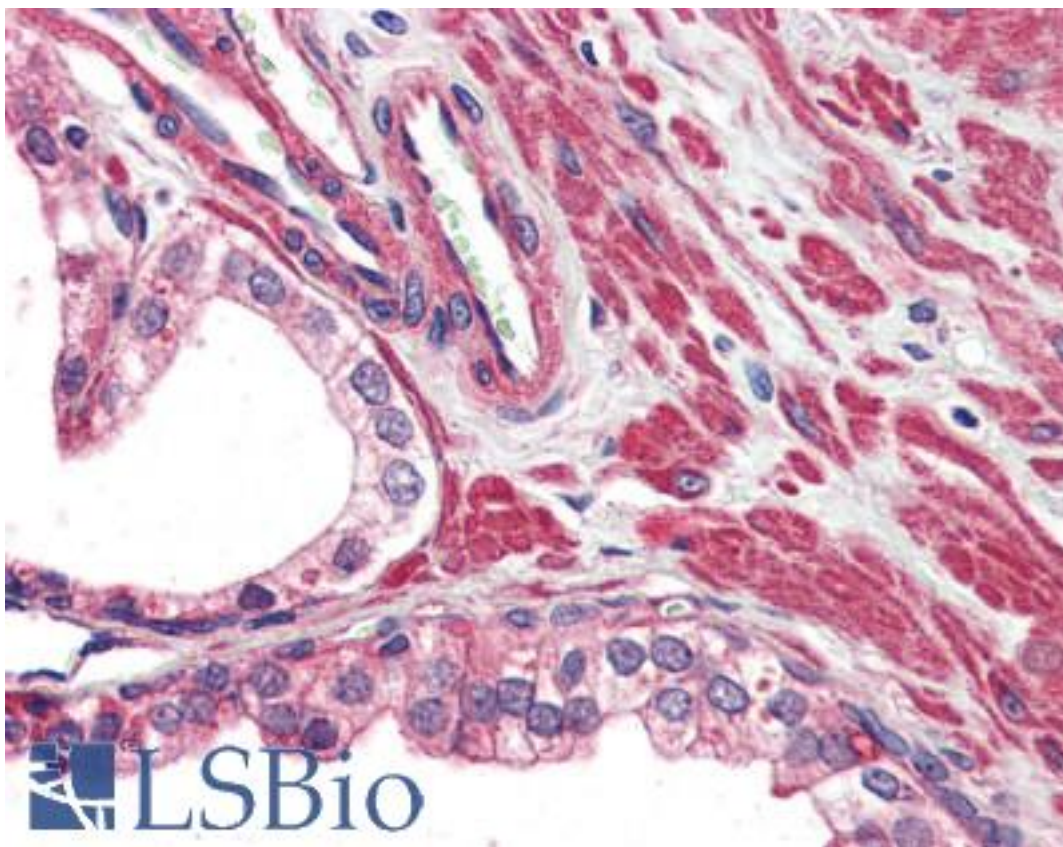


VRL1 / TRPV2 Rabbit anti-Human Polyclonal (Internal) Antibody - LS-A8739 - LSBio

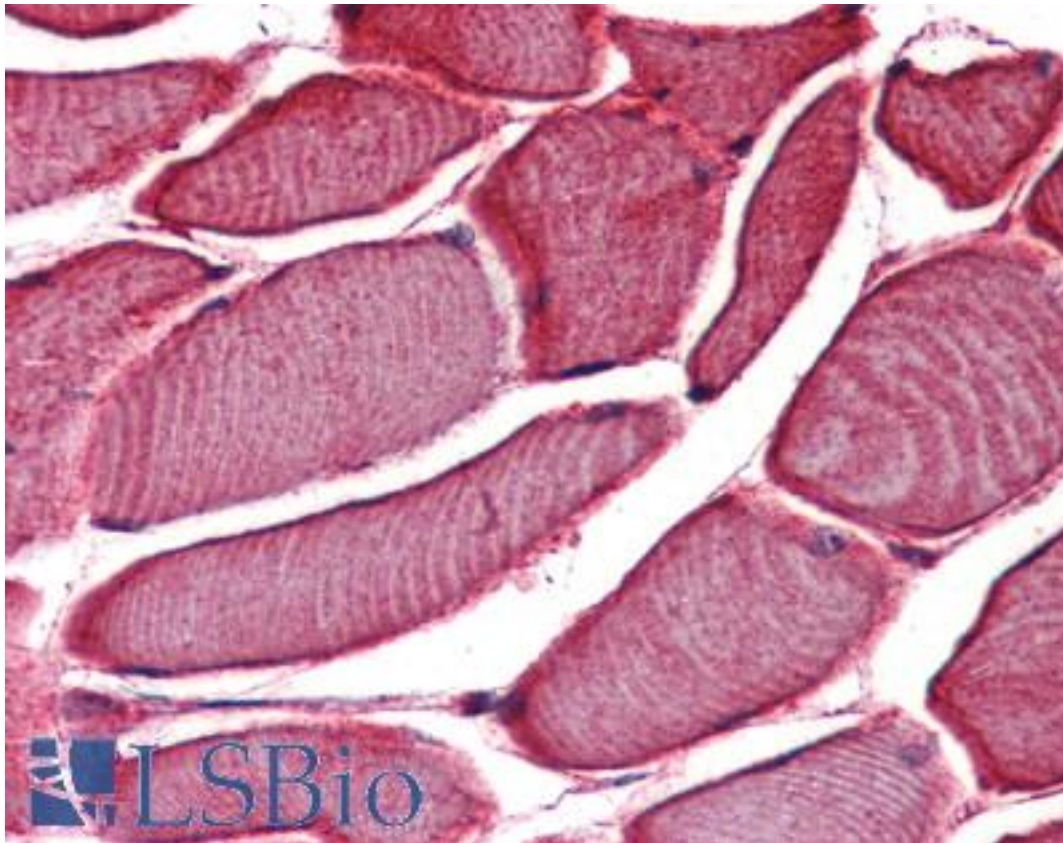
CatalogID:	LS-A8739
Target:	transient receptor potential cation channel, subfamily V, member 2 (TRPV2)
Synonyms:	TRPV2 Antibody, GRC Antibody, OTRPC2 Antibody, Osm-9-like TRP channel 2 Antibody, VRL-1 Antibody, VRL1 Antibody, VRL Antibody
Family / Subfamily:	Ion Channel / Calcium channel - TRP
Host	TRPV2 antibody was produced in Rabbit
Clonality:	Polyclonal
Immunogen Species:	VRL1 / TRPV2 antibody was raised against Human
Antigen Type:	Synthetic peptide
Immunogen:	VRL1 / TRPV2 antibody was raised against synthetic 15 amino acid peptide from internal region of human TRPV2. Percent identity with other species by BLAST analysis: Human (100%); Chimpanzee, Orangutan (93%); Gibbon, Monkey (80%).
Specificity:	Human TRPV2. BLAST analysis of the peptide immunogen showed no homology with other human proteins.
Epitope:	Internal
Reactivity:	Human
Predicted Reactivity:	Chimpanzee, Orangutan
Purification:	Immunoaffinity purified
Presentation:	PBS, 0.1% sodium azide.
Recommended Storage:	Long term: -70°C; Short term: +4°C
Usage Summary:	Antigen retrieval requires Proteinase K treatment.
Uses:	IHC - Paraffin (5 µg/ml) (Optimal dilution to be determined by the researcher)
Size:	50 µg
Concentration:	1 mg/ml

Immunohistochemistry Image:



Anti-TRPV2 antibody LS-A8739 IHC of human prostate. Immunohistochemistry of formalin-fixed, paraffin-embedded tissue after heat-induced antigen retrieval.

Immunohistochemistry Image:



Anti-TRPV2 antibody LS-A8739 IHC of human skeletal muscle. Immunohistochemistry of formalin-fixed, paraffin-embedded tissue after heat-induced antigen retrieval.

Requested From:

Japan

Laboratory Reagent For In Vitro Research Use Only

Not for resale without prior written consent from LifeSpan BioSciences, Inc.

Created on 9/23/2014

© 2014 LifeSpan BioSciences