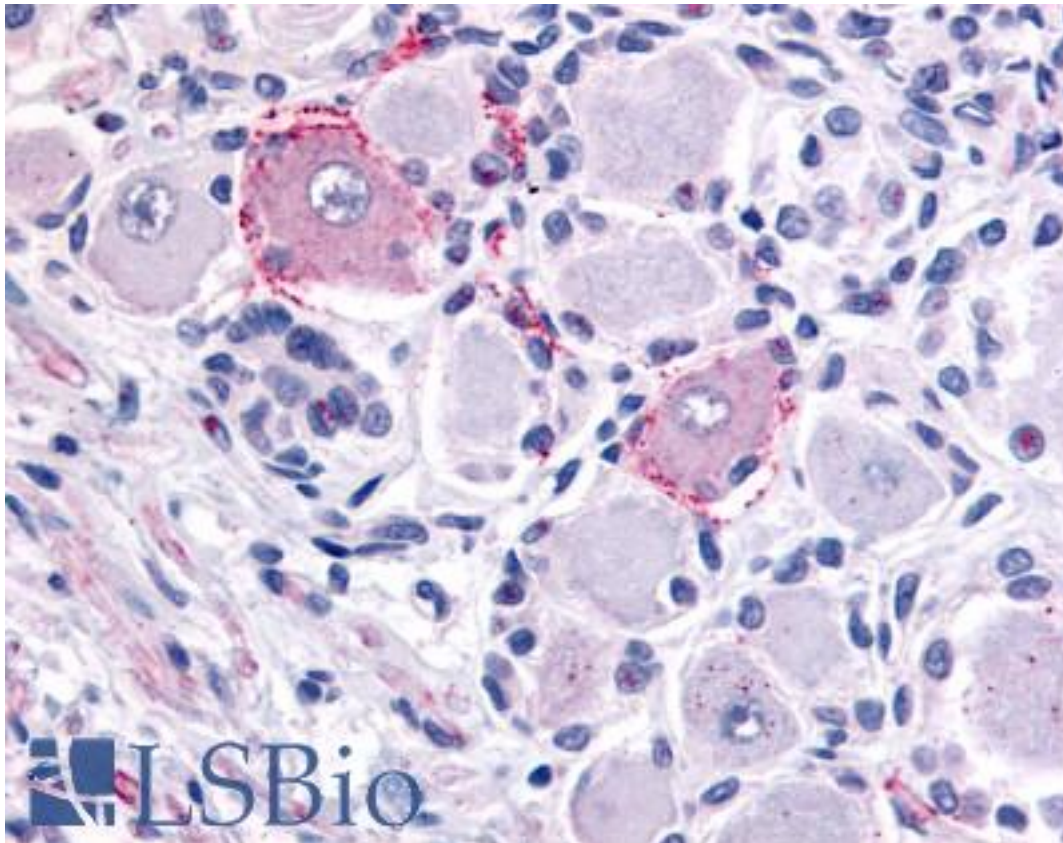


VRL1 / TRPV2 Rabbit anti-Human Polyclonal (Internal) Antibody - LS-A8738 - LSBio

| | |
|------------------------------|---|
| CatalogID: | LS-A8738 |
| Target: | transient receptor potential cation channel, subfamily V, member 2 (TRPV2) |
| Synonyms: | TRPV2 Antibody, GRC Antibody, OTRPC2 Antibody, Osm-9-like TRP channel 2 Antibody, VRL-1 Antibody, VRL1 Antibody, VRL Antibody |
| Family / Subfamily: | Ion Channel / Calcium channel - TRP |
| Host | TRPV2 antibody was produced in Rabbit |
| Clonality: | Polyclonal |
| Immunogen Species: | VRL1 / TRPV2 antibody was raised against Human |
| Antigen Type: | Synthetic peptide |
| Immunogen: | VRL1 / TRPV2 antibody was raised against synthetic 15 amino acid peptide from internal region of human TRPV2. Percent identity with other species by BLAST analysis: Human, Gorilla, Gibbon (100%); Monkey (93%); Marmoset (87%). |
| Specificity: | Human TRPV2. BLAST analysis of the peptide immunogen showed no homology with other human proteins. |
| Epitope: | Internal |
| Reactivity: | Human, Gorilla, Gibbon |
| Predicted Reactivity: | Monkey |
| Purification: | Immunoaffinity purified |
| Presentation: | PBS, 0.1% sodium azide. |
| Recommended Storage: | Long term: -70°C; Short term: +4°C |
| Uses: | IHC - Paraffin (5 - 10 µg/ml) (Optimal dilution to be determined by the researcher) |
| Size: | 50 µg |
| Concentration: | 1 mg/ml |

Immunohistochemistry Image:



Anti-TRPV2 antibody LS-A8738 IHC of human dorsal root ganglion. Immunohistochemistry of formalin-fixed, paraffin-embedded tissue after heat-induced antigen retrieval.

| | |
|------------------------|-------|
| Requested From: | Japan |
|------------------------|-------|

Laboratory Reagent For In Vitro Research Use Only

Not for resale without prior written consent from LifeSpan BioSciences, Inc.

Created on 9/23/2014

© 2014 LifeSpan BioSciences