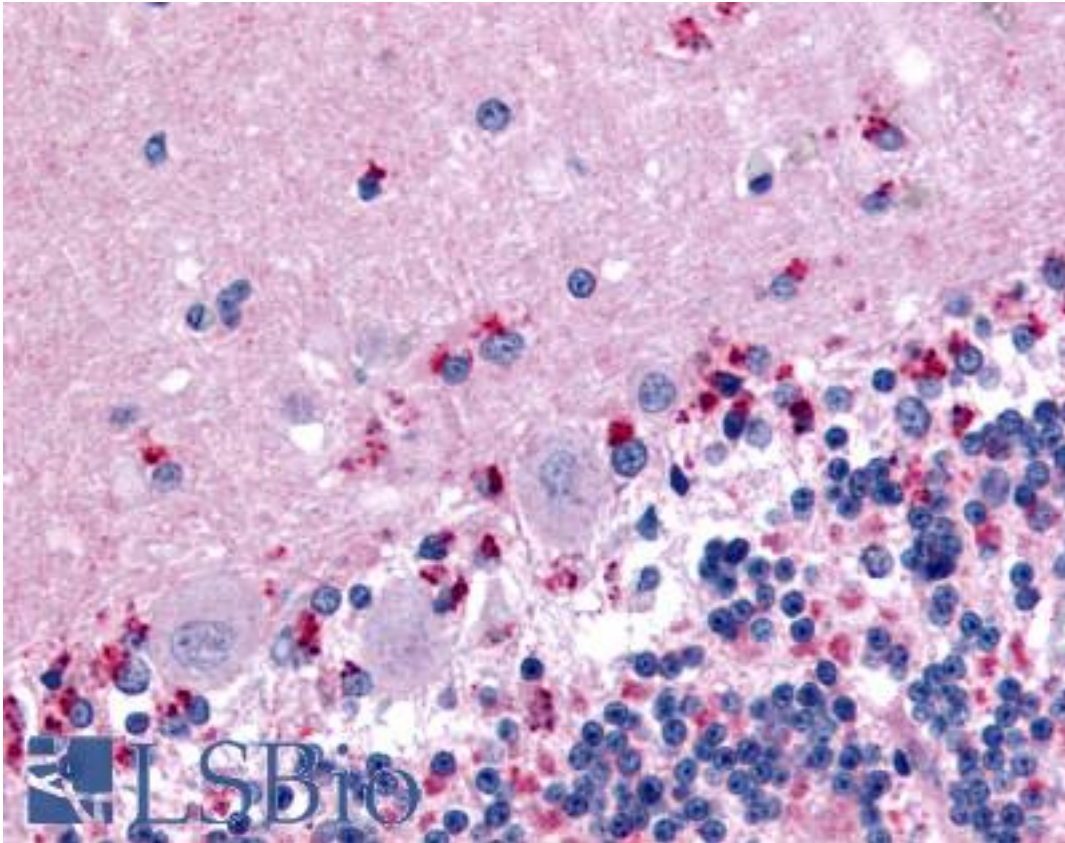


**WNT2B Rabbit anti-Human Polyclonal (N-Terminus) Antibody - LS-A8734 - LSBio**

<b>CatalogID:</b>	LS-A8734
<b>Target:</b>	wingless-type MMTV integration site family, member 2B (WNT2B)
<b>Synonyms:</b>	WNT2B Antibody, Protein Wnt-2b Antibody, XWNT2 Antibody, Protein Wnt-13 Antibody, WNT13 Antibody, XWNT2, Xenopus, homolog of Antibody
<b>Family / Subfamily:</b>	WNT / not assigned-WNT
<b>Host</b>	WNT2B antibody was produced in Rabbit
<b>Clonality:</b>	Polyclonal
<b>Immunogen Species:</b>	WNT2B antibody was raised against Human
<b>Antigen Type:</b>	Synthetic peptide
<b>Immunogen:</b>	WNT2B antibody was raised against synthetic 14 amino acid peptide from near N-terminus of human WNT2B. Percent identity with other species by BLAST analysis: Human, Gorilla, Gibbon, Monkey, Marmoset, Mouse, Rat, Hamster, Elephant, Panda, Bovine, Dog, Bat, Horse, Rabbit, Pig, Platypus (100%); Opossum, Chicken (86%).
<b>Specificity:</b>	Human WNT2B. BLAST analysis of the peptide immunogen showed no homology with other human proteins.
<b>Epitope:</b>	N-Terminus
<b>Reactivity:</b>	Human, Gorilla, Gibbon, Monkey, Mouse, Rat, Bat, Bovine, Dog, Hamster, Horse, Pig, Rabbit
<b>Purification:</b>	Immunoaffinity purified
<b>Presentation:</b>	PBS, 0.1% sodium azide.
<b>Recommended Storage:</b>	Long term: -70°C; Short term: +4°C
<b>Uses:</b>	IHC - Paraffin (1.25 - 2.5 µg/ml) (Optimal dilution to be determined by the researcher)
<b>Size:</b>	50 µg
<b>Concentration:</b>	1 mg/ml

**Immunohistochemistry Image:**



Anti-WNT2B antibody LS-A8734 IHC of human brain, cerebellum. Immunohistochemistry of formalin-fixed, paraffin-embedded tissue after heat-induced antigen retrieval.

**Requested From:**

Japan

Laboratory Reagent For In Vitro Research Use Only

Not for resale without prior written consent from LifeSpan BioSciences, Inc.

Created on 9/23/2014

© 2014 LifeSpan BioSciences