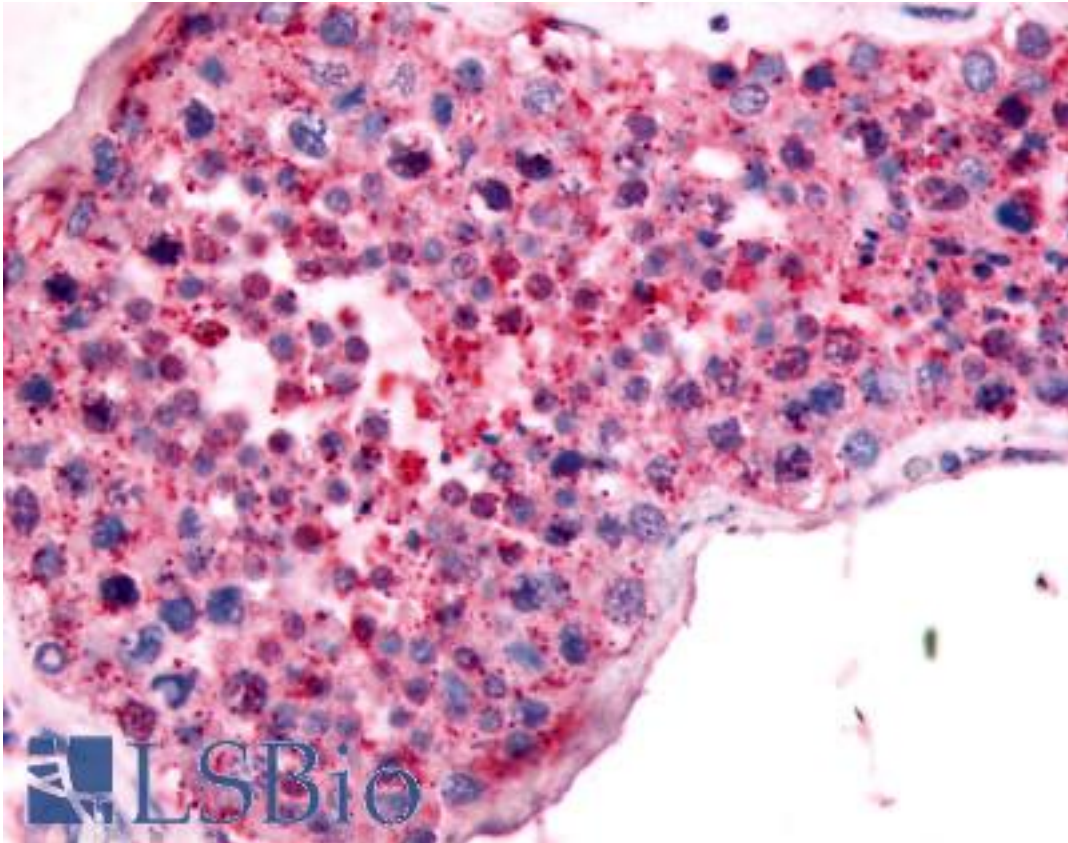


UCHL3 Rabbit anti-Human Polyclonal (C-Terminus) Antibody - LS-A8724 - LSBio

CatalogID:	LS-A8724
Target:	ubiquitin carboxyl-terminal esterase L3 (ubiquitin thiolesterase) (UCHL3)
Synonyms:	UCHL3 Antibody, Ubiquitin thiolesterase Antibody, Ubiquitin thioesterase L3 Antibody, UCH-L3 Antibody
Family / Subfamily:	Protease / Cysteine C12
Host	UCHL3 antibody was produced in Rabbit
Clonality:	Polyclonal
Immunogen Species:	UCHL3 antibody was raised against Human
Antigen Type:	Synthetic peptide
Immunogen:	UCHL3 antibody was raised against synthetic 15 amino acid peptide from near C-terminus of human UCHL3. Percent identity with other species by BLAST analysis: Human, Gorilla, Gibbon, Monkey, Mouse, Rat, Hamster, Elephant, Panda, Dog, Bovine, Horse, Rabbit, Pig, Lizard (100%); Opossum, Turkey, Chicken (93%); Xenopus, Zebrafish, Drosophila (80%).
Specificity:	Human UCHL3. BLAST analysis of the peptide immunogen showed no homology with other human proteins.
Epitope:	C-Terminus
Reactivity:	Human, Gorilla, Gibbon, Monkey, Mouse, Rat, Bovine, Dog, Hamster, Horse, Pig, Rabbit
Predicted Reactivity:	Chicken
Purification:	Immunoaffinity purified
Presentation:	PBS, 0.1% sodium azide.
Recommended Storage:	Long term: -70°C; Short term: +4°C
Uses:	IHC - Paraffin (5 - 10 µg/ml) (Optimal dilution to be determined by the researcher)
Size:	50 µg
Concentration:	1 mg/ml

Immunohistochemistry Image:



Anti-UCHL3 antibody LS-A8724 IHC of human testis. Immunohistochemistry of formalin-fixed, paraffin-embedded tissue after heat-induced antigen retrieval.

Requested From:

Japan

Laboratory Reagent For In Vitro Research Use Only

Not for resale without prior written consent from LifeSpan BioSciences, Inc.

Created on 9/23/2014

© 2014 LifeSpan BioSciences