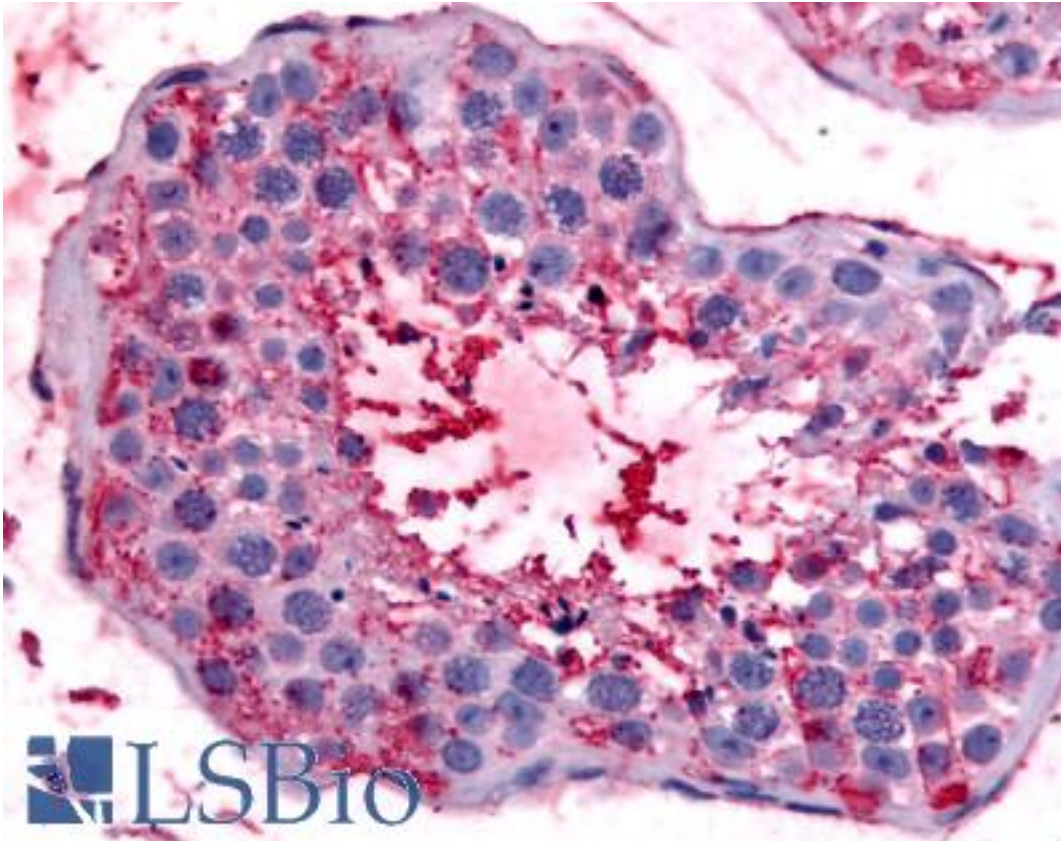


BEST2 / Bestrophin-2 Rabbit anti-Human Polyclonal (Internal) Antibody - LS-A8721 - LSBio	
CatalogID:	LS-A8721
Target:	bestrophin 2 (BEST2)
Synonyms:	BEST2 Antibody, Bestrophin-2 Antibody, Bestrophin 2 Antibody, Hbest2 Antibody, VMD2-like gene 1 Antibody, VMD2L1 Antibody
Family / Subfamily:	Ion channel / Bestrophin
Host	BEST2 antibody was produced in Rabbit
Clonality:	Polyclonal
Immunogen Species:	BEST2 / Bestrophin-2 antibody was raised against Human
Antigen Type:	Synthetic peptide
Immunogen:	BEST2 / Bestrophin-2 antibody was raised against synthetic 17 amino acid peptide from internal region of human BEST2 / Bestrophin-2. Percent identity with other species by BLAST analysis: Human, Gorilla, Gibbon, Monkey, Mouse, Rat, Hamster, Bovine, Pig (100%); Panda, Dog, Bat, Rabbit, Opossum (94%); Marmoset (88%).
Specificity:	Human BEST2 / Bestrophin-2. BLAST analysis of the peptide immunogen showed no homology with other human proteins, except BEST3 (59%).
Epitope:	Internal
Reactivity:	Human, Gorilla, Gibbon, Monkey, Mouse, Rat, Bovine, Hamster, Pig
Predicted Reactivity:	Bat, Dog, Rabbit
Purification:	Immunoaffinity purified
Presentation:	PBS, 0.1% sodium azide.
Recommended Storage:	Long term: -70°C; Short term: +4°C
Uses:	IHC - Paraffin (2.5 - 5 µg/ml) (Optimal dilution to be determined by the researcher)
Size:	50 µg
Concentration:	1 mg/ml

Immunohistochemistry Image:



Anti-BEST2 / Bestrophin-2 antibody LS-A8721 IHC of human testis. Immunohistochemistry of formalin-fixed, paraffin-embedded tissue after heat-induced antigen retrieval.

Requested From:

Japan

Laboratory Reagent For In Vitro Research Use Only

Not for resale without prior written consent from LifeSpan BioSciences, Inc.

Created on 9/23/2014

© 2014 LifeSpan BioSciences