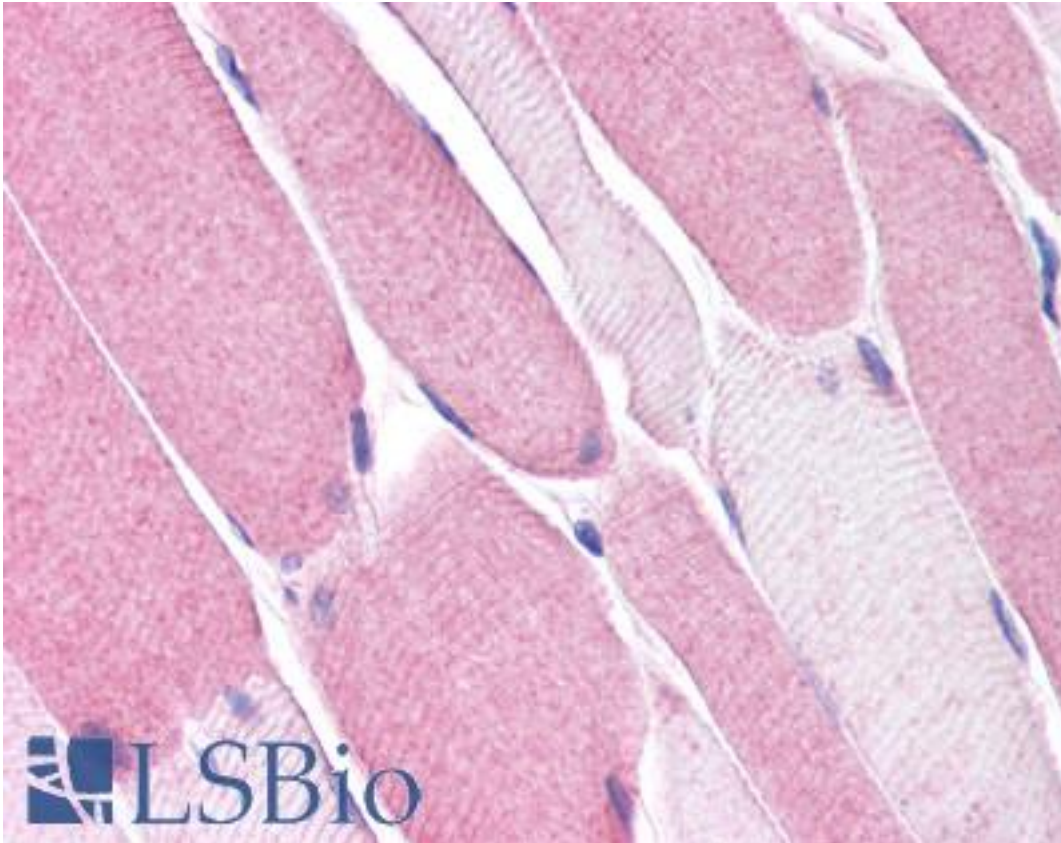


**VMD2L3 / BEST3 Rabbit anti-Human Polyclonal (Internal) Antibody - LS-A8638 - LSBio**

<b>CatalogID:</b>	LS-A8638
<b>Target:</b>	bestrophin 3 (BEST3)
<b>Synonyms:</b>	BEST3 Antibody, Bestrophin-3 Antibody, VMD2L3 Antibody, Bestrophin 3 Antibody
<b>Family / Subfamily:</b>	Ion channel / Bestrophin
<b>Host</b>	BEST3 antibody was produced in Rabbit
<b>Clonality:</b>	Polyclonal
<b>Immunogen Species:</b>	VMD2L3 / BEST3 antibody was raised against Human
<b>Antigen Type:</b>	Synthetic peptide
<b>Immunogen:</b>	VMD2L3 / BEST3 antibody was raised against synthetic 20 amino acid peptide from internal region of human BEST3. Percent identity with other species by BLAST analysis: Human, Gorilla, Gibbon, Monkey (100%); Marmoset, Bat (95%); Hamster, Elephant, Panda, Bovine, Pig (90%); Dog, Rabbit (85%); Mouse, Rat, Horse, Platypus (80%).
<b>Specificity:</b>	Human BEST3. BLAST analysis of the peptide immunogen showed no homology with other human proteins.
<b>Epitope:</b>	Internal
<b>Reactivity:</b>	Human, Gorilla, Gibbon
<b>Predicted Reactivity:</b>	Monkey, Bat, Bovine, Hamster, Pig
<b>Purification:</b>	Immunoaffinity purified
<b>Presentation:</b>	PBS, 0.1% sodium azide.
<b>Recommended Storage:</b>	Long term: -70°C; Short term: +4°C
<b>Uses:</b>	IHC - Paraffin (2.5 - 5 µg/ml) (Optimal dilution to be determined by the researcher)
<b>Size:</b>	50 µg
<b>Concentration:</b>	1 mg/ml

**Immunohistochemistry Image:**



Anti-BEST3 antibody LS-A8638 IHC of human skeletal muscle. Immunohistochemistry of formalin-fixed, paraffin-embedded tissue after heat-induced antigen retrieval.

**Requested From:**

Japan

Laboratory Reagent For In Vitro Research Use Only

Not for resale without prior written consent from LifeSpan BioSciences, Inc.

Created on 9/23/2014

© 2014 LifeSpan BioSciences