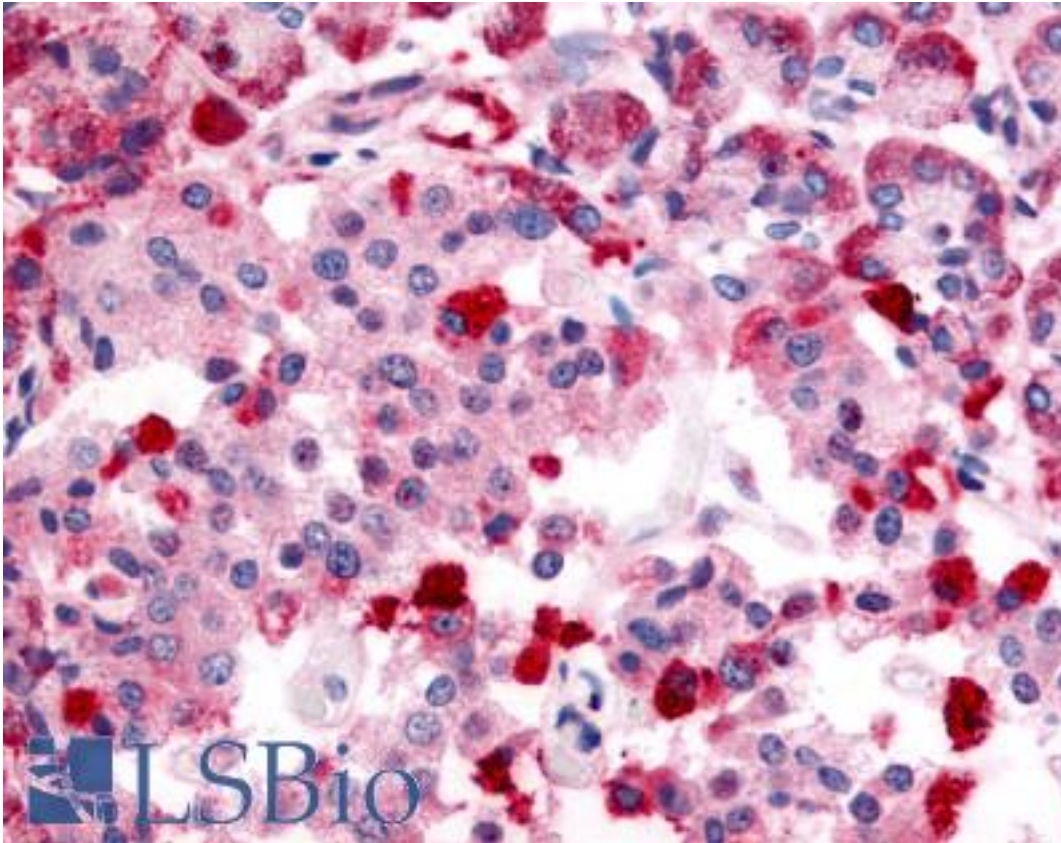


TRPM4 Rabbit anti-Human Polyclonal (Internal) Antibody - LS-A8605 - LSBio	
CatalogID:	LS-A8605
Target:	transient receptor potential cation channel, subfamily M, member 4 (TRPM4)
Synonyms:	TRPM4 Antibody, HTRPM4 Antibody, LTrpC-4 Antibody, PFHB1B Antibody, Melastatin-4 Antibody, TRPM4B Antibody, LTrpC4 Antibody
Family / Subfamily:	Ion Channel / Calcium channel - TRP
Host	TRPM4 antibody was produced in Rabbit
Clonality:	Polyclonal
Immunogen Species:	TRPM4 antibody was raised against Human
Antigen Type:	Synthetic peptide
Immunogen:	TRPM4 antibody was raised against synthetic 16 amino acid peptide from internal region of human TRPM4. Percent identity with other species by BLAST analysis: Human, Gorilla, Mouse, Rat, Bovine (100%); Gibbon (94%); Panda, Dog (88%); Elephant (81%).
Specificity:	Human TRPM4. BLAST analysis of the peptide immunogen showed no homology with other human proteins.
Epitope:	Internal
Reactivity:	Human, Gorilla, Mouse, Rat, Bovine
Predicted Reactivity:	Gibbon
Purification:	Immunoaffinity purified
Presentation:	PBS, 0.1% sodium azide.
Recommended Storage:	Long term: -70°C; Short term: +4°C
Uses:	IHC - Paraffin (2.5 - 5 µg/ml) (Optimal dilution to be determined by the researcher)
Size:	50 µg
Concentration:	1 mg/ml

Immunohistochemistry Image:



Anti-TRPM4 antibody LS-A8605 IHC of human pancreas. Immunohistochemistry of formalin-fixed, paraffin-embedded tissue after heat-induced antigen retrieval.

Requested From:

Japan

Laboratory Reagent For In Vitro Research Use Only

Not for resale without prior written consent from LifeSpan BioSciences, Inc.

Created on 9/23/2014

© 2014 LifeSpan BioSciences