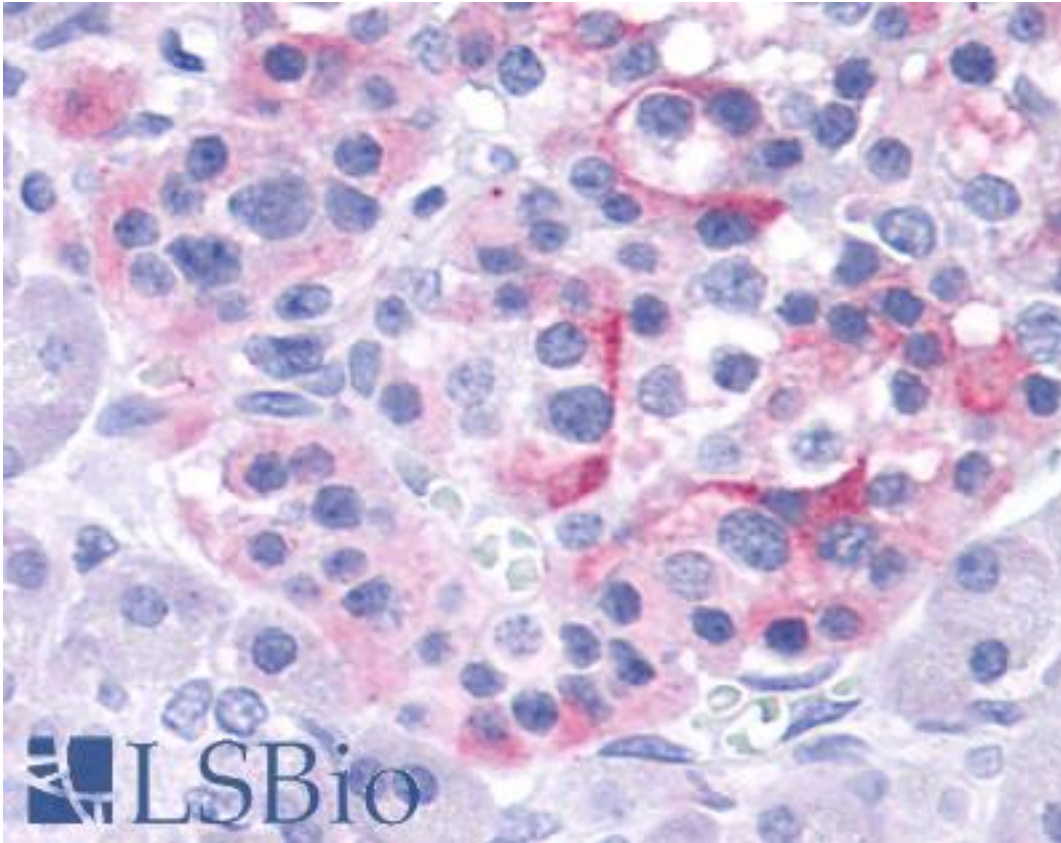


TRPV4 Rabbit anti-Human Polyclonal (Internal) Antibody - LS-A8583 - LSBio	
CatalogID:	LS-A8583
Target:	transient receptor potential cation channel, subfamily V, member 4 (TRPV4)
Synonyms:	TRPV4 Antibody, CMT2C Antibody, HMSN2C Antibody, OTRPC4 Antibody, SSQTL1 Antibody, VR-OAC Antibody, VRL-2 Antibody, Osm-9-like TRP channel 4 Antibody, SPSMA Antibody, TRP12 Antibody, VRL2 Antibody, VROAC Antibody, SMAL Antibody
Family / Subfamily:	Ion Channel / Calcium channel - TRP
Host	TRPV4 antibody was produced in Rabbit
Clonality:	Polyclonal
Immunogen Species:	TRPV4 antibody was raised against Human
Antigen Type:	Synthetic peptide
Immunogen:	TRPV4 antibody was raised against synthetic 20 amino acid peptide from internal region of human TRPV4. Percent identity with other species by BLAST analysis: Human, Gorilla, Gibbon, Monkey, Marmoset, Mouse, Rat, Hamster, Panda, Bovine, Dog, Horse, Pig (100%); Elephant, Rabbit (95%); Turkey, Chicken, Platypus (90%); Xenopus (85%); Stickleback, Zebrafish (80%).
Specificity:	Human TRPV4. BLAST analysis of the peptide immunogen showed no homology with other human proteins.
Epitope:	Internal
Reactivity:	Human, Gorilla, Gibbon, Monkey, Mouse, Rat, Bovine, Dog, Hamster, Horse, Pig
Predicted Reactivity:	Rabbit, Chicken
Purification:	Immunoaffinity purified
Presentation:	PBS, 0.1% sodium azide.
Recommended Storage:	Long term: -70°C; Short term: +4°C
Uses:	IHC - Paraffin (5 - 7.5 µg/ml) (Optimal dilution to be determined by the researcher)
Size:	50 µg
Concentration:	1 mg/ml

Immunohistochemistry Image:



Anti-TRPV4 antibody LS-A8583 IHC of human pancreas, islet. Immunohistochemistry of formalin-fixed, paraffin-embedded tissue after heat-induced antigen retrieval.

Requested From:

Japan

Laboratory Reagent For In Vitro Research Use Only

Not for resale without prior written consent from LifeSpan BioSciences, Inc.

Created on 9/23/2014

© 2014 LifeSpan BioSciences